



LOCATION.
commercial real estate

SITE

Fairgrounds Rd

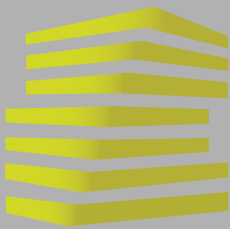
ROSS COUNTY FAIRGROUNDS

11,395 (2024)

22,461 (2024)

CHILlicothe, OH

NE CORNER
HIGHWAY 104 AND
FAIRGROUNDS RD
ACREAGE AVAILABLE



NEC HWY 104 & FAIRGROUNDS RD

AREA INFORMATION

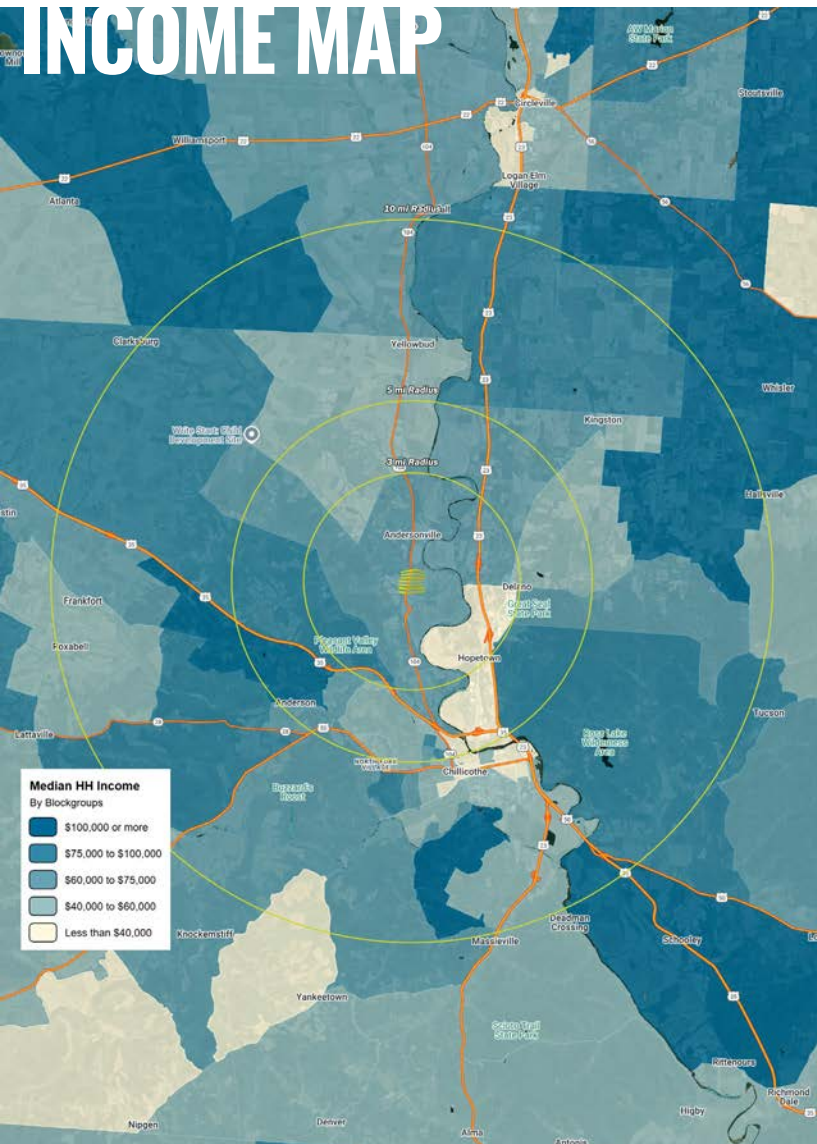
TONY CAROSELLO

314.818.1550 (OFFICE)
330.732.7250 (MOBILE)
anthony@LocationCRE.com

IAN SILBERMAN

314.818.1560 (OFFICE)
314.409.9904 (MOBILE)
ian@LocationCRE.com

INCOME MAP



TRADE AREA OVERVIEW

CHILLICOTHE, OHIO, IS A HISTORIC CITY NESTLED ALONG THE SCIOTO RIVER IN ROSS COUNTY, APPROXIMATELY 45 MILES SOUTH OF COLUMBUS. AS OHIO'S FIRST CAPITAL, CHILLICOTHE IS RICH IN HISTORY AND KNOWN FOR ITS VIBRANT DOWNTOWN, SCENIC PARKS, AND CULTURAL ATTRACTIONS. THE CITY IS HOME TO HOPEWELL CULTURE NATIONAL HISTORICAL PARK, PRESERVING ANCIENT NATIVE AMERICAN EARTHWORKS THAT ARE NOW A UNESCO WORLD HERITAGE SITE. RESIDENTS ENJOY A BLEND OF SMALL-TOWN CHARM AND MODERN AMENITIES, WITH A GROWING ARTS SCENE, LOCAL SHOPS, AND COMMUNITY EVENTS LIKE THE ANNUAL FEAST OF THE FLOWERING MOON FESTIVAL. WITH EASY ACCESS TO MAJOR HIGHWAYS, CHILLICOTHE SERVES AS A REGIONAL HUB FOR BUSINESS, HEALTHCARE, AND OUTDOOR RECREATION.

CHILLICOTHE HAS EXPERIENCED STEADY ECONOMIC GROWTH, DRIVEN BY A DIVERSE MIX OF INDUSTRIES, INCLUDING MANUFACTURING, HEALTHCARE, AND LOGISTICS. THE CITY IS HOME TO MAJOR EMPLOYERS LIKE THE KENWORTH TRUCK COMPANY, WHICH OPERATES ONE OF THE LARGEST ASSEMBLY PLANTS IN THE REGION, AS WELL AS ADENA HEALTH SYSTEM, A KEY PROVIDER OF MEDICAL SERVICES AND JOBS. IN RECENT YEARS, DOWNTOWN REVITALIZATION EFFORTS HAVE ATTRACTED NEW BUSINESSES, RESTAURANTS, AND RETAIL SPACES, ENHANCING THE LOCAL ECONOMY. INFRASTRUCTURE IMPROVEMENTS AND BUSINESS-FRIENDLY INITIATIVES CONTINUE TO SUPPORT JOB CREATION AND INVESTMENT, MAKING CHILLICOTHE AN ATTRACTIVE DESTINATION FOR BOTH ENTREPRENEURS AND ESTABLISHED COMPANIES LOOKING TO EXPAND IN SOUTHERN OHIO.

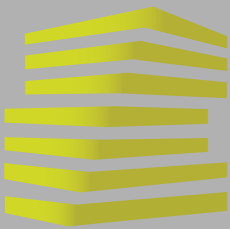
DEMOGRAPHICS

	3 mile	5 mile	10 mile
POPULATION	7,899	22,423	54,455
HOUSEHOLDS	1,638	7,843	21,167
EMPLOYEES	5,826	12,555	22,974
MED HH INCOME	\$65,925	\$65,339	\$63,234

AREA RETAIL | RESTAURANTS

Exxon Walmart * KOHL'S





NEC HWY 104 & FAIRGROUNDS RD

SITE PLAN & DETAILS

TONY CAROSELLO

314.818.1550 (OFFICE)
330.732.7250 (MOBILE)
anthony@LocationCRE.com

IAN SILBERMAN

314.818.1560 (OFFICE)
314.409.9904 (MOBILE)
ian@LocationCRE.com



- **PRIME LOCATION SITUATED ON THE NORTHEAST CORNER OF HWY 104 AND FAIRGROUNDS RD, OFFERING HIGH VISIBILITY AND ACCESSIBILITY.**
- **NEAR MAJOR ATTRACTION ADJACENT TO THE ROSS COUNTY FAIRGROUNDS, THE 5TH LARGEST IN OHIO, WHICH DRAWS OVER 100,000 VISITORS ANNUALLY.**
- **EXCELLENT CONNECTIVITY WITH CLOSE PROXIMITY TO US-23, A MAJOR NORTH-SOUTH CORRIDOR PROVIDING EASY ACCESS TO COLUMBUS AND SURROUNDING AREAS.**
- **DEVELOPMENT POTENTIAL IDEAL FOR COMMERCIAL, RETAIL, OR MIXED-USE DEVELOPMENT WITH STEADY TRAFFIC FROM FAIRGROUNDS EVENTS AND HIGHWAY COMMUTERS.**
- **GROWING ECONOMY IN CHILLICOTHE WITH STRONG MANUFACTURING, HEALTHCARE, AND RETAIL SECTORS, INCREASING DEMAND FOR BUSINESSES AND SERVICES.**
- **PLEASE CONTACT BROKER FOR PRICING AND ADDITIONAL INFORMATION.**

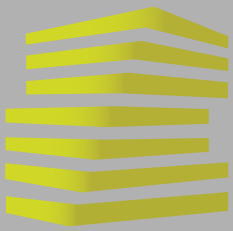


LOCATION.
commercial real estate



www.LocationCRE.com

THE INFORMATION IN THIS FLYER HAS BEEN OBTAINED FROM SOURCES BELIEVED RELIABLE. WHILE WE DO NOT DOUBT ITS ACCURACY, WE HAVE NOT VERIFIED IT AND MAKE NO GUARANTEE ABOUT IT. IT IS YOUR RESPONSIBILITY TO INDEPENDENTLY CONFIRM ITS ACCURACY AND COMPLETENESS. ANY PROJECTIONS, OPINIONS, ASSUMPTIONS OR ESTIMATES USED ARE FOR EXAMPLE ONLY AND DO NOT REPRESENT THE CURRENT OR FUTURE PERFORMANCE OF THE PROPERTY. THE VALUE OF THIS TRANSACTION TO YOU DEPENDS ON TAX AND OTHER FACTORS WHICH SHOULD BE EVALUATED BY YOUR TAX, FINANCIAL AND LEGAL ADVISORS. YOU AND YOUR ADVISORS SHOULD CONDUCT A CAREFUL, INDEPENDENT INVESTIGATION OF THE PROPERTY TO DETERMINE TO YOUR SATISFACTION THE SUITABILITY OF THE PROPERTY FOR YOUR NEEDS.



NEC HWY 104 & FAIRGROUNDS RD

MARKET AERIAL

TONY CAROSELLO

314.818.1550 (OFFICE)
330.732.7250 (MOBILE)
anthony@LocationCRE.com

IAN SILBERMAN

314.818.1560 (OFFICE)
314.409.9904 (MOBILE)
ian@LocationCRE.com



LOCATION.
commercial real estate



LOCATION.
commercial real estate

f i in REALTY RESOURCES MEMBER

www.LocationCRE.com

THE INFORMATION IN THIS FLYER HAS BEEN OBTAINED FROM SOURCES BELIEVED RELIABLE. WHILE WE DO NOT DOUBT ITS ACCURACY, WE HAVE NOT VERIFIED IT AND MAKE NO GUARANTEE ABOUT IT. IT IS YOUR RESPONSIBILITY TO INDEPENDENTLY CONFIRM ITS ACCURACY AND COMPLETENESS. ANY PROJECTIONS, OPINIONS, ASSUMPTIONS OR ESTIMATES USED ARE FOR EXAMPLE ONLY AND DO NOT REPRESENT THE CURRENT OR FUTURE PERFORMANCE OF THE PROPERTY. THE VALUE OF THIS TRANSACTION TO YOU DEPENDS ON TAX AND OTHER FACTORS WHICH SHOULD BE EVALUATED BY YOUR TAX, FINANCIAL AND LEGAL ADVISORS. YOU AND YOUR ADVISORS SHOULD CONDUCT A CAREFUL, INDEPENDENT INVESTIGATION OF THE PROPERTY TO DETERMINE TO YOUR SATISFACTION THE SUITABILITY OF THE PROPERTY FOR YOUR NEEDS.