



**LOCATION.**  
commercial real estate



NORTH POINT  
HIGH SCHOOL

NORTH POINT  
MIDDLE  
SCHOOL

Wentzville  
Rec Center

**MENARDS**  
PROPOSED

**goodwill**  
PROPOSED

**61**

Marion Rd

9,893 (2024)

**A**

ETRAILER CORP  
326 EMPLOYEES

**GM PLANT**  
4,000 EMPLOYEES  
(2023)

North Point Prairie Rd

**FAMOUS**  
footwear  
**Walmart**  
**Burlington**  
PROPOSED  
**DAISO**  
PROPOSED

**Target**

**LOWE'S**

**sam's club**

**ROSS**  
DRESS FOR LESS  
**ULTA**  
**KOHL'S**  
**HomeGoods**  
**FIVE BELOW**

23,171 (2024)

**Dierbergs**  
**PETSMART**  
**Michaels**  
**DICK'S**  
SPORTING GOODS

**Schnucks**

**save**  
**LOT**

60,563 (2024)

Pearce Blvd

**70**

PROPOSED  
483,000 SF  
75-BED MERCY  
HOSPITAL

65,819 (2024)

**ALDI**

**HARBOR**  
FREIGHT

**RURAL KING**  
FURNITURE & HOME STORE

**planet fitness**

**B&B THEATRES**

80,456 (2024)

16,755 (2024)

**Z**

13,017 (2024)

David Hoekel Pkwy

**SITE**

**1023 SOUTH POINTE  
PRAIRIE RD**

I-70 & DAVID HOEKEL PKWY

**WENTZVILLE, MO**





# 1023 SOUTH POINTE PRAIRIE ROAD

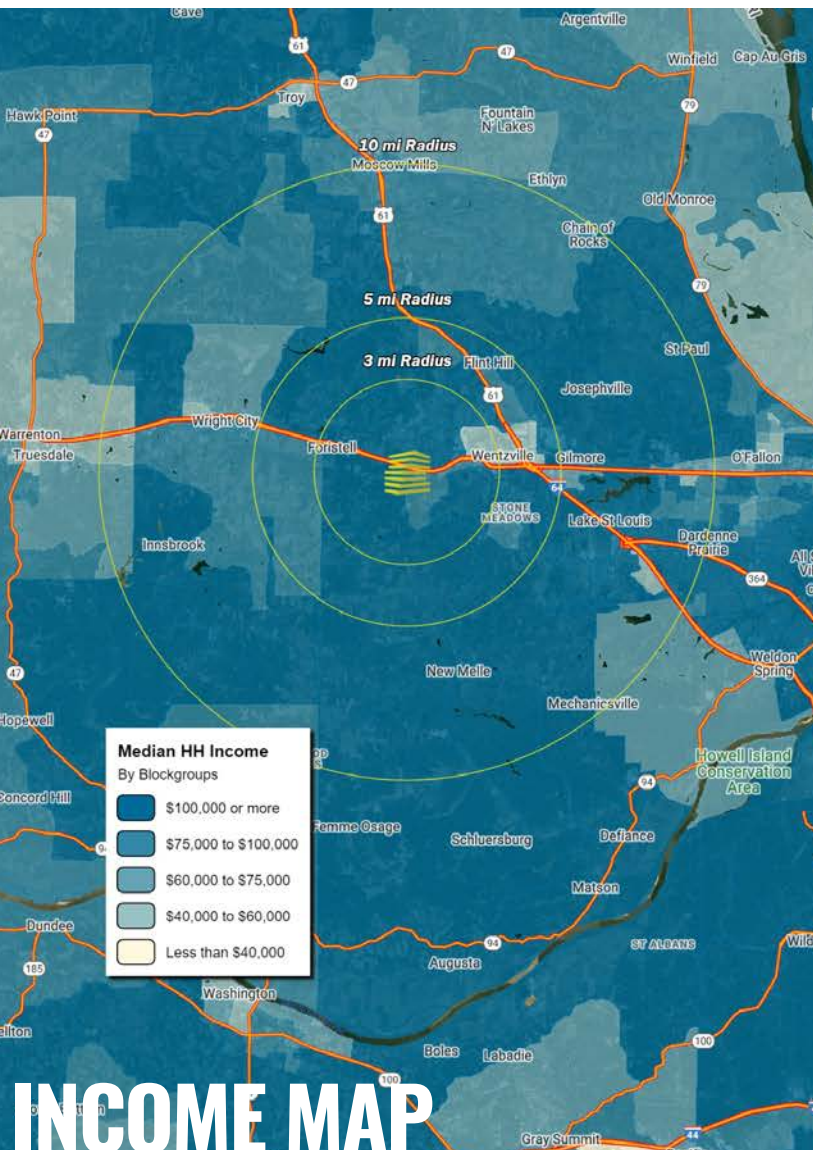
## NEIGHBORHOOD VIBE

MIKE PETTIT

314.818.1550 (OFFICE)

636.288.5412 (MOBILE)

Mike@LocationCRE.com



### TRADE AREA OVERVIEW

Situated at the intersection of I-70 and I-64/MO-61, Wentzville is a western St. Louis suburb and is known as the "Crossroads of the Nation." As the home of the county fairgrounds, Wentzville hosts the annual St. Charles County Fair, the St. Louis Renaissance Faire, and Wentzville Days Fair and Music Festival.

The city's largest employer is General Motors which operates an assembly plant employing 4,561 workers building both full-size vans and mid-size pick up trucks. General Motors officials are planning a \$1 billion expansion project at the company's Wentzville assembly plant. Other major employers include the Wentzville R-IV School District, Etrailer Corp. and SSM St. Joseph Health Center. Wentzville is home to Missouri's fastest growing School District, averaging well over 500 new students each year. The district currently has over 16,000 students, K-12 with 12 elementary schools, 3 middle schools, and 3 high schools.

Wentzville has and continues to embrace growth, with substantial investment in public infrastructure, including roads, utilities and parks, which has spawned and supported consistent and significant residential and commercial growth. Examples of the growth and strength of this community are the newly completed, state of the art City Hall, Law Enforcement Center, and REC center, located immediately adjacent to the mixed-use project, which were completed by the City without incurring any debt.

### DEMOGRAPHICS

	3 mile	5 miles	10 miles
<b>POPULATION</b>	<b>23,154</b>	<b>52,243</b>	<b>145,304</b>
<b>HOUSEHOLDS</b>	<b>8,207</b>	<b>18,499</b>	<b>53,574</b>
<b>EMPLOYEES</b>	<b>5,981</b>	<b>13,632</b>	<b>36,654</b>
<b>MED HH INCOME</b>	<b>\$116,142</b>	<b>\$109,351</b>	<b>\$114,024</b>

### AREA RETAIL | RESTAURANTS

**KOHL'S**

**HOBBY LOBBY**



**TARGET**



**sam's club.**



**ALDI**

**five BELOW**



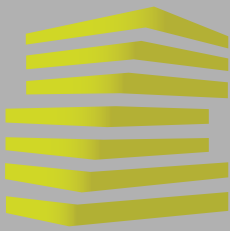
**planet fitness**



**REALTY RESOURCES**  
MEMBER

[www.LocationCRE.com](http://www.LocationCRE.com)

THE INFORMATION IN THIS FLYER HAS BEEN OBTAINED FROM SOURCES BELIEVED RELIABLE. WHILE WE DO NOT DOUBT ITS ACCURACY, WE HAVE NOT VERIFIED IT AND MAKE NO GUARANTEE ABOUT IT. IT IS YOUR RESPONSIBILITY TO INDEPENDENTLY CONFIRM ITS ACCURACY AND COMPLETENESS. ANY PROJECTIONS, OPINIONS, ASSUMPTIONS OR ESTIMATES USED ARE FOR EXAMPLE ONLY AND DO NOT REPRESENT THE CURRENT OR FUTURE PERFORMANCE OF THE PROPERTY. THE VALUE OF THIS TRANSACTION TO YOU DEPENDS ON TAX AND OTHER FACTORS WHICH SHOULD BE EVALUATED BY YOUR TAX, FINANCIAL AND LEGAL ADVISORS. YOU AND YOUR ADVISORS SHOULD CONDUCT A CAREFUL, INDEPENDENT INVESTIGATION OF THE PROPERTY TO DETERMINE TO YOUR SATISFACTION THE SUITABILITY OF THE PROPERTY FOR YOUR NEEDS.



# 1023 SOUTH POINTE PRAIRIE ROAD

## SURVEY + DETAILS

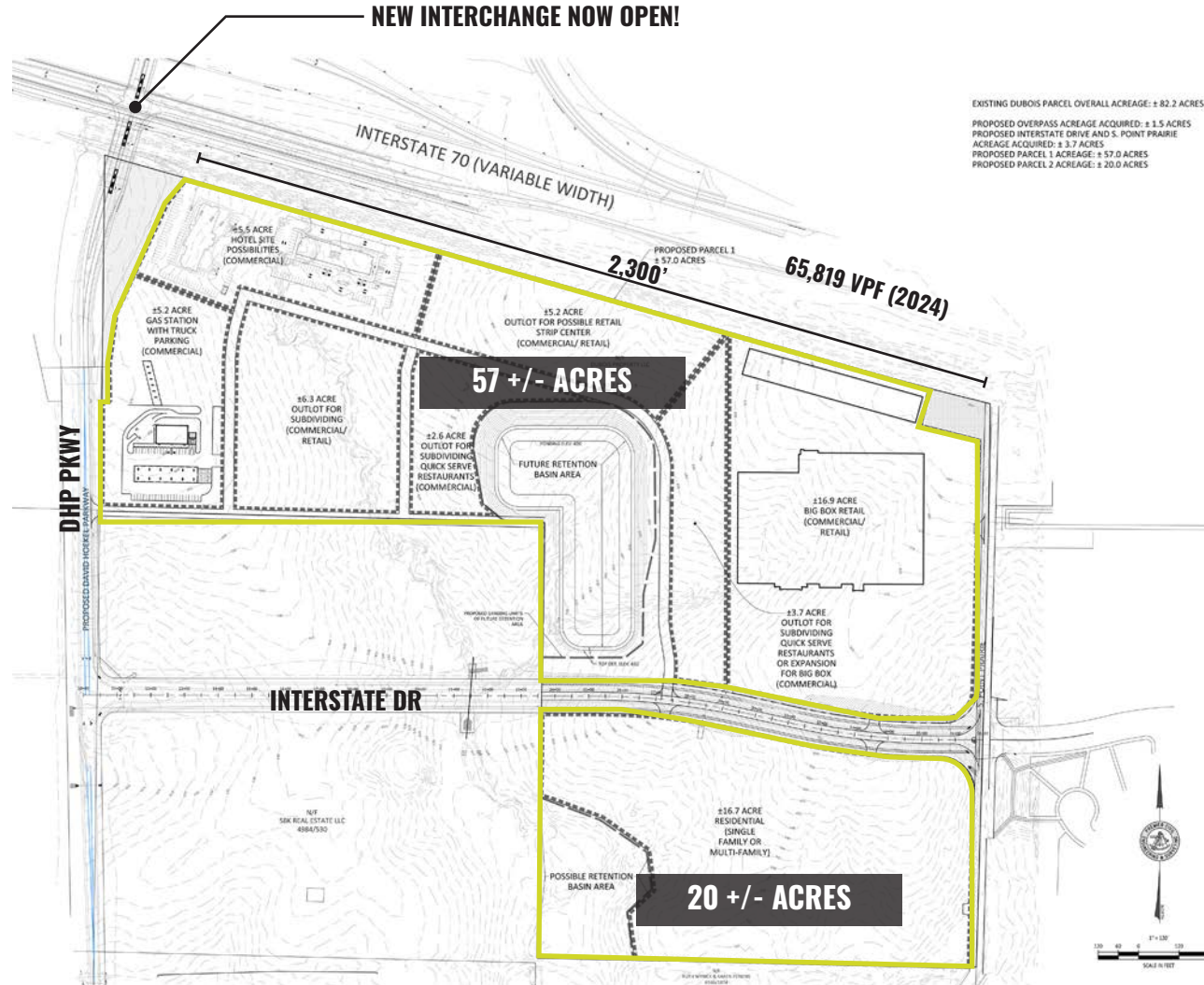
MIKE PETTIT

314.818.1550 (OFFICE)

636.288.5412 (MOBILE)

Mike@LocationCRE.com

**NEW INTERCHANGE NOW OPEN!**



- 82.21 ACRES FOR SALE (DIVISIBLE)
- NEW I-70 AND DAVID HOEKEL PARKWAY INTERCHANGE NOW OPEN
- AREA IDENTIFIED AS COMMERCIAL IN A CITY'S FUTURE LAND USE PLAN
- EXCELLENT VISIBILITY TO 61,336 VPD WITH OVER 2,300 SF OF FRONTAGE ON I-70
- FULL ACCESS TO DAVID HOEKEL PARKWAY AND INTERSTATE DRIVE
- CURRENTLY LOCATED IN UNINCORPORATED ST. CHARLES COUNTY

**NEW INTERCHANGE NOW OPEN!**



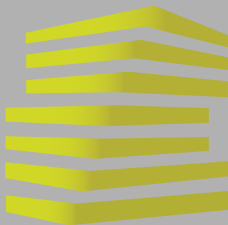
**LOCATION.**  
commercial real estate

f @ in REALTY RESOURCES MEMBER

www.LocationCRE.com

THE INFORMATION IN THIS FLYER HAS BEEN OBTAINED FROM SOURCES BELIEVED RELIABLE. WHILE WE DO NOT DOUBT ITS ACCURACY, WE HAVE NOT VERIFIED IT AND MAKE NO GUARANTEE ABOUT IT. IT IS YOUR RESPONSIBILITY TO INDEPENDENTLY CONFIRM ITS ACCURACY AND COMPLETENESS. ANY PROJECTIONS, OPINIONS, ASSUMPTIONS OR ESTIMATES USED ARE FOR EXAMPLE ONLY AND DO NOT REPRESENT THE CURRENT OR FUTURE PERFORMANCE OF THE PROPERTY. THE VALUE OF THIS TRANSACTION TO YOU DEPENDS ON TAX AND OTHER FACTORS WHICH SHOULD BE EVALUATED BY YOUR TAX, FINANCIAL AND LEGAL ADVISORS. YOU AND YOUR ADVISORS SHOULD CONDUCT A CAREFUL, INDEPENDENT INVESTIGATION OF THE PROPERTY TO DETERMINE TO YOUR SATISFACTION THE SUITABILITY OF THE PROPERTY FOR YOUR NEEDS.





# 1023 SOUTH POINTE PRAIRIE ROAD

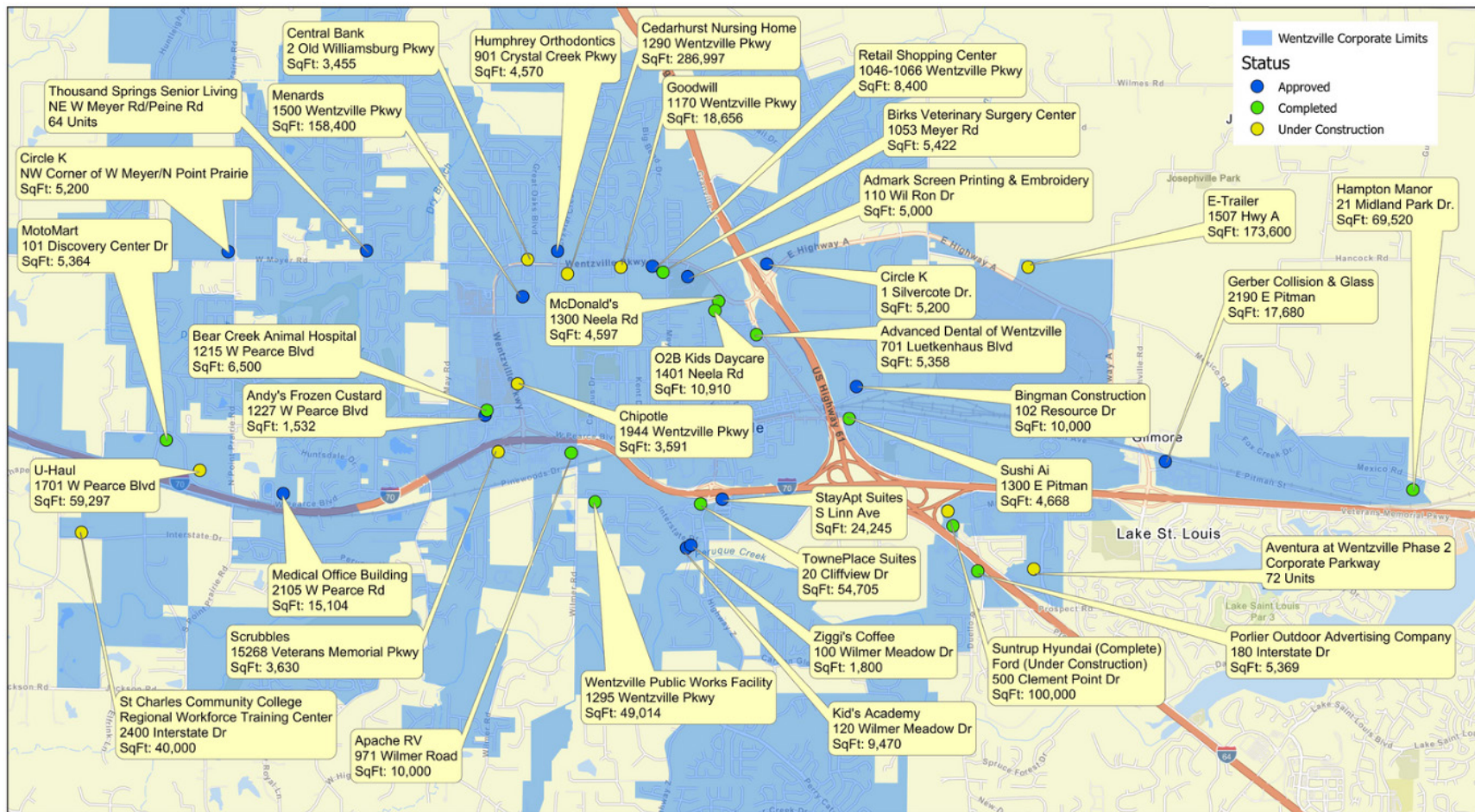
## ECONOMIC DEVELOPMENT

MIKE PETTIT

314.818.1550 (OFFICE)

636.288.5412 (MOBILE)

Mike@LocationCRE.com



Wentzville Missouri

City of Wentzville  
Community Development Department  
Planning & Zoning Division  
Geographic Information Systems

Economic Development Activity  
In Progress



September 2024



LOCATION.  
commercial real estate

f @ in REALTY RESOURCES MEMBER

www.LocationCRE.com

THE INFORMATION IN THIS FLYER HAS BEEN OBTAINED FROM SOURCES BELIEVED RELIABLE. WHILE WE DO NOT DOUBT ITS ACCURACY, WE HAVE NOT VERIFIED IT AND MAKE NO GUARANTEE ABOUT IT. IT IS YOUR RESPONSIBILITY TO INDEPENDENTLY CONFIRM ITS ACCURACY AND COMPLETENESS. ANY PROJECTIONS, OPINIONS, ASSUMPTIONS OR ESTIMATES USED ARE FOR EXAMPLE ONLY AND DO NOT REPRESENT THE CURRENT OR FUTURE PERFORMANCE OF THE PROPERTY. THE VALUE OF THIS TRANSACTION TO YOU DEPENDS ON TAX AND OTHER FACTORS WHICH SHOULD BE EVALUATED BY YOUR TAX, FINANCIAL AND LEGAL ADVISORS. YOU AND YOUR ADVISORS SHOULD CONDUCT A CAREFUL, INDEPENDENT INVESTIGATION OF THE PROPERTY TO DETERMINE TO YOUR SATISFACTION THE SUITABILITY OF THE PROPERTY FOR YOUR NEEDS.





# 1023 SOUTH POINTE PRAIRIE ROAD

## ZOOM AERIAL

MIKE PETTIT

314.818.1550 (OFFICE)

636.288.5412 (MOBILE)

Mike@LocationCRE.com



NEW I-70 INTERCHANGE  
NOW OPEN!

David Hecker Pkwy



SITE

65,819 (2024)

Interstate Dr



**LOCATION.**  
commercial real estate



REALTY  
RESOURCES  
MEMBER

[www.LocationCRE.com](http://www.LocationCRE.com)

THE INFORMATION IN THIS FLYER HAS BEEN OBTAINED FROM SOURCES BELIEVED RELIABLE. WHILE WE DO NOT DOUBT ITS ACCURACY, WE HAVE NOT VERIFIED IT AND MAKE NO GUARANTEE ABOUT IT. IT IS YOUR RESPONSIBILITY TO INDEPENDENTLY CONFIRM ITS ACCURACY AND COMPLETENESS. ANY PROJECTIONS, OPINIONS, ASSUMPTIONS OR ESTIMATES USED ARE FOR EXAMPLE ONLY AND DO NOT REPRESENT THE CURRENT OR FUTURE PERFORMANCE OF THE PROPERTY. THE VALUE OF THIS TRANSACTION TO YOU DEPENDS ON TAX AND OTHER FACTORS WHICH SHOULD BE EVALUATED BY YOUR TAX, FINANCIAL AND LEGAL ADVISORS. YOU AND YOUR ADVISORS SHOULD CONDUCT A CAREFUL, INDEPENDENT INVESTIGATION OF THE PROPERTY TO DETERMINE TO YOUR SATISFACTION THE SUITABILITY OF THE PROPERTY FOR YOUR NEEDS.