



LOCATION.
commercial real estate



5353 S. LINDBERGH BLVD.

SECOND FLOOR OFFICE SPACE AVAILABLE AT THE HARD CORNER
OF LINDBERGH BLVD. & BAPTIST CHURCH RD. IN THE
HEART OF SOUTH ST. LOUIS COUNTY.

5353 S. LINDBERGH BLVD.

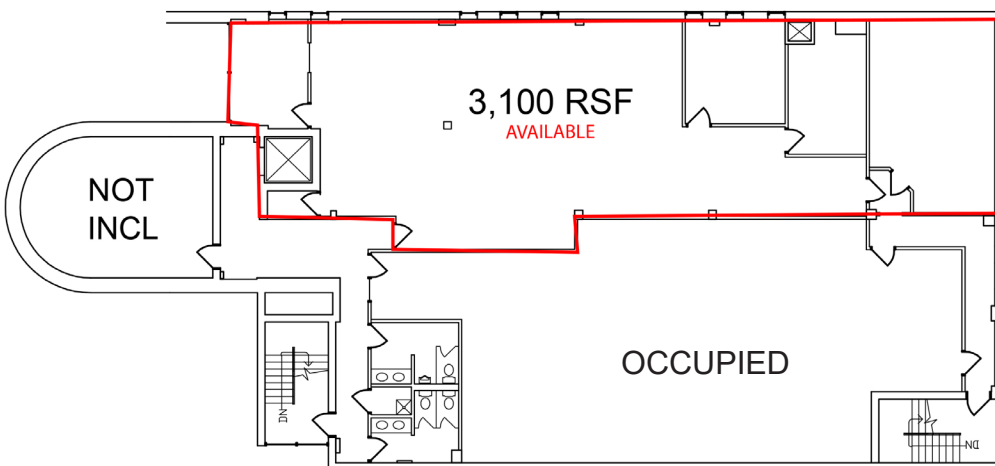
PROPERTY DETAILS

BRIAN DEUTSCH

314.818.1561 (DIRECT)

314.805.6150 (MOBILE)

Brian@LocationCRE.com



- LOCATED AT THE HARD CORNER OF SOUTH LINDBERGH BLVD. & BAPTIST CHURCH RD.
- PERFECT SPACE FOR INSURANCE AGENCY, TITLE COMPANY, LAW FIRM, MEDICAL OFFICE, ETC.
- PROFESSIONAL TENANTS IN BUILDING (BANK OF AMERICA & CPA)
- SECOND FLOOR OFFICE SPACE AVAILABLE
- AGGRESSIVE RENTAL RATES
- PROFESSIONALLY MANAGED
- AMPLE PARKING
- EXTREMELY CONVENIENT LOCATION WITH NUMEROUS BUSINESSES/AMENITIES NEARBY