

A VIBRANT LIVE|SHOP|WORK|PLAY DESTINATION ON 26 ACRES IN THE HEART OF ST. CHARLES



**LOCATION.**  
commercial real estate



**STREETS**  
ST.CHARLES



# STREETS OF ST. CHARLES

## ABOUT THE CENTER



1,063 - 9,000 SF AVAILABLE AT STREETS OF ST. CHARLES: A DIVERSE AND ENERGETIC MIXED-USE ENVIRONMENT WHERE PEOPLE CAN LIVE, WORK, SHOP, DINE AND PLAY. WITH BUSTLING ACTIVITY, ACTIVE NIGHTLIFE AND A DYNAMIC TENANT MIX, THE DEVELOPMENT INCLUDES OVER ONE MILLION SQUARE FEET OF SPACE IN A CONVENIENT AND DISTINCTIVE ENVIRONMENT UNLIKE ANYTHING IN THE GREATER ST. LOUIS MSA.

THE PROPERTY WAS ONCE HOME TO NOAH'S ARK RESTAURANT AND HOTEL. OPENING IN 1968, FAMILIES THROUGHOUT THE ST. LOUIS AREA FREQUENTED THE RESTAURANT THAT HAD LIFE SIZED ANIMAL SCULPTURES TO CELEBRATE SPECIAL OCCASIONS.

STREETS OF ST. CHARLES BOASTS NATIONAL TENANT NAMES SUCH AS AMC THEATRES, BAR LOUIE, FIRST WATCH, AND P.F. CHANG'S AMONG OTHERS. STREETS OF ST. CHARLES IS ALSO HOME TO THE AREA'S FIRST TRU BY HILTON HOTEL, TUCANOS BRAZILIAN GRILL, FIREBIRDS WOOD FIRED GRILL, AND PRASINO - ALL OF WHICH CHOSE STREETS OF ST. CHARLES FOR THEIR FIRST LOCATIONS IN MISSOURI.

TWO HOTELS ARE LOCATED AT THE DEVELOPMENT, INCLUDING DRURY PLAZA HOTEL AND TRU BY HILTON HOTEL, CATERING TO A MILLENNIAL AND CROSS-GENERATIONAL AUDIENCE. THE RESIDENCES OFFERS PREMIER LUXURY APARTMENT LIVING AT THE 309-UNIT COMPLEX LOCATED ABOVE STREET LEVEL RETAIL.

COMPLEMENTING THE FANTASTIC MIX OF TENANTS ARE YEAR-ROUND EVENTS TO ACTIVATE THE PROPERTY BY DRAWING CROWDS TO THE CENTER THROUGHOUT THE YEAR.

THE ST. CHARLES TROLLEY CONNECTS STREETS OF ST. CHARLES TO HISTORIC MAIN STREET AND THE CONVENTION CENTER, AS WELL AS SEVERAL OTHER HOTEL AND TOURIST STOPS THROUGHOUT THE CITY TO FACILITATE GETTING VISITORS TO AND FROM THE CENTER.



Google Maps



# STREETS OF ST. CHARLES

## NEIGHBORHOOD VIBE



	1 mile	3 miles	5 miles
<b>POPULATION</b>	<b>9,171</b>	<b>53,615</b>	<b>145,357</b>
<b>HOUSEHOLDS</b>	<b>4,331</b>	<b>23,458</b>	<b>62,792</b>
<b>EMPLOYEES</b>	<b>5,687</b>	<b>45,038</b>	<b>89,081</b>
<b>MED HH INCOME</b>	<b>\$77,617</b>	<b>\$86,356</b>	<b>\$96,840</b>

St. Charles is a historic city located in St. Charles County, MO, approximately 22 miles northwest of downtown St. Louis. The city has a rich history dating back to the early 1800s when it was established as the first state capital of Missouri. Today, it is a vibrant community with a mix of historic and modern elements. The city is known for its charming Main Street, which is lined with unique shops, restaurants, and historic landmarks. The Riverfront and Main Street area are central gathering places and focal points for the community.

St. Charles is home to several major employers, including Ameristar Casino Resort Spa St. Charles, which is one of the largest casinos in the region, in addition to St. Charles County Government, Francis Howell School District, Boeing's St. Charles-based division, Coca Cola Enterprises, and Sysco. In recent years, the city has witnessed over \$560 million of new development.

St. Charles is also known for its many festivals and events, including the annual St. Charles Riverfest. Other popular events include the Festival of the Little Hills, which celebrates the city's historic district, and the Christmas Traditions festival.

Serving the public for nearly 200 years, Lindenwood University is a private, coeducational liberal arts university on a 500-acre campus situated in the heart of St. Charles. Lindenwood University is known nationally and internationally for innovation and entrepreneurship offering 120 undergraduate and graduate degree programs.



# STREETS OF ST. CHARLES

## AREA EATS + HOT SPOTS



**amc**  
THEATRES



*Buff City*  
*Soap*



**FIREBIRDS**  
WOOD FIRED GRILL



**FIVE GUYS**  
BURGERS and FRIES



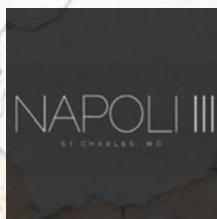
**LOADED**  
ELEVATED NACHOS

MASSAGE **LUXE**

**MILAN**  
Laser Hair Removal



**MOD**  
ON TREND



*Narwhal's*  
CRAFTED

*the only*  
**facial**  
beautiful skin made simple



**P.F. CHANG'S**

**prasin**



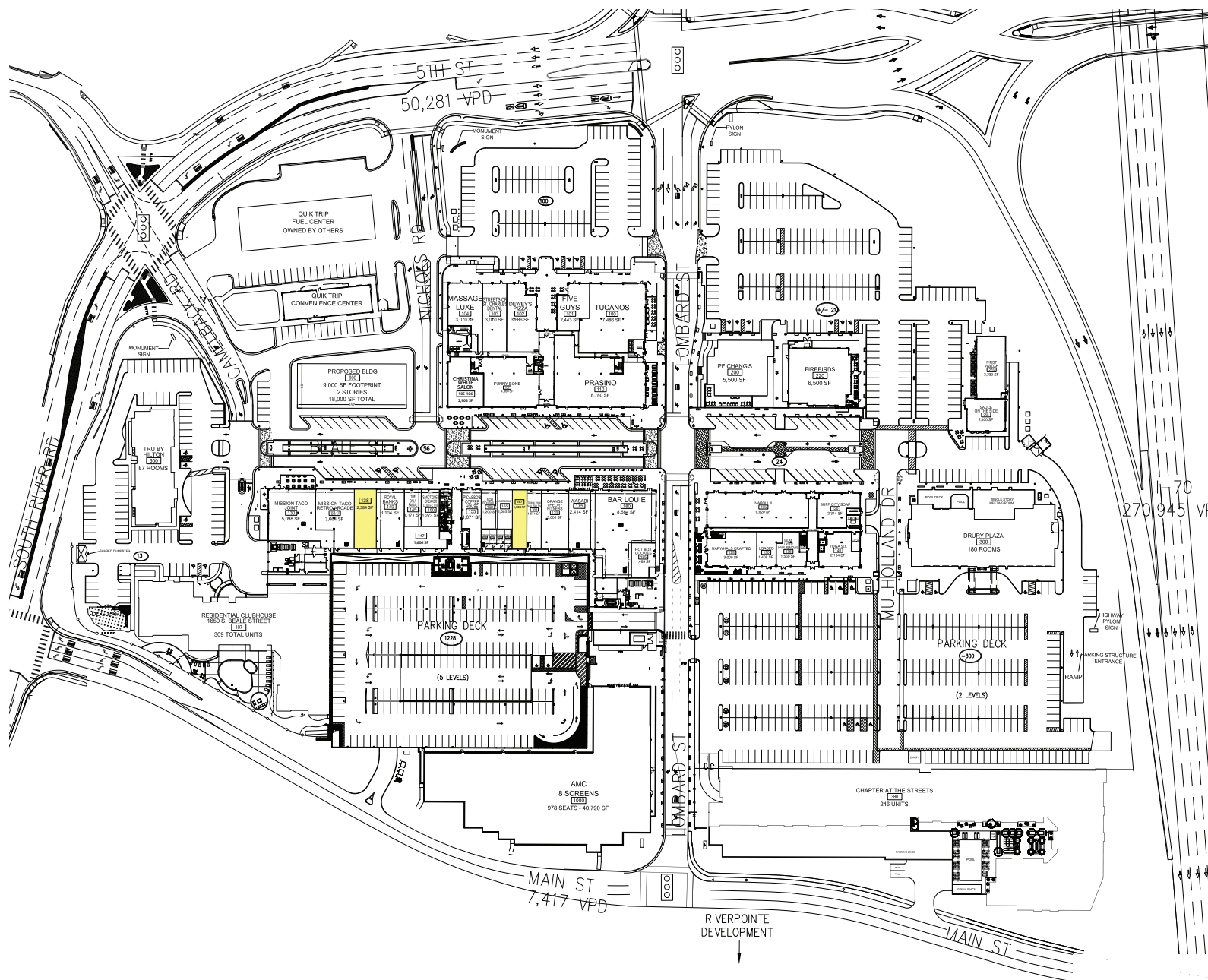
**THINK**  
**PINK**  
NAIL & SPA



**WASABI**  
SUSHI BAR



## SUITE 167 - 1,585 SF

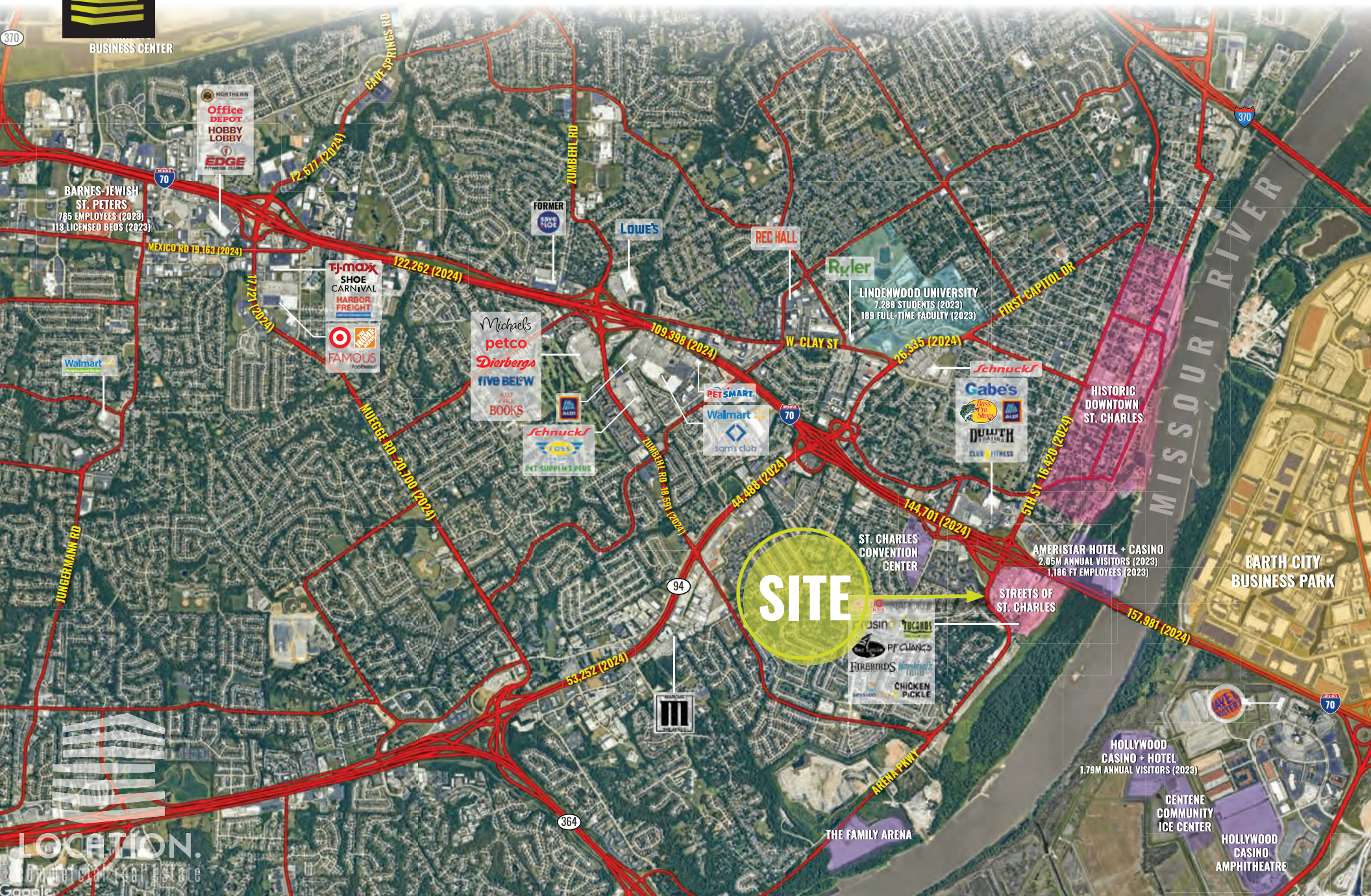


\* EXCLUSIVE REAL ESTATE AVAILABLE FOR LEASE.  
CURRENT TENANT IN SUITE 167 IS STILL OPERATING AND OPEN FOR BUSINESS; PLEASE DO NOT DISTURB TENANT.

# STREETS OF ST. CHARLES

## CENTER PHOTOS







# LOCATION.

commercial real estate

SCOTT BITNEY 314.276.4673 (mobile) Scott@LocationCRE.com  
ALEX APTER 314.488.5900 (mobile) Alex@LocationCRE.com

f i n REALTY RESOURCES MEMBER [www.LocationCRE.com](http://www.LocationCRE.com)

THE INFORMATION IN THIS FLYER HAS BEEN OBTAINED FROM SOURCES BELIEVED RELIABLE. WHILE WE DO NOT DOUBT ITS ACCURACY, WE HAVE NOT VERIFIED IT AND MAKE NO GUARANTEE ABOUT IT. IT IS YOUR RESPONSIBILITY TO INDEPENDENTLY CONFIRM ITS ACCURACY AND COMPLETENESS. ANY PROJECTIONS, OPINIONS, ASSUMPTIONS OR ESTIMATES USED ARE FOR EXAMPLE ONLY AND DO NOT REPRESENT THE CURRENT OR FUTURE PERFORMANCE OF THE PROPERTY. THE VALUE OF THIS TRANSACTION TO YOU DEPENDS ON TAX AND OTHER FACTORS WHICH SHOULD BE EVALUATED BY YOUR TAX, FINANCIAL AND LEGAL ADVISORS. YOU AND YOUR ADVISORS SHOULD CONDUCT A CAREFUL, INDEPENDENT INVESTIGATION OF THE PROPERTY TO DETERMINE TO YOUR SATISFACTION THE SUITABILITY OF THE PROPERTY FOR YOUR NEEDS.