



**LOCATION.**  
commercial real estate



# FORMER DAVID'S BRIDAL AT JAMES RIVER TOWN CENTER

3803 S. GLENSTONE AVE.

SPRINGFIELD, MO





# 3803 S. GLENSTONE AVE

## NEIGHBORHOOD VIBE

SCOTT BITNEY

314.818.1550 (OFFICE)

314.276.4673 (MOBILE)

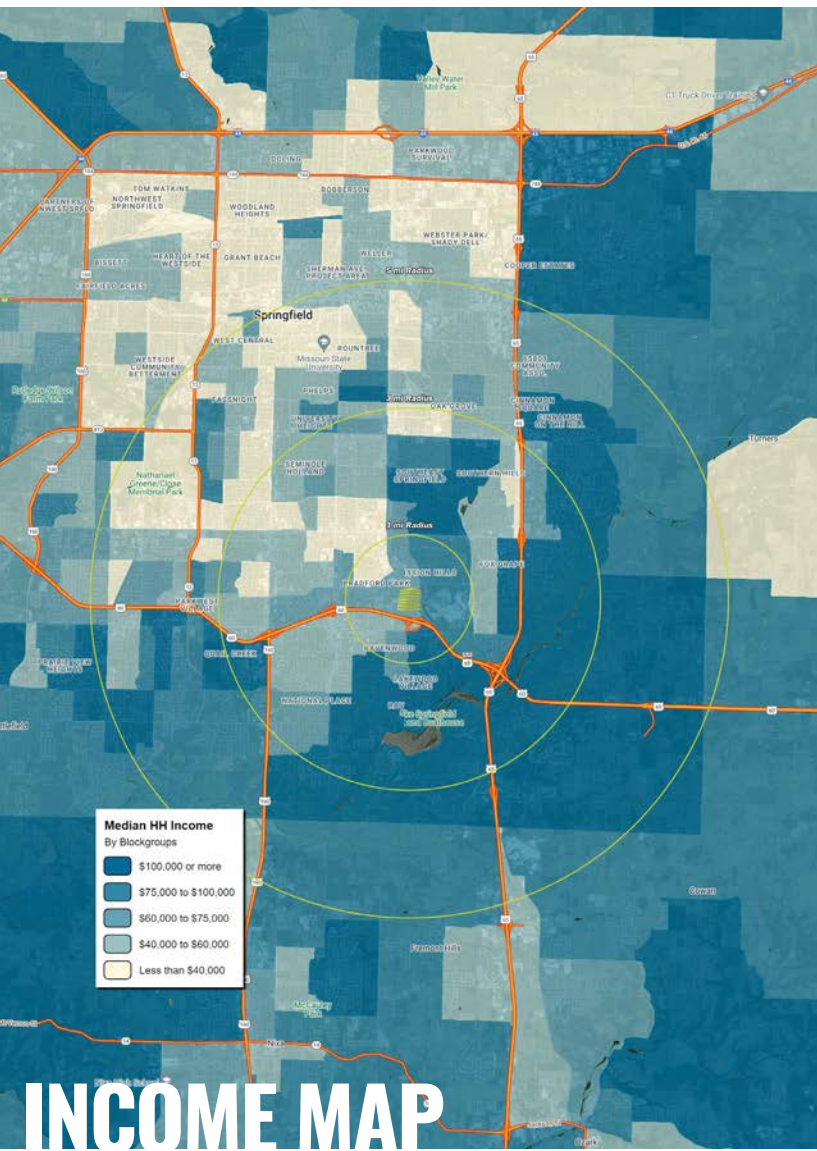
Scott@LocationCRE.com

BILL SIEMS

314.818.1566 (OFFICE)

314.363.8327 (MOBILE)

Bill@LocationCRE.com



### TRADE AREA OVERVIEW

With more than 440,000 people in the metro area, Springfield is where the rolling hills of the Ozarks plateau form a surprisingly modern and green city. A "big, small town," Springfield offers a great blend of fascinating attractions, historical treasures, sports excitement and cultural and leisure activities in a welcoming environment. The city has 102 parks, including a linear trail system that integrates with the city's growing on-street bike route system. It has its own airport, art museum and zoo. Local sports teams include the Springfield Cardinals minor-league baseball team. Springfield is home to Bass Pro Shops, Brown Derby Liquors, Missouri State University, Drury University and Evangel University. Notable residents have included Brad Pitt, Bob Barker, John Goodman, Payne Stewart, Kathleen Turner and Stan Musial.

Springfield/Greene County is the only municipality in the nation with a Gold Medal Award-winning parks and recreation department.

You could call Springfield a college town, but the truth is education is the cornerstone of the community at all levels. More than 24,000 students attend the Springfield R-12 School District, Missouri's largest fully accredited school system. Collegiately, Missouri State University and its more than 24,000 students call Springfield home, as do the students of Drury University, Ozarks Technical Community College and Evangel University.

Casual dining, upscale bars and restaurants, antique shops, trendy clothing, art galleries and a public art and sculpture tour make downtown Springfield a great place to live and visit.

### DEMOGRAPHICS

	1 mile	3 miles	5 miles
<b>POPULATION</b>	<b>5,904</b>	<b>55,924</b>	<b>141,165</b>
<b>HOUSEHOLDS</b>	<b>2,934</b>	<b>26,575</b>	<b>64,341</b>
<b>EMPLOYEES</b>	<b>5,316</b>	<b>39,397</b>	<b>76,638</b>
<b>MED HH INCOME</b>	<b>\$61,827</b>	<b>\$66,144</b>	<b>\$61,238</b>

### AREA RETAIL | RESTAURANTS

Walmart

DOLLAR TREE



KOHL'S

Michaels

LOWE'S

STAPLES

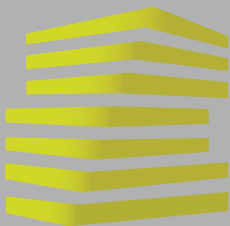
Freddy's  
STEAKBURGERS

Wendy's

Great Clips

slumberland  
FURNITURE





3803 S. GLENSTONE AVE

PHOTOS

SCOTT BITNEY

314.818.1550 (OFFICE)

314.276.4673 (MOBILE)

Scott@LocationCRE.com

BILL SIEMS

314.818.1566 (OFFICE)

314.363.8327 (MOBILE)

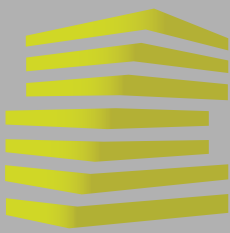
Bill@LocationCRE.com



[www.LocationCRE.com](http://www.LocationCRE.com)

THE INFORMATION IN THIS FLYER HAS BEEN OBTAINED FROM SOURCES BELIEVED RELIABLE. WHILE WE DO NOT DOUBT ITS ACCURACY, WE HAVE NOT VERIFIED IT AND MAKE NO GUARANTEE ABOUT IT. IT IS YOUR RESPONSIBILITY TO INDEPENDENTLY CONFIRM ITS ACCURACY AND COMPLETENESS. ANY PROJECTIONS, OPINIONS, ASSUMPTIONS OR ESTIMATES USED ARE FOR EXAMPLE ONLY AND DO NOT REPRESENT THE CURRENT OR FUTURE PERFORMANCE OF THE PROPERTY. THE VALUE OF THIS TRANSACTION TO YOU DEPENDS ON TAX AND OTHER FACTORS WHICH SHOULD BE EVALUATED BY YOUR TAX, FINANCIAL AND LEGAL ADVISORS. YOU AND YOUR ADVISORS SHOULD CONDUCT A CAREFUL, INDEPENDENT INVESTIGATION OF THE PROPERTY TO DETERMINE TO YOUR SATISFACTION THE SUITABILITY OF THE PROPERTY FOR YOUR NEEDS.





# 3803 S. GLENSTONE AVE

## ZOOM AERIAL + DETAILS

SCOTT BITNEY

314.818.1550 (OFFICE)

314.276.4673 (MOBILE)

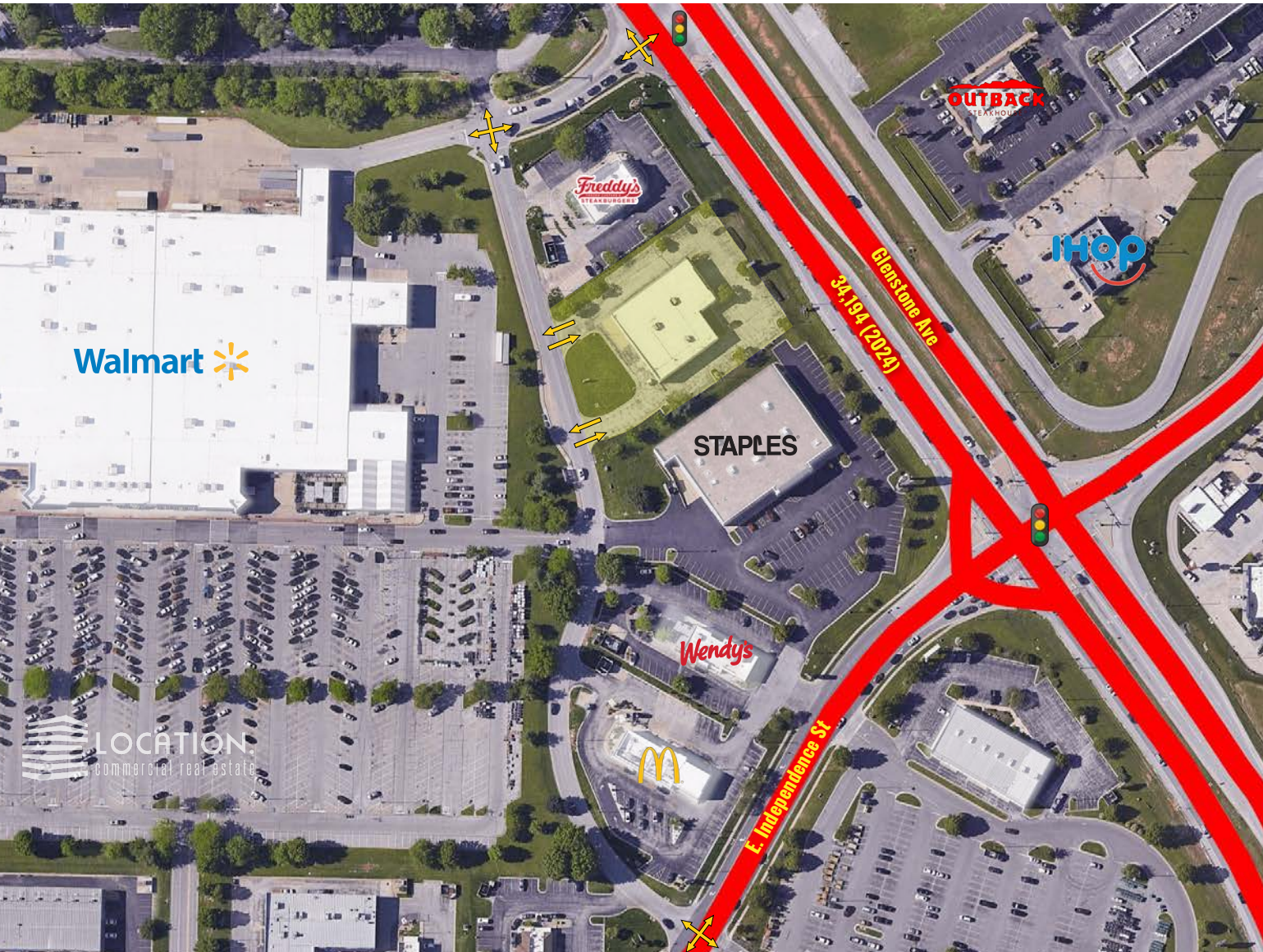
Scott@LocationCRE.com

BILL SIEMS

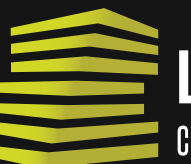
314.818.1566 (OFFICE)

314.363.8327 (MOBILE)

Bill@LocationCRE.com



- APPROXIMATELY 12,000 SF +/- ON 1.44 ACRES
- SHOPPING CENTER ANCHORS INCLUDE WALMART AND KOHLS
- PAD SITE COTENANTS INCLUDE FREDDY'S FROZEN CUSTARD, WENDY'S, MCDONALD'S, FAZOLI'S, BRICKTOWN BREWERY, AND COLTON'S STEAKHOUSE
- 50 DEDICATED PARKING SPACES
- POTENTIAL SINGLE TENANT OR MULTI-TENANT OPPORTUNITIES
- GREAT VISIBILITY AND ACCESS FROM GLENSTONE AVE WITH AVERAGE DAILY TRAFFIC COUNTS OF 26,033 VPD ON BATTLEFIELD RD AND 32,737 VPD ON GLENSTONE AVE (2022)
- CALL BROKER FOR MORE DETAILS



**LOCATION.**  
commercial real estate

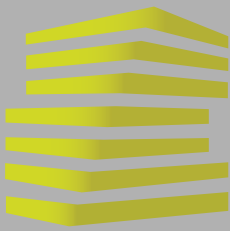


REALTY  
RESOURCES  
MEMBER

[www.LocationCRE.com](http://www.LocationCRE.com)

THE INFORMATION IN THIS FLYER HAS BEEN OBTAINED FROM SOURCES BELIEVED RELIABLE. WHILE WE DO NOT DOUBT ITS ACCURACY, WE HAVE NOT VERIFIED IT AND MAKE NO GUARANTEE ABOUT IT. IT IS YOUR RESPONSIBILITY TO INDEPENDENTLY CONFIRM ITS ACCURACY AND COMPLETENESS. ANY PROJECTIONS, OPINIONS, ASSUMPTIONS OR ESTIMATES USED ARE FOR EXAMPLE ONLY AND DO NOT REPRESENT THE CURRENT OR FUTURE PERFORMANCE OF THE PROPERTY. THE VALUE OF THIS TRANSACTION TO YOU DEPENDS ON TAX AND OTHER FACTORS WHICH SHOULD BE EVALUATED BY YOUR TAX, FINANCIAL AND LEGAL ADVISORS. YOU AND YOUR ADVISORS SHOULD CONDUCT A CAREFUL, INDEPENDENT INVESTIGATION OF THE PROPERTY TO DETERMINE TO YOUR SATISFACTION THE SUITABILITY OF THE PROPERTY FOR YOUR NEEDS.





# 3803 S. GLENSTONE AVE

## MARKET AERIAL

SCOTT BITNEY

314.818.1550 (OFFICE)

314.276.4673 (MOBILE)

Scott@LocationCRE.com

BILL SIEMS

314.818.1566 (OFFICE)

314.363.8327 (MOBILE)

Bill@LocationCRE.com



**LOCATION.**  
commercial real estate



[www.LocationCRE.com](http://www.LocationCRE.com)

THE INFORMATION IN THIS FLYER HAS BEEN OBTAINED FROM SOURCES BELIEVED RELIABLE. WHILE WE DO NOT DOUBT ITS ACCURACY, WE HAVE NOT VERIFIED IT AND MAKE NO GUARANTEE ABOUT IT. IT IS YOUR RESPONSIBILITY TO INDEPENDENTLY CONFIRM ITS ACCURACY AND COMPLETENESS. ANY PROJECTIONS, OPINIONS, ASSUMPTIONS OR ESTIMATES USED ARE FOR EXAMPLE ONLY AND DO NOT REPRESENT THE CURRENT OR FUTURE PERFORMANCE OF THE PROPERTY. THE VALUE OF THIS TRANSACTION TO YOU DEPENDS ON TAX AND OTHER FACTORS WHICH SHOULD BE EVALUATED BY YOUR TAX, FINANCIAL AND LEGAL ADVISORS. YOU AND YOUR ADVISORS SHOULD CONDUCT A CAREFUL, INDEPENDENT INVESTIGATION OF THE PROPERTY TO DETERMINE TO YOUR SATISFACTION THE SUITABILITY OF THE PROPERTY FOR YOUR NEEDS.