

# FORMER RESTAURANT FOR LEASE

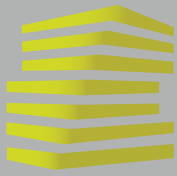
498 SE MO-291

LEE'S SUMMIT, MO



**LOCATION.**  
commercial real estate





# 498 SE MO-291

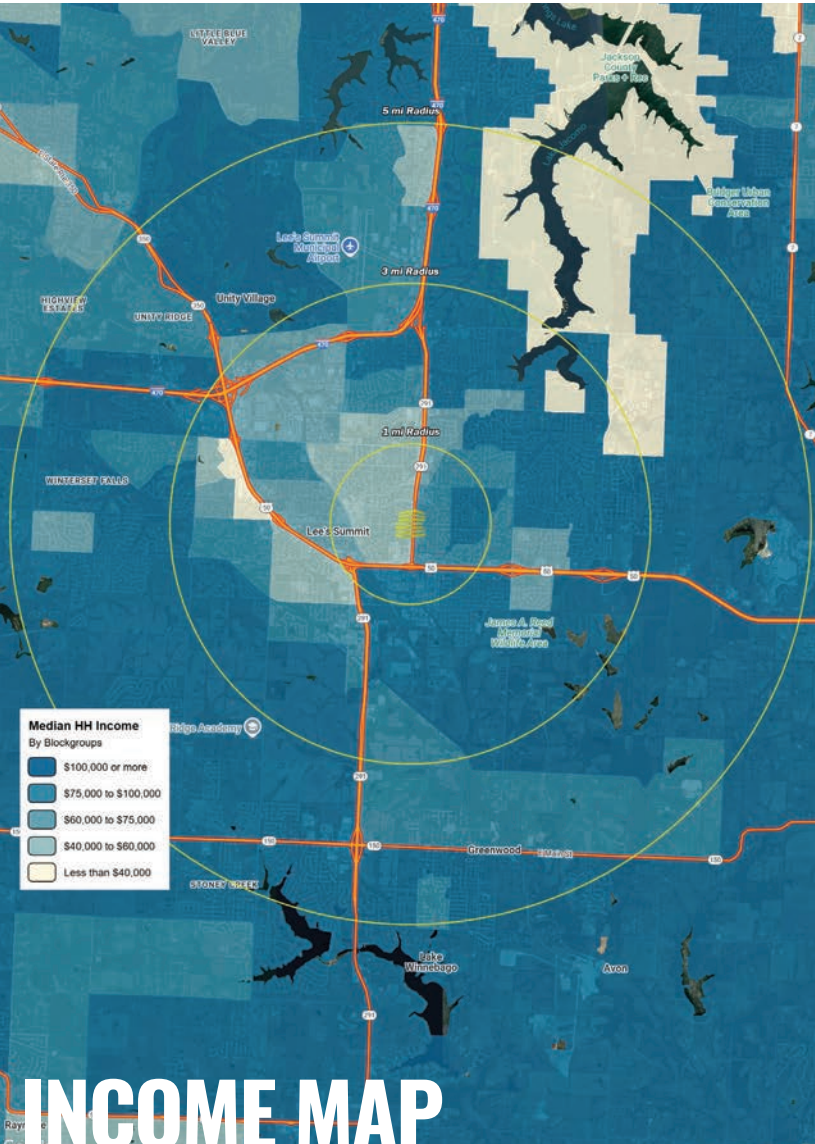
## NEIGHBORHOOD VIBE

MIKE PETTIT

314.818.1550 x108 (OFFICE)  
636.288.5412 (MOBILE)  
Mike@LocationCRE.com

KEVIN SHAPIRO

314.818.1550 x106 (OFFICE)  
314.283.4691 (MOBILE)  
Kevin@LocationCRE.com



## INCOME MAP

### TRADE AREA OVERVIEW

Lee's Summit is a thriving city located in Jackson County, about 20 miles southeast of downtown Kansas City. Founded in 1865 and named after early settler Dr. Pleasant Lea, Lee's Summit has grown into one of Missouri's largest suburbs. Known for its high quality of life, historic charm, and strong community values, the city continues to attract families and businesses seeking a well-rounded lifestyle.

Lee's Summit is home to several major employers, including the Lee's Summit R-7 School District, Saint Luke's East Hospital, and the City of Lee's Summit. Other key employers include GEHA (Government Employees Health Association), Unity Village, and the Summit Technology Academy, a regional leader in advanced education and training.

The city offers a wide range of recreational amenities, including Longview Lake, with 930 acres of water, trails, and open space, and Legacy Park, a 700-acre complex featuring sports facilities, an amphitheater, and community center. The walkable downtown Lee's Summit area adds to the city's charm with unique shops, restaurants, and local events.

Lee's Summit hosts a number of popular community events throughout the year, including Downtown Days, Oktoberfest, and the Magic Tree holiday lighting display. These events, along with award-winning schools and a strong local economy, have helped Lee's Summit earn consistent praise as one of Missouri's best places to live.

Built on a foundation of family, education, and opportunity, Lee's Summit offers a connected and vibrant community for residents, visitors, and businesses alike.

### DEMOGRAPHICS

	1 mile	3 mile	5 mile
<b>POPULATION</b>	<b>10,042</b>	<b>53,093</b>	<b>94,523</b>
<b>HOUSEHOLDS</b>	<b>4,342</b>	<b>21,883</b>	<b>36,763</b>
<b>EMPLOYEES</b>	<b>6,407</b>	<b>27,213</b>	<b>37,939</b>
<b>MED HH INCOME</b>	<b>\$72,394</b>	<b>\$92,254</b>	<b>\$103,385</b>

### AREA RETAIL | RESTAURANTS

Casey's

Advance  
Auto Parts

54<sup>TH</sup>  
STREET

HAWAIIAN BROS  
— ISLAND GRILL —

DOLLAR  
TREE

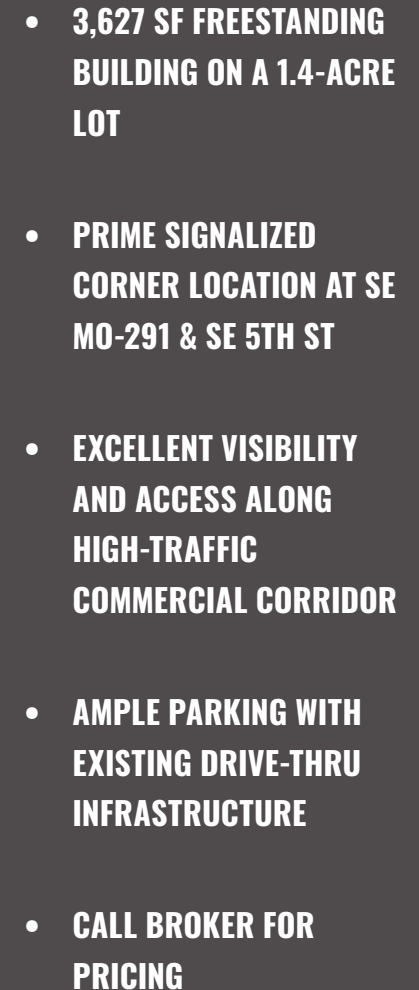
ALDI





KEVIN SHAPIRO

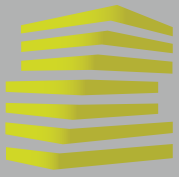
**314.818.1550 x106 (OFFICE)**  
**314.283.4691 (MOBILE)**  
**Kevin@LocationCRE.com**



[www.LocationCRE.com](http://www.LocationCRE.com)

THE INFORMATION IN THIS FLYER HAS BEEN OBTAINED FROM SOURCES BELIEVED RELIABLE. WHILE WE DO NOT DOUBT ITS ACCURACY, WE HAVE NOT VERIFIED IT AND MAKE NO GUARANTEE ABOUT IT. IT IS YOUR RESPONSIBILITY TO INDEPENDENTLY CONFIRM ITS ACCURACY AND COMPLETENESS. ANY PROJECTIONS, OPINIONS, ASSUMPTIONS OR ESTIMATES USED ARE FOR EXAMPLE ONLY AND DO NOT REPRESENT THE CURRENT OR FUTURE PERFORMANCE OF THE PROPERTY. THE VALUE OF THIS TRANSACTION TO YOU DEPENDS ON TAX AND OTHER FACTORS WHICH SHOULD BE EVALUATED BY YOUR TAX, FINANCIAL AND LEGAL ADVISORS. YOU AND YOUR ADVISORS SHOULD CONDUCT A CAREFUL, INDEPENDENT INVESTIGATION OF THE PROPERTY TO DETERMINE TO YOUR SATISFACTION THE SUITABILITY OF THE PROPERTY FOR YOUR NEEDS.





# 498 SE MO-291

## MARKET AERIAL

MIKE PETTIT

KEVIN SHAPIRO

314.818.1550 x108 (OFFICE)

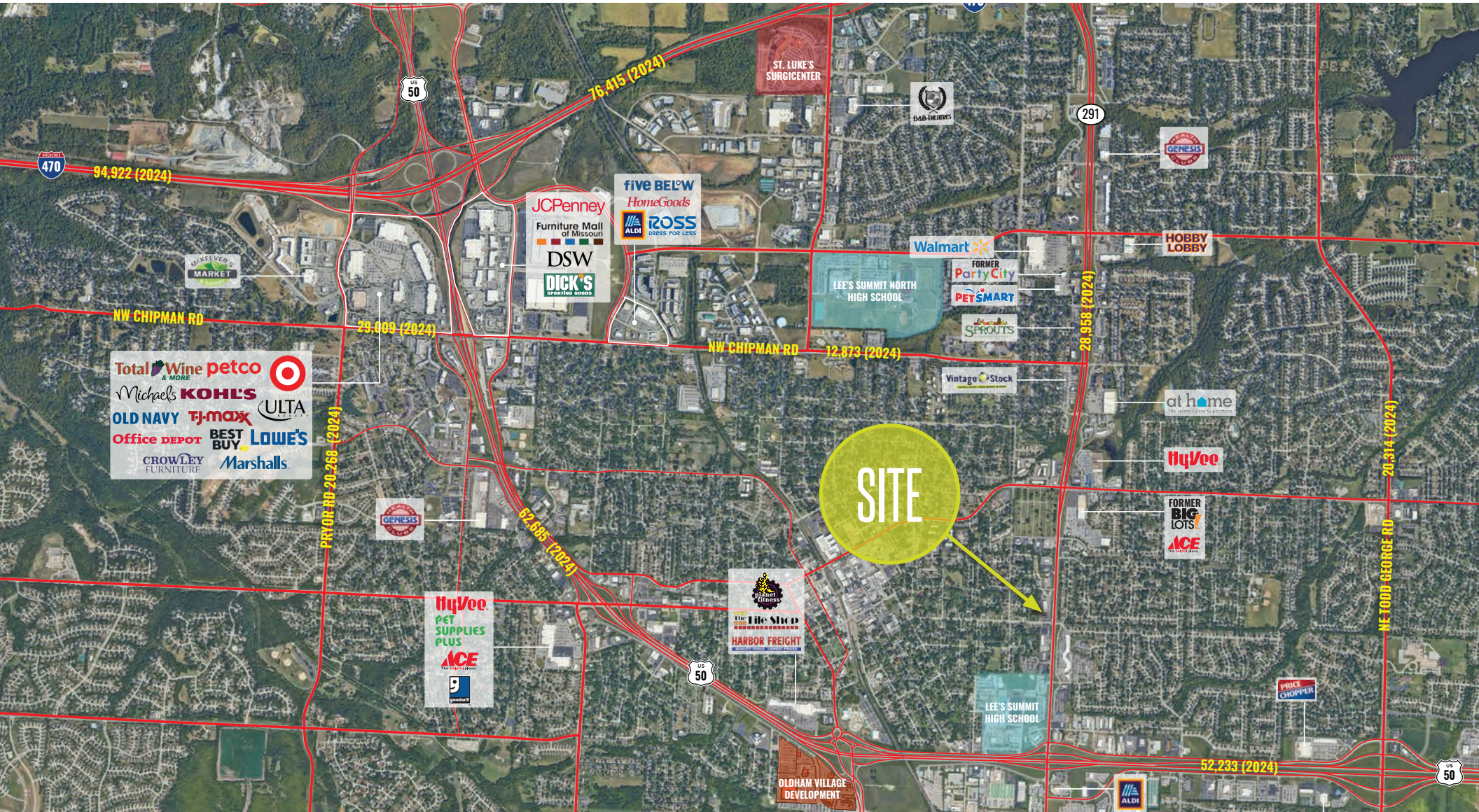
636.288.5412 (MOBILE)

Mike@LocationCRE.com

314.818.1550 x106 (OFFICE)

314.283.4691 (MOBILE)

Kevin@LocationCRE.com



www.LocationCRE.com

THE INFORMATION IN THIS FLYER HAS BEEN OBTAINED FROM SOURCES BELIEVED RELIABLE. WHILE WE DO NOT DOUBT ITS ACCURACY, WE HAVE NOT VERIFIED IT AND MAKE NO GUARANTEE ABOUT IT. IT IS YOUR RESPONSIBILITY TO INDEPENDENTLY CONFIRM ITS ACCURACY AND COMPLETENESS. ANY PROJECTIONS, OPINIONS, ASSUMPTIONS OR ESTIMATES USED ARE FOR EXAMPLE ONLY AND DO NOT REPRESENT THE CURRENT OR FUTURE PERFORMANCE OF THE PROPERTY. THE VALUE OF THIS TRANSACTION TO YOU DEPENDS ON TAX AND OTHER FACTORS WHICH SHOULD BE EVALUATED BY YOUR TAX, FINANCIAL AND LEGAL ADVISORS. YOU AND YOUR ADVISORS SHOULD CONDUCT A CAREFUL, INDEPENDENT INVESTIGATION OF THE PROPERTY TO DETERMINE TO YOUR SATISFACTION THE SUITABILITY OF THE PROPERTY FOR YOUR NEEDS.