

KIRKWOOD CENTRAL

300 N. KIRKWOOD RD

KIRKWOOD, MO



Intrinsic
DEVELOPMENT



LOCATION.
commercial real estate



KIRKWOOD CENTRAL

ABOUT THE DEVELOPMENT



BRAND NEW 4 STORY APPROXIMATELY 119,000 SF
MIXED-USE BUILDING CONSISTING OF APPROXIMATELY
6,000 SF OF RESTAURANT | RETAIL LEASE SPACE
CURRENTLY UNDER DEVELOPMENT.

OPEN AIR PARKING ON THE FIRST FLOOR AND 60
LUXURY MULTI-FAMILY UNITS ON THE FLOORS ABOVE
WITH ROOF TOP POOL AND AMENITY DECK.

PROJECT TO BE COMPLETED IN MID-2026

CENTRAL STATION



Google Maps



KIRKWOOD CENTRAL NEIGHBORHOOD VIDEO



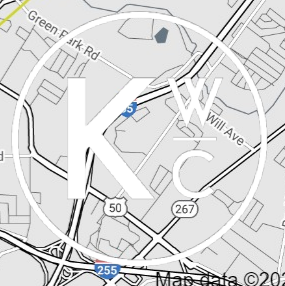
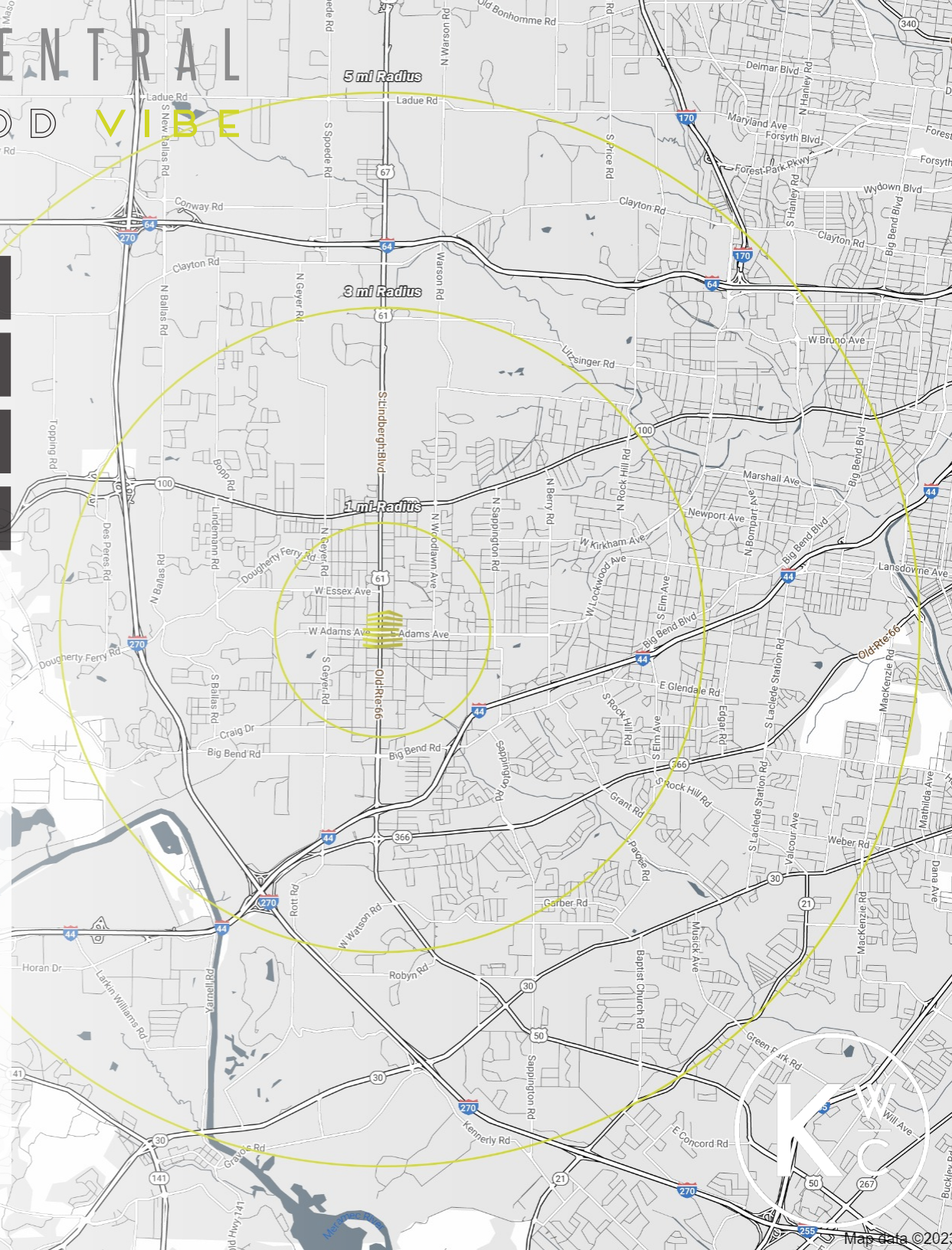
	1 mile	3 miles	5 miles
POPULATION	13,945	76,342	182,848
HOUSEHOLDS	6,054	30,703	77,511
EMPLOYEES	5,906	44,710	141,763
MED HH INCOME	\$113,833	\$137,432	\$120,464

LOCATED IN Southwest St. Louis County, Kirkwood boasts high property values, quality public and private schools, safe neighborhoods and exceptional City services. Kirkwood was established in 1853 and is known for its turn-of-the-century homes, a thriving business community, nationally recognized schools and community pride. Kirkwood has for 24 years been named a "Tree City USA" by the Arbor Day Foundation. Four different sites in Kirkwood are on the National Registry of Historic Places, including the Kirkwood Train Station.

THE DOWNTOWN Kirkwood business district is on the National Register of Historic Places and is home to many restaurants and shops as well as the Kirkwood Farmers' Market and Kirkwood Train Station. Built in 1893, the station serves as a stop for daily Amtrak passenger trains and is staffed entirely by Kirkwood residents who volunteer their time. The Farmers' Market was founded in 1976 as a bicentennial project by the City of Kirkwood. From April to September, the market sells fresh local produce and plants.

KIRKWOOD HAS A BUSTLING RETAIL community outside of the downtown area as well. Restaurants and shops are dotted up and down Manchester Road on the north side of Kirkwood. On the south side of Kirkwood, near Interstate 44, are two shopping centers, Kirkwood Commons and Kirkwood Crossing. Serving more than 550,000 visitors annually, The Magic House opened in 1979 and has 55,000 square feet of hands-on exhibits.

ST. LOUIS COMMUNITY COLLEGE-MERAMEC ("Meramec") is located on the south side of Kirkwood. The 78-acre campus is the largest community college in Missouri. Kirkwood School District is one of the oldest school districts in St. Louis County, and one of the oldest west of the Mississippi River. The district is "Accredited with Distinction," scoring 98.2% on the Missouri School Improvement Program's (MSIP) Annual Performance Report. Kirkwood School District serves all or portions of the surrounding communities. St. John Vianney and Ursuline Academy are local private high schools.





KIRKWOOD CENTRAL

AREA EATS + HOT SPOTS

ALPINE
SHOP

GLOBAL
FOODS MARKET



PIONEER
BAKERY CAFE
EST. 2020


honey bee's
[bakery + good eats]

D
DEWEY'S
PIZZA

Sweet Peace



CHASE



Walgreens

BILLY G'S
Kirkwood
LET'S EAT!

 **sammysoap®**
handmade in st. louis


THE
NORMAL BRAND

CLEMENTINE'S
CREAMERY




Crushed Red
Artfully Chopped Craft Salads™

Hi-Pointe
DRIVE-IN

Peacemaker
LOBSTER & CRAB

4 HANDS
BREWING CO.

Italiano Ristorante
CAFÉ NAPOLI

CITIZEN
KANES
STEAK HOUSE



KIRKWOOD CENTRAL

S I T E P L A N

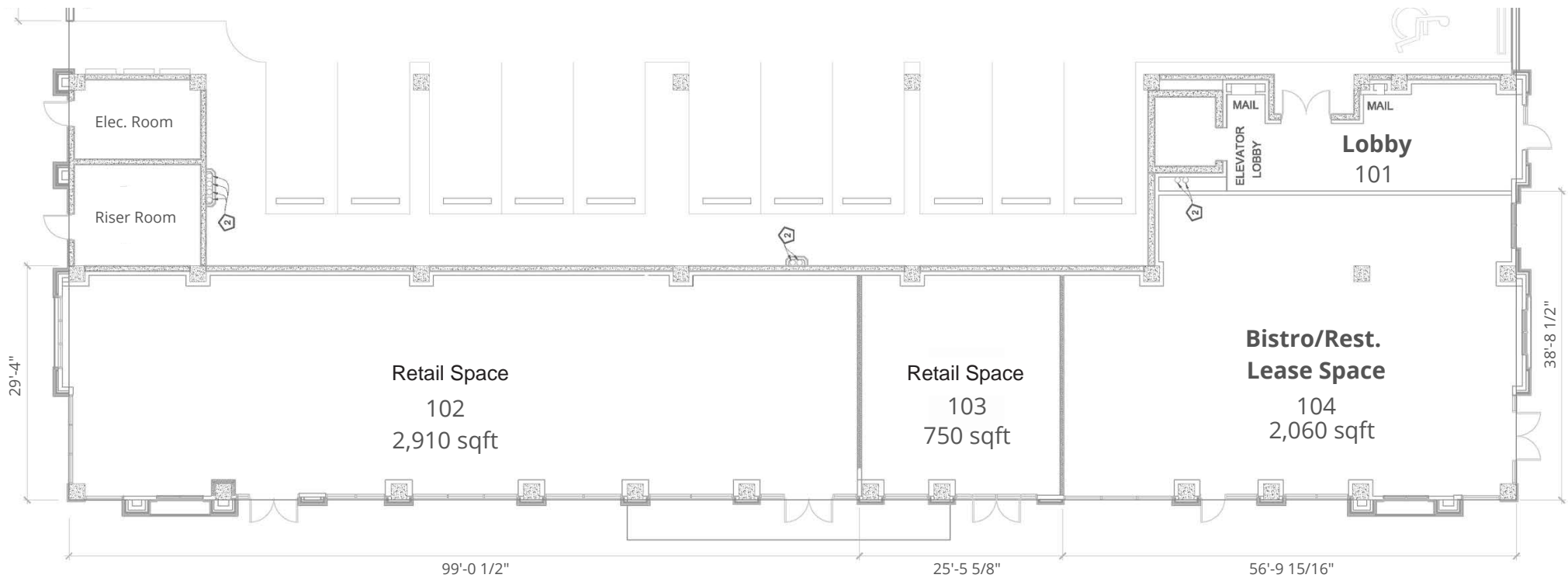




KIRKWOOD CENTRAL

COMMERCIAL SPACE PLAN

COMMERCIAL SPACE

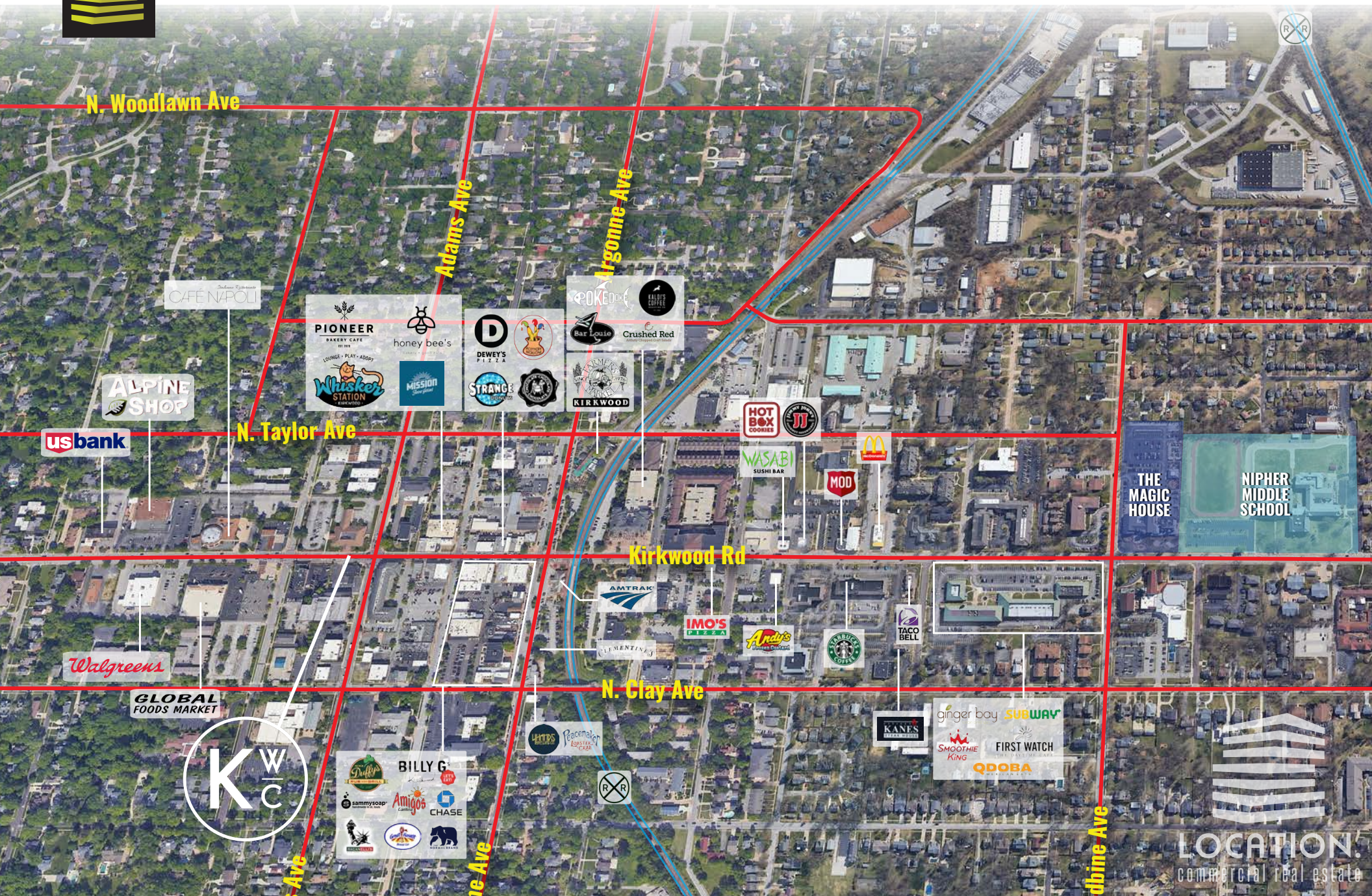


Commercial: 5,760 SQFT

INTRINSIC DEVELOPMENT | KIRKWOOD, MO



KIRKWOOD CENTRAL MARKET AERIAL





LOCATION.

commercial real estate

KEVIN SHAPIRO

314.283.4691 (mobile)

Kevin@LocationCRE.com



www.LocationCRE.com

THE INFORMATION IN THIS FLYER HAS BEEN OBTAINED FROM SOURCES BELIEVED RELIABLE. WHILE WE DO NOT DOUBT ITS ACCURACY, WE HAVE NOT VERIFIED IT AND MAKE NO GUARANTEE ABOUT IT. IT IS YOUR RESPONSIBILITY TO INDEPENDENTLY CONFIRM ITS ACCURACY AND COMPLETENESS. ANY PROJECTIONS, OPINIONS, ASSUMPTIONS OR ESTIMATES USED ARE FOR EXAMPLE ONLY AND DO NOT REPRESENT THE CURRENT OR FUTURE PERFORMANCE OF THE PROPERTY. THE VALUE OF THIS TRANSACTION TO YOU DEPENDS ON TAX AND OTHER FACTORS WHICH SHOULD BE EVALUATED BY YOUR TAX, FINANCIAL AND LEGAL ADVISORS. YOU AND YOUR ADVISORS SHOULD CONDUCT A CAREFUL, INDEPENDENT INVESTIGATION OF THE PROPERTY TO DETERMINE TO YOUR SATISFACTION THE SUITABILITY OF THE PROPERTY FOR YOUR NEEDS.