

0025

HARRY S. TRUMAN DR

GRANDVIEW, MO

Blue Ridge Blvd 11,027 (2023)

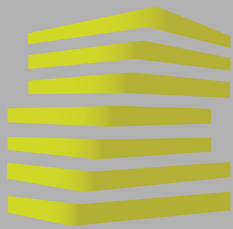
Harry S Truman Dr

7,530 (2023)



LOCATION.  
commercial real estate





# 5200 HARRY S. TRUMAN DR

## DEMOGRAPHICS + SITE PLAN

BEN WEIS

SCOTT BITNEY

314.818.1563 (OFFICE)

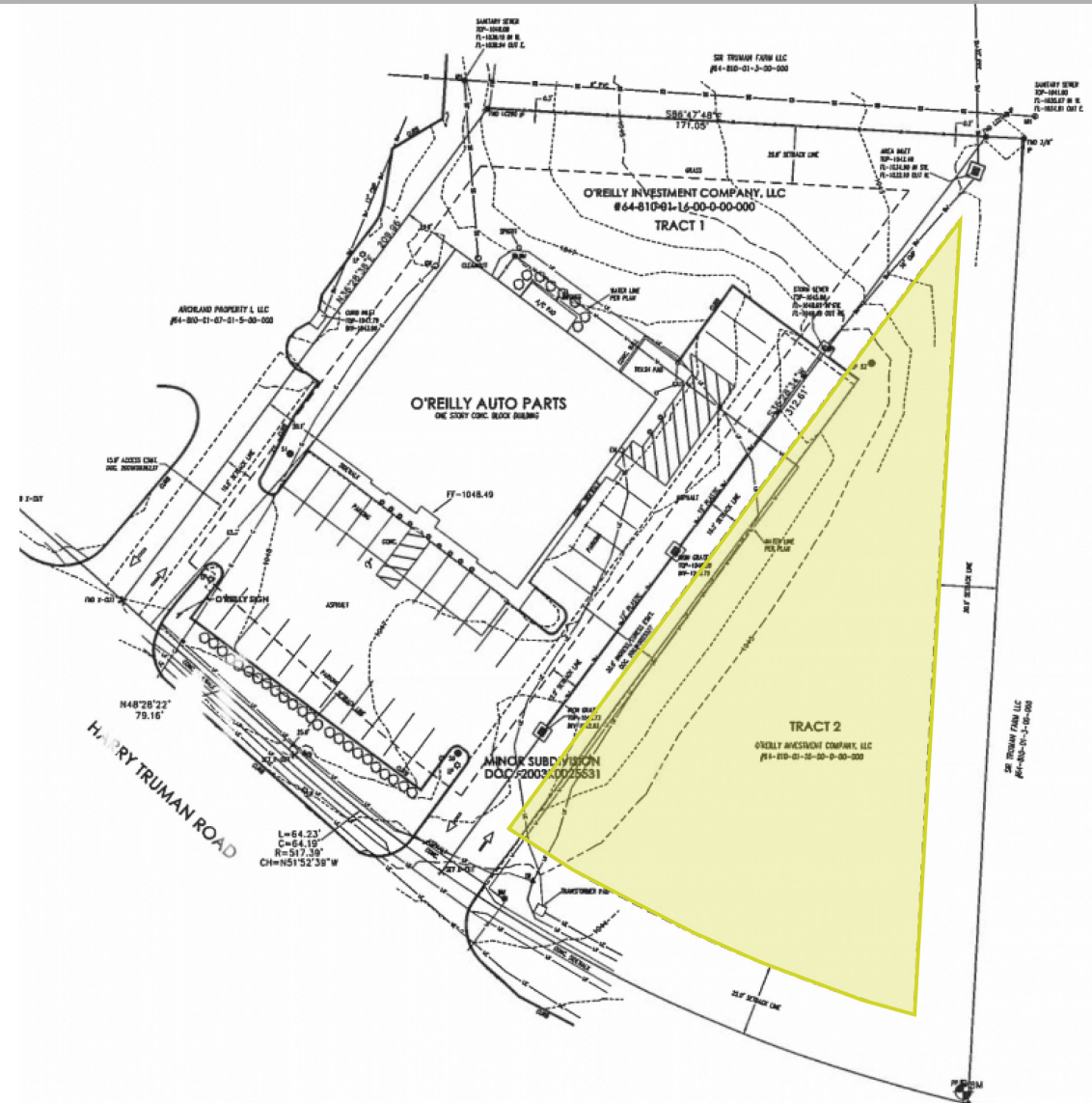
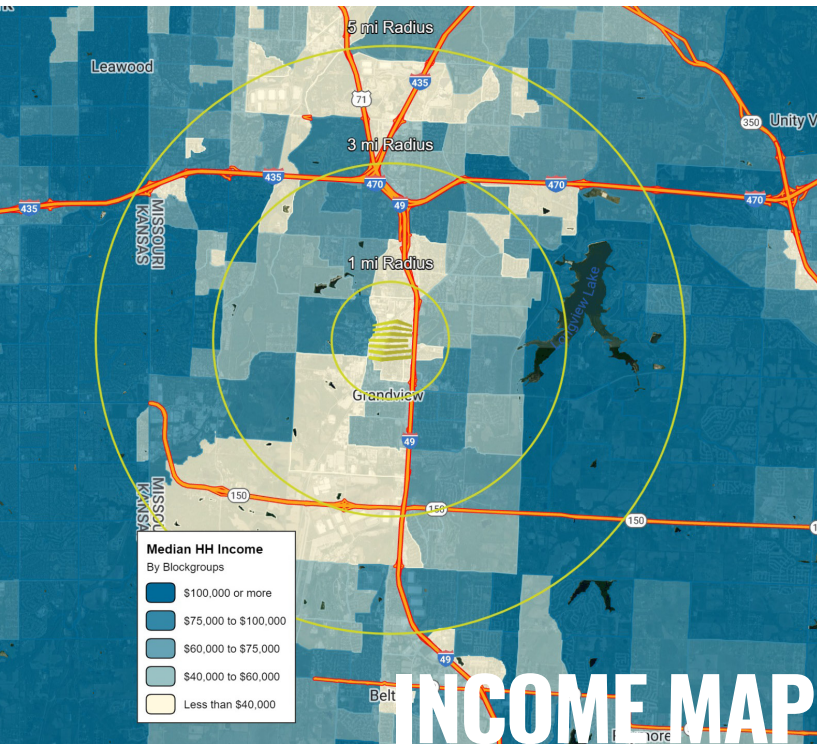
314.818.1550 (OFFICE)

314.629.6532 (MOBILE)

314.276.4673 (MOBILE)

Ben@LocationCRE.com

Scott@LocationCRE.com



DEMOGRAPHICS	1 mile	3 miles	5 miles
POPULATION	7,703	47,269	107,964
HOUSEHOLDS	3,453	19,374	45,851
EMPLOYEES	6,034	19,305	48,440
MED HH INCOME	\$47,126	\$57,634	\$73,788



www.LocationCRE.com

THE INFORMATION IN THIS FLYER HAS BEEN OBTAINED FROM SOURCES BELIEVED RELIABLE. WHILE WE DO NOT DOUBT ITS ACCURACY, WE HAVE NOT VERIFIED IT AND MAKE NO GUARANTEE ABOUT IT. IT IS YOUR RESPONSIBILITY TO INDEPENDENTLY CONFIRM ITS ACCURACY AND COMPLETENESS. ANY PROJECTIONS, OPINIONS, ASSUMPTIONS OR ESTIMATES USED ARE FOR EXAMPLE ONLY AND DO NOT REPRESENT THE CURRENT OR FUTURE PERFORMANCE OF THE PROPERTY. THE VALUE OF THIS TRANSACTION TO YOU DEPENDS ON TAX AND OTHER FACTORS WHICH SHOULD BE EVALUATED BY YOUR TAX, FINANCIAL AND LEGAL ADVISORS. YOU AND YOUR ADVISORS SHOULD CONDUCT A CAREFUL, INDEPENDENT INVESTIGATION OF THE PROPERTY TO DETERMINE TO YOUR SATISFACTION THE SUITABILITY OF THE PROPERTY FOR YOUR NEEDS.





# 5200 HARRY S. TRUMAN DR

## AERIAL + DETAILS

BEN WEIS

SCOTT BITNEY

314.818.1563 (OFFICE)

314.818.1550 (OFFICE)

314.629.6532 (MOBILE)

314.276.4673 (MOBILE)

Ben@LocationCRE.com

Scott@LocationCRE.com

- 0.74 ACRE LAND SITE ON HARRY S. TRUMAN DR.
- AVAILABLE FOR SALE ONLY
- CONTACT BROKER FOR PRICING



# LOCATION.

commercial real estate



REALTY RESOURCES MEMBER

www.LocationCRE.com

THE INFORMATION IN THIS FLYER HAS BEEN OBTAINED FROM SOURCES BELIEVED RELIABLE. WHILE WE DO NOT DOUBT ITS ACCURACY, WE HAVE NOT VERIFIED IT AND MAKE NO GUARANTEE ABOUT IT. IT IS YOUR RESPONSIBILITY TO INDEPENDENTLY CONFIRM ITS ACCURACY AND COMPLETENESS. ANY PROJECTIONS, OPINIONS, ASSUMPTIONS OR ESTIMATES USED ARE FOR EXAMPLE ONLY AND DO NOT REPRESENT THE CURRENT OR FUTURE PERFORMANCE OF THE PROPERTY. THE VALUE OF THIS TRANSACTION TO YOU DEPENDS ON TAX AND OTHER FACTORS WHICH SHOULD BE EVALUATED BY YOUR TAX, FINANCIAL AND LEGAL ADVISORS. YOU AND YOUR ADVISORS SHOULD CONDUCT A CAREFUL, INDEPENDENT INVESTIGATION OF THE PROPERTY TO DETERMINE TO YOUR SATISFACTION THE SUITABILITY OF THE PROPERTY FOR YOUR NEEDS.