

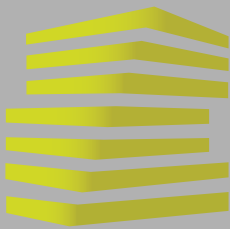
6,033 SF FORMER RESTAURANT AVAILABLE FOR LEASE

2 7 6 5 N . H I G H W A Y 6 7

FLORISSANT, MO



LOCATION.
commercial real estate



2765 N. HWY 67 - FORMER RESTAURANT

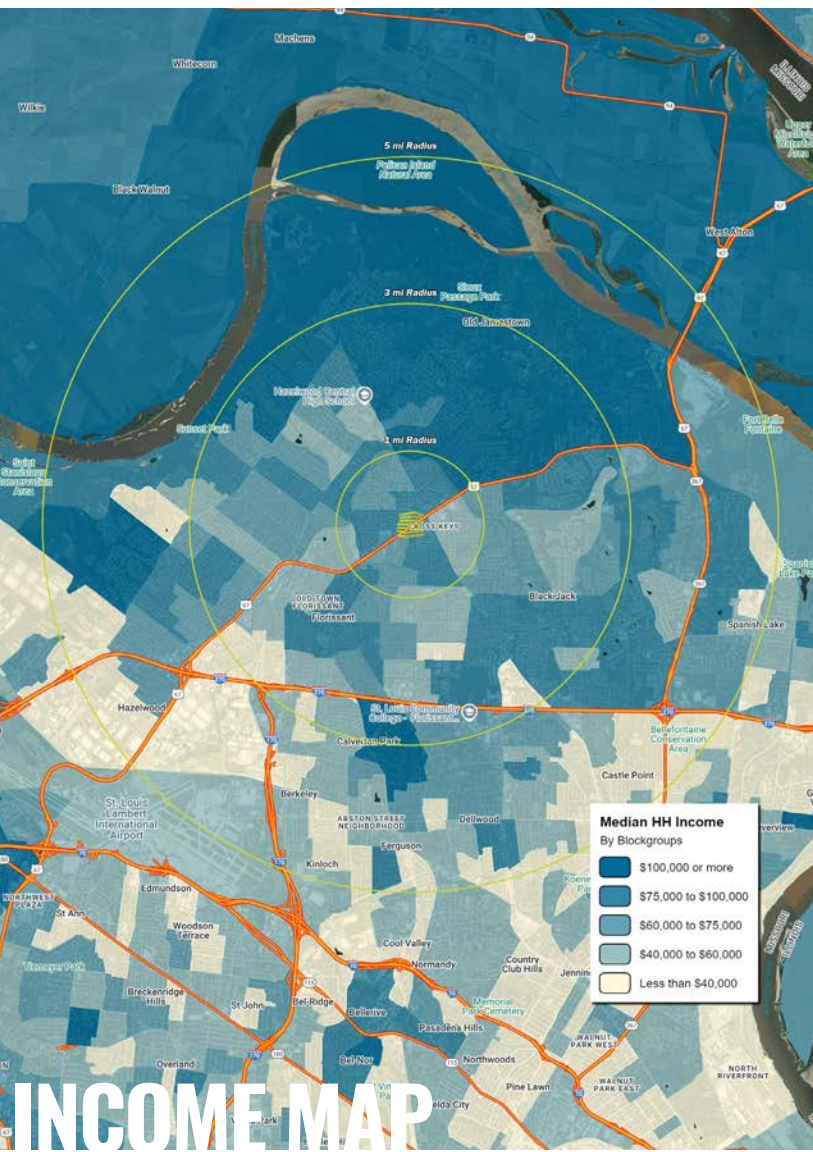
NEIGHBORHOOD VIBE

JOE LODES

314.818.1564 (OFFICE)
314.852.8234 (MOBILE)
Joe@LocationCRE.com

KEVIN SHAPIRO

314.818.1550 (OFFICE)
314.283.4691 (MOBILE)
Kevin@LocationCRE.com



TRADE AREA OVERVIEW

FLORISSANT, A SECOND-RING SUBURB OF ST. LOUIS, IS LOCATED IN NORTH ST. LOUIS COUNTY APPROXIMATELY 15 MILES NORTHWEST OF DOWNTOWN ST. LOUIS. IT IS THE LARGEST CITY IN NORTH ST. LOUIS COUNTY.

FLORISSANT HAS A RICH HISTORY, DATING BACK TO THE LATE 1700S WHEN FRENCH COLONISTS SETTLED IN THE AREA. THE CITY PLAYED AN IMPORTANT ROLE IN THE LEWIS AND CLARK EXPEDITION, AND WAS A MAJOR HUB FOR TRADE AND TRANSPORTATION IN THE 1800S. TODAY, FLORISSANT IS KNOWN FOR ITS HISTORIC ARCHITECTURE, WHICH INCLUDES SEVERAL WELL-PRESERVED EXAMPLES OF 19TH-CENTURY HOMES AND BUILDINGS.

THE CITY OF FLORISSANT IS HOME TO SEVERAL PARKS AND RECREATIONAL AREAS, INCLUDING THE FLORISSANT VALLEY PARK, WHICH FEATURES A COMMUNITY CENTER, PLAYGROUNDS, AND SPORTS FIELDS. THE CITY ALSO HOSTS SEVERAL COMMUNITY EVENTS THROUGHOUT THE YEAR, INCLUDING THE FLORISSANT VALLEY OF FLOWERS FESTIVAL, THE OLD TOWN FALL FESTIVAL, AND A FARMERS' MARKET.

FLORISSANT HAS MAJOR EMPLOYERS IN INDUSTRIES SUCH AS HEALTHCARE, MANUFACTURING, AND RETAIL. THE CITY IS ALSO KNOWN FOR ITS STRONG EDUCATION SYSTEM, WITH SEVERAL PUBLIC AND PRIVATE SCHOOLS SERVING STUDENTS FROM KINDERGARTEN THROUGH HIGH SCHOOL. THE CITY IS HOME TO THE ST. LOUIS COMMUNITY COLLEGE-FLORISSANT VALLEY CAMPUS, WHICH OFFERS A VARIETY OF DEGREE AND CERTIFICATE PROGRAMS.

IN ADDITION TO ITS ECONOMIC AND EDUCATIONAL OPPORTUNITIES, FLORISSANT IS A DIVERSE AND WELCOMING COMMUNITY WITH A STRONG SENSE OF CIVIC PRIDE. NESTLED IN THE MIDDLE OF THE CITY IS HISTORIC OLD TOWN FLORISSANT, COMBINING VINTAGE NOSTALGIA WITH A FUN, BUSTLING COMMUNITY. STORES, RESTAURANTS AND OTHER BUSINESSES ARE HOUSED IN CHARMING HISTORIC BUILDINGS, AND ROWS OF RESTORED CENTURY HOMES RUN ALONG PEACEFUL TREE-LINED STREETS. WITH AFFORDABLE HOUSING AND GOOD SCHOOLS, FLORISSANT IS A PROGRESSIVE AND THRIVING TOWN WITH A REPUTATION FOR BEING "WARM AND FRIENDLY."

DEMOGRAPHICS

	1 mile	3 miles	5 miles
POPULATION	13,471	95,642	173,343
HOUSEHOLDS	5,412	38,278	69,728
EMPLOYEES	3,893	25,664	55,361
MED HH INCOME	\$72,266	\$73,533	\$67,650

AREA RETAIL | RESTAURANTS



Walmart



Marshalls

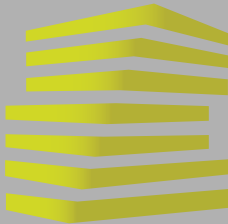


Schnucks



PETSMART





2765 N. HWY 67 - FORMER RESTAURANT

ZOOM AERIAL

JOE LODES

KEVIN SHAPIRO

314.818.1564 (OFFICE)

314.818.1550 (OFFICE)

314.852.8234 (MOBILE)

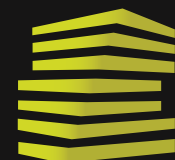
314.283.4691 (MOBILE)

Joe@LocationCRE.com

Kevin@LocationCRE.com



- 6,033 SF FORMER HOOTERS RESTAURANT AVAILABLE FOR LEASE IN FLORISSANT, MO
- BUILDING SITS ON 1.5 ACRES AND WAS BUILT IN 2007
- EXCELLENT VISIBILITY TO LINDBERGH BLVD WITH EXPOSURE TO OVER 30,000 VPD
- PROMINENT NATIONAL RETAIL IN SURROUNDING AREA INCLUDING WALMART, TARGET, HOME DEPOT, AND ROSS DRESS FOR LESS
- PYLON SIGN AVAILABLE
- CALL BROKER FOR PRICING AND ADDITIONAL INFORMATION



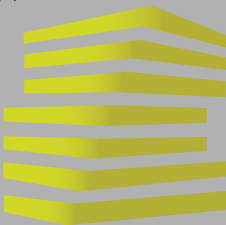
LOCATION.
commercial real estate



REALTY
RESOURCES
MEMBER

www.LocationCRE.com

THE INFORMATION IN THIS FLYER HAS BEEN OBTAINED FROM SOURCES BELIEVED RELIABLE. WHILE WE DO NOT DOUBT ITS ACCURACY, WE HAVE NOT VERIFIED IT AND MAKE NO GUARANTEE ABOUT IT. IT IS YOUR RESPONSIBILITY TO INDEPENDENTLY CONFIRM ITS ACCURACY AND COMPLETENESS. ANY PROJECTIONS, OPINIONS, ASSUMPTIONS OR ESTIMATES USED ARE FOR EXAMPLE ONLY AND DO NOT REPRESENT THE CURRENT OR FUTURE PERFORMANCE OF THE PROPERTY. THE VALUE OF THIS TRANSACTION TO YOU DEPENDS ON TAX AND OTHER FACTORS WHICH SHOULD BE EVALUATED BY YOUR TAX, FINANCIAL AND LEGAL ADVISORS. YOU AND YOUR ADVISORS SHOULD CONDUCT A CAREFUL, INDEPENDENT INVESTIGATION OF THE PROPERTY TO DETERMINE TO YOUR SATISFACTION THE SUITABILITY OF THE PROPERTY FOR YOUR NEEDS.



2765 N. HWY 67 - FORMER RESTAURANT

SITE PLAN

JOE LODES

314.818.1564 (OFFICE)

314.852.8234 (MOBILE)

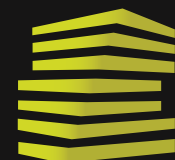
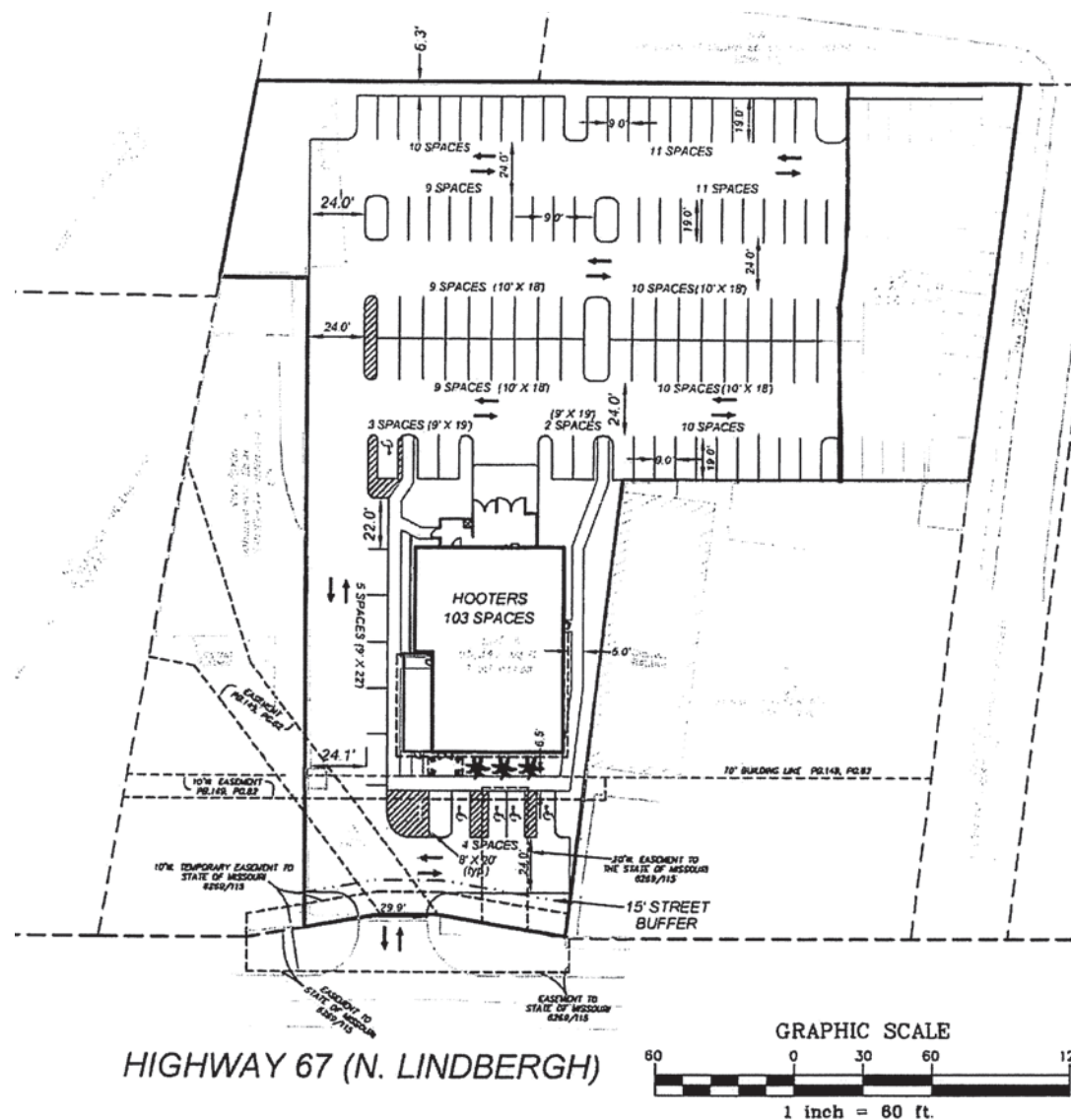
Joe@LocationCRE.com

KEVIN SHAPIRO

314.818.1550 (OFFICE)

314.283.4691 (MOBILE)

Kevin@LocationCRE.com

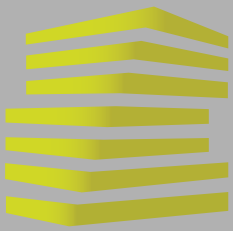


LOCATION.
commercial real estate

f @ in REALTY
RESOURCES
MEMBER

www.LocationCRE.com

THE INFORMATION IN THIS FLYER HAS BEEN OBTAINED FROM SOURCES BELIEVED RELIABLE. WHILE WE DO NOT DOUBT ITS ACCURACY, WE HAVE NOT VERIFIED IT AND MAKE NO GUARANTEE ABOUT IT. IT IS YOUR RESPONSIBILITY TO INDEPENDENTLY CONFIRM ITS ACCURACY AND COMPLETENESS. ANY PROJECTIONS, OPINIONS, ASSUMPTIONS OR ESTIMATES USED ARE FOR EXAMPLE ONLY AND DO NOT REPRESENT THE CURRENT OR FUTURE PERFORMANCE OF THE PROPERTY. THE VALUE OF THIS TRANSACTION TO YOU DEPENDS ON TAX AND OTHER FACTORS WHICH SHOULD BE EVALUATED BY YOUR TAX, FINANCIAL AND LEGAL ADVISORS. YOU AND YOUR ADVISORS SHOULD CONDUCT A CAREFUL, INDEPENDENT INVESTIGATION OF THE PROPERTY TO DETERMINE TO YOUR SATISFACTION THE SUITABILITY OF THE PROPERTY FOR YOUR NEEDS.



2765 N. HWY 67 - FORMER RESTAURANT

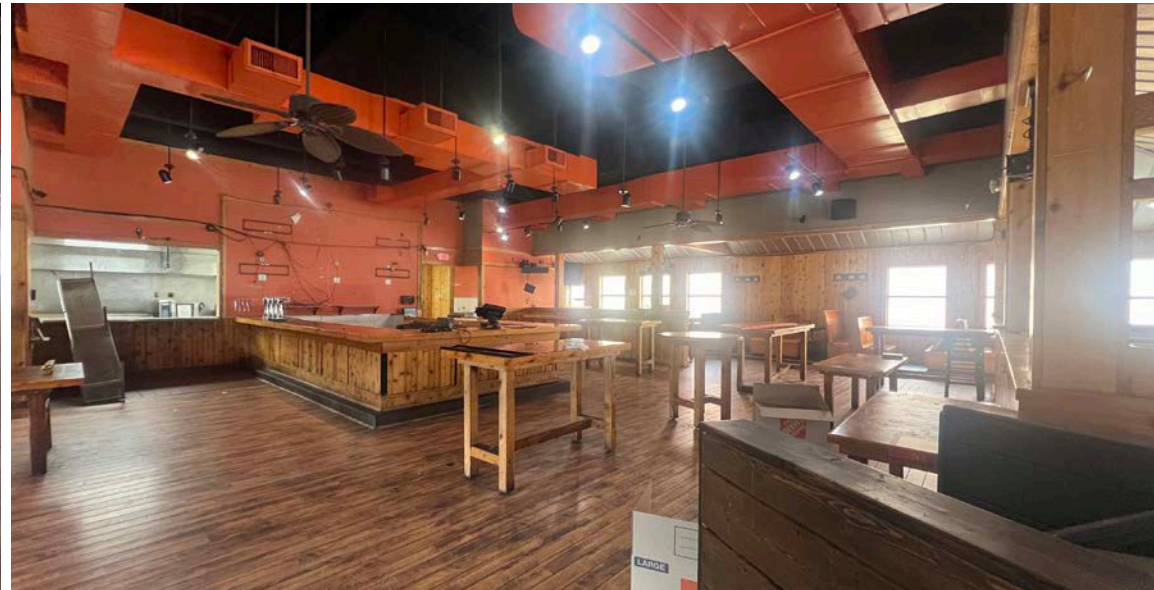
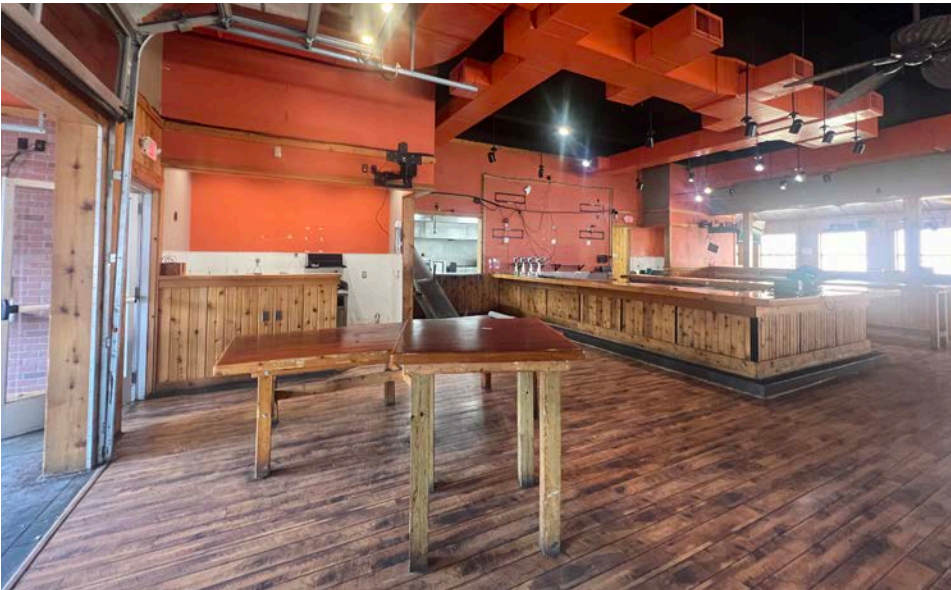
INTERIOR PHOTOS

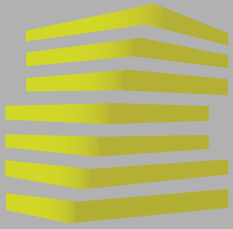
JOE LODES

314.818.1564 (OFFICE)
314.852.8234 (MOBILE)
Joe@LocationCRE.com

KEVIN SHAPIRO

314.818.1550 (OFFICE)
314.283.4691 (MOBILE)
Kevin@LocationCRE.com





2765 N. HWY 67 - FORMER RESTAURANT

MARKET AERIAL

JOE LODES

KEVIN SHAPIRO

314.818.1564 (OFFICE)
314.852.8234 (MOBILE)
Joe@LocationCRE.com

314.818.1550 (OFFICE)
314.283.4691 (MOBILE)
Kevin@LocationCRE.com



LOCATION.
commercial real estate

f i in REALTY RESOURCES MEMBER

www.LocationCRE.com

THE INFORMATION IN THIS FLYER HAS BEEN OBTAINED FROM SOURCES BELIEVED RELIABLE. WHILE WE DO NOT DOUBT ITS ACCURACY, WE HAVE NOT VERIFIED IT AND MAKE NO GUARANTEE ABOUT IT. IT IS YOUR RESPONSIBILITY TO INDEPENDENTLY CONFIRM ITS ACCURACY AND COMPLETENESS. ANY PROJECTIONS, OPINIONS, ASSUMPTIONS OR ESTIMATES USED ARE FOR EXAMPLE ONLY AND DO NOT REPRESENT THE CURRENT OR FUTURE PERFORMANCE OF THE PROPERTY. THE VALUE OF THIS TRANSACTION TO YOU DEPENDS ON TAX AND OTHER FACTORS WHICH SHOULD BE EVALUATED BY YOUR TAX, FINANCIAL AND LEGAL ADVISORS. YOU AND YOUR ADVISORS SHOULD CONDUCT A CAREFUL, INDEPENDENT INVESTIGATION OF THE PROPERTY TO DETERMINE TO YOUR SATISFACTION THE SUITABILITY OF THE PROPERTY FOR YOUR NEEDS.