

FENTON LANDINGS

FENTON, MO

750 ASSEMBLY PARKWAY



GREY EAGLE
DISTRIBUTORS

wally's

FENTON
FIRE DISTRICT

amazon

1ST PHORM

Fenton Logistics Park Blvd

Assembly Pkwy

1ST PHORM

CTDI

1ST PHORM

LOT 1
SITE

LOT 2

Wendys

LOT 4

LOT 5

LOT 6

LOT 7

N. Hwy Dr W 13,747 (2024)

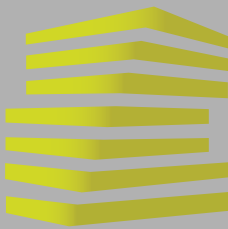


92,408 (2024)

S. Hwy Dr E 6,669 (2024)



LOCATION.
commercial real estate



FENTON LANDINGS

NEIGHBORHOOD VIBE

JOE LODES

314.818.1564 (OFFICE)
314.852.8234 (MOBILE)
Joe@LocationCRE.com

KEVIN SHAPIRO

314.818.1560 (OFFICE)
314.283.4691 (MOBILE)
Kevin@LocationCRE.com

INCOME MAP



TRADE AREA OVERVIEW

FENTON, MISSOURI, LOCATED IN SOUTHWESTERN ST. LOUIS COUNTY, IS A THRIVING BUSINESS COMMUNITY WITH MODERN INFRASTRUCTURE AND ACCESS TO MAJOR HIGHWAYS. FENTON'S RESIDENTS ENJOY CONVENIENT SHOPPING, A GREAT PARK SYSTEM, HIGHLY-RATED SCHOOLS AND CLOSE PROXIMITY TO ANY MAJOR ST. LOUIS METROPOLITAN LOCATION. INTERSTATE 44 RUNS THROUGH FENTON, AND THE CITY IS BORDERED BY THE MERAMEC RIVER.

THE FENTON AREA IS HOME TO SEVERAL CORPORATIONS' HEADQUARTERS, INCLUDING UniGroup, Wolff Shoe, Joyce Meyer Ministries and Fabick CAT. THE HEADQUARTERS FOR MARITZ IS ALSO LOCATED IN FENTON ON A 174-ACRE CAMPUS. THE FORMER ST. LOUIS COUNTY CHRYSLER PLANT WAS RECENTLY REDEVELOPED TO BECOME FENTON LOGISTICS PARK. THE 295-ACRE SITE IS BORDERED BY INTERSTATE 44 AND STRATEGICALLY SITUATED NEAR THE INTERCHANGE OF INTERSTATES 44 AND 270. THE PARK IS HOME A MIX OF INDUSTRIAL AND OFFICE TENANTS INCLUDING BASF, BJC Medical Group, and 1st PHORM. Wally's, THE PONTIAC, ILLINOIS-BASED GAS STATION AND RETAIL SHOP OPERATOR, RECENTLY OPENED ITS FIRST ST. LOUIS-AREA LOCATION AT THE PARK AS WELL.

FENTON HAS A BUSTLING RETAIL COMMUNITY. FOUR DIFFERENT SHOPPING CENTERS IN THE MO-141 / MO-30 PROVIDE THE AREA WITH ALMOST UNLIMITED SHOPPING AND DINING OPTIONS. THE LARGEST OF THESE CENTERS, GRAVOIS BLUFFS, IS A POWER CENTER CONSISTING OF 1,500,000 SQUARE FEET, LOCATED ON BOTH SIDES OF HIGHWAY 141, JUST PAST HIGHWAY 30. GRAVOIS BLUFFS IS ANCHORED BY NATIONAL RETAILERS SUCH AS TARGET, SCHNUCKS, LOWE'S, KOHL'S, WALMART, AND AT HOME. GRAVOIS BLUFFS SUMMIT, ADJACENT TO GRAVOIS BLUFFS' WEST SIDE, IS ANCHORED BY JC PENNEY AND PARTY CITY. FENTON COMMONS, FENTON PLAZA AND DIERBERG'S FENTON CROSSING SURROUND GRAVOIS BLUFFS AND OFFER MANY MORE SHOPPING OPTIONS.

THE ST. LOUIS METRO AREA LOVES ITS SPORTS AND RECREATION, AND FENTON IS NO EXCEPTION. THE WORLD WIDE TECHNOLOGY SOCCER PARK INCLUDES SIX FULL-SIZE FIELDS (FOUR TURF, TWO GRASS), OFFICE SPACE FOR CLUB STAFF, INDOOR EVENT SPACE, FOOD AND BEVERAGE OPTIONS, AND A FAN SHOP. IT ALSO FEATURES THE INDOOR PERFORMANCE TRAINING CENTER AT THE NORTH END OF THE FACILITY. THE FACILITY HAS UNDERGONE SIGNIFICANT RENOVATIONS RECENTLY, INCLUDING NEW FIELD LIGHTING, BLEACHER UPGRADES, LOCKER ROOM RENOVATIONS, AND THE NEW BUDWEISER BIERGARTEN. WORLD WIDE TECHNOLOGY SOCCER PARK WILL HOST ALL HOME GAMES FOR SAINT LOUIS FC, AS WELL AS TRAINING AND GAMES FOR YOUTH CLUB ST. LOUIS SCOTT GALLAGHER.

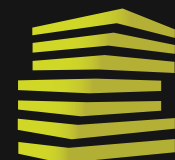
SOUTH ST. LOUIS COUNTY, JEFFERSON COUNTY AND THE SURROUNDING AREAS ARE IN CLOSE PROXIMITY TO ST. CLARE HEALTH CENTER, LOCATED IN THE HEART OF FENTON. OPENED IN 2009, ST. CLARE HEALTH CENTER IS A FULL SERVICE HOSPITAL THAT INCLUDES THE SSM HEART INSTITUTE, SSM NEUROSCIENCES INSTITUTE AND SSM CANCER CARE.

FENTON IS SERVED BY TOP-RATED LINDBERGH AND ROCKWOOD SCHOOL DISTRICTS.

DEMOGRAPHICS

	1 mile	3 mile	5 mile
POPULATION	783	47,592	152,607
HOUSEHOLDS	298	19,837	62,729
EMPLOYEES	13,574	39,034	97,490
MED HH INCOME	\$119,518	\$109,885	\$115,345

AREA RETAIL | RESTAURANTS

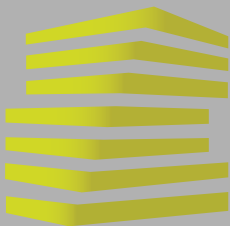


LOCATION.
commercial real estate



www.LocationCRE.com

THE INFORMATION IN THIS FLYER HAS BEEN OBTAINED FROM SOURCES BELIEVED RELIABLE. WHILE WE DO NOT DOUBT ITS ACCURACY, WE HAVE NOT VERIFIED IT AND MAKE NO GUARANTEE ABOUT IT. IT IS YOUR RESPONSIBILITY TO INDEPENDENTLY CONFIRM ITS ACCURACY AND COMPLETENESS. ANY PROJECTIONS, OPINIONS, ASSUMPTIONS OR ESTIMATES USED ARE FOR EXAMPLE ONLY AND DO NOT REPRESENT THE CURRENT OR FUTURE PERFORMANCE OF THE PROPERTY. THE VALUE OF THIS TRANSACTION TO YOU DEPENDS ON TAX AND OTHER FACTORS WHICH SHOULD BE EVALUATED BY YOUR TAX, FINANCIAL AND LEGAL ADVISORS. YOU AND YOUR ADVISORS SHOULD CONDUCT A CAREFUL, INDEPENDENT INVESTIGATION OF THE PROPERTY TO DETERMINE TO YOUR SATISFACTION THE SUITABILITY OF THE PROPERTY FOR YOUR NEEDS.



FENTON LANDINGS

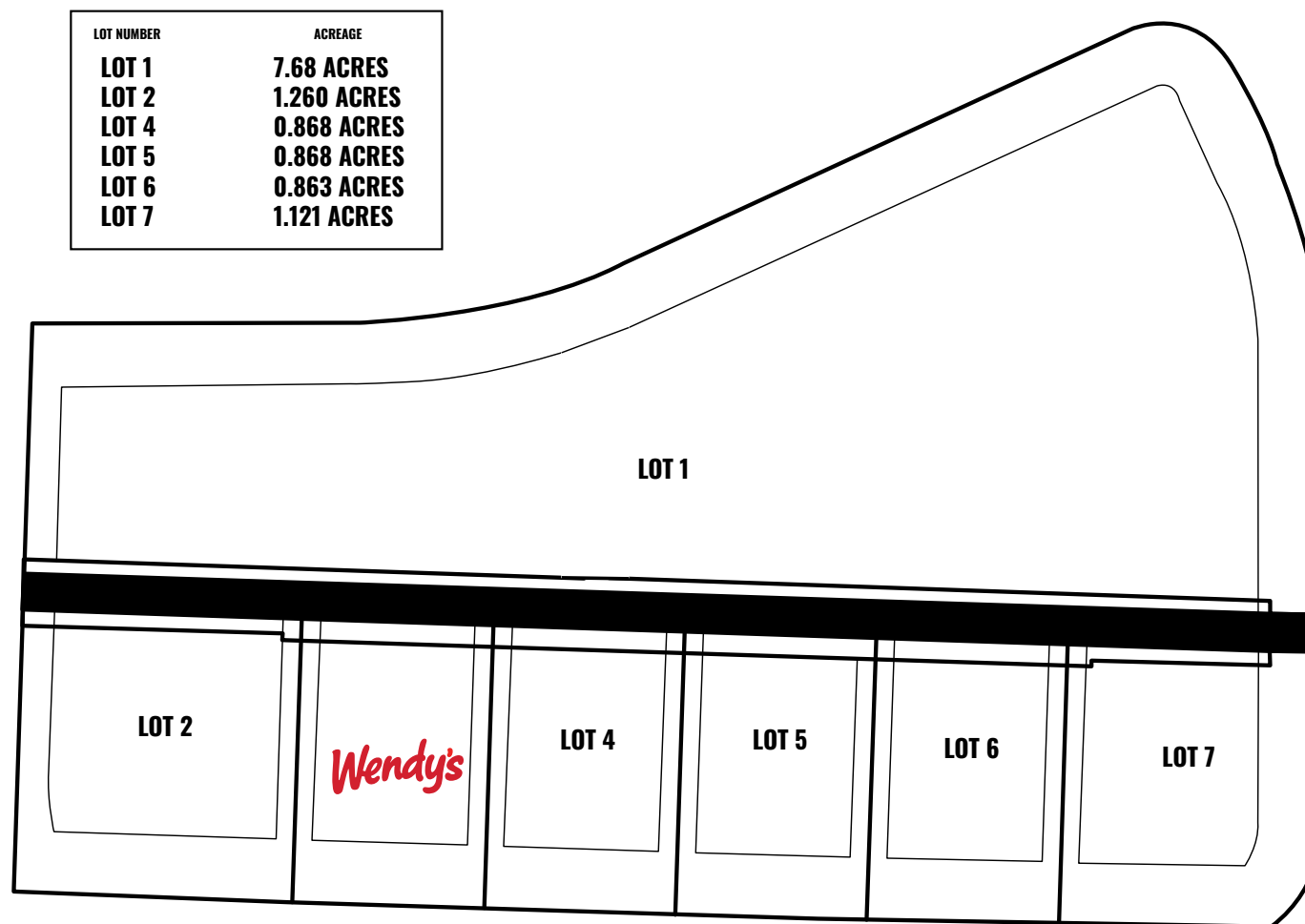
SURVEY

JOE LODES

314.818.1564 (OFFICE)
314.852.8234 (MOBILE)
Joe@LocationCRE.com

KEVIN SHAPIRO

314.818.1560 (OFFICE)
314.283.4691 (MOBILE)
Kevin@LocationCRE.com



LOCATION.
commercial real estate



www.LocationCRE.com

THE INFORMATION IN THIS FLYER HAS BEEN OBTAINED FROM SOURCES BELIEVED RELIABLE. WHILE WE DO NOT DOUBT ITS ACCURACY, WE HAVE NOT VERIFIED IT AND MAKE NO GUARANTEE ABOUT IT. IT IS YOUR RESPONSIBILITY TO INDEPENDENTLY CONFIRM ITS ACCURACY AND COMPLETENESS. ANY PROJECTIONS, OPINIONS, ASSUMPTIONS OR ESTIMATES USED ARE FOR EXAMPLE ONLY AND DO NOT REPRESENT THE CURRENT OR FUTURE PERFORMANCE OF THE PROPERTY. THE VALUE OF THIS TRANSACTION TO YOU DEPENDS ON TAX AND OTHER FACTORS WHICH SHOULD BE EVALUATED BY YOUR TAX, FINANCIAL AND LEGAL ADVISORS. YOU AND YOUR ADVISORS SHOULD CONDUCT A CAREFUL, INDEPENDENT INVESTIGATION OF THE PROPERTY TO DETERMINE TO YOUR SATISFACTION THE SUITABILITY OF THE PROPERTY FOR YOUR NEEDS.



FENTON LANDINGS

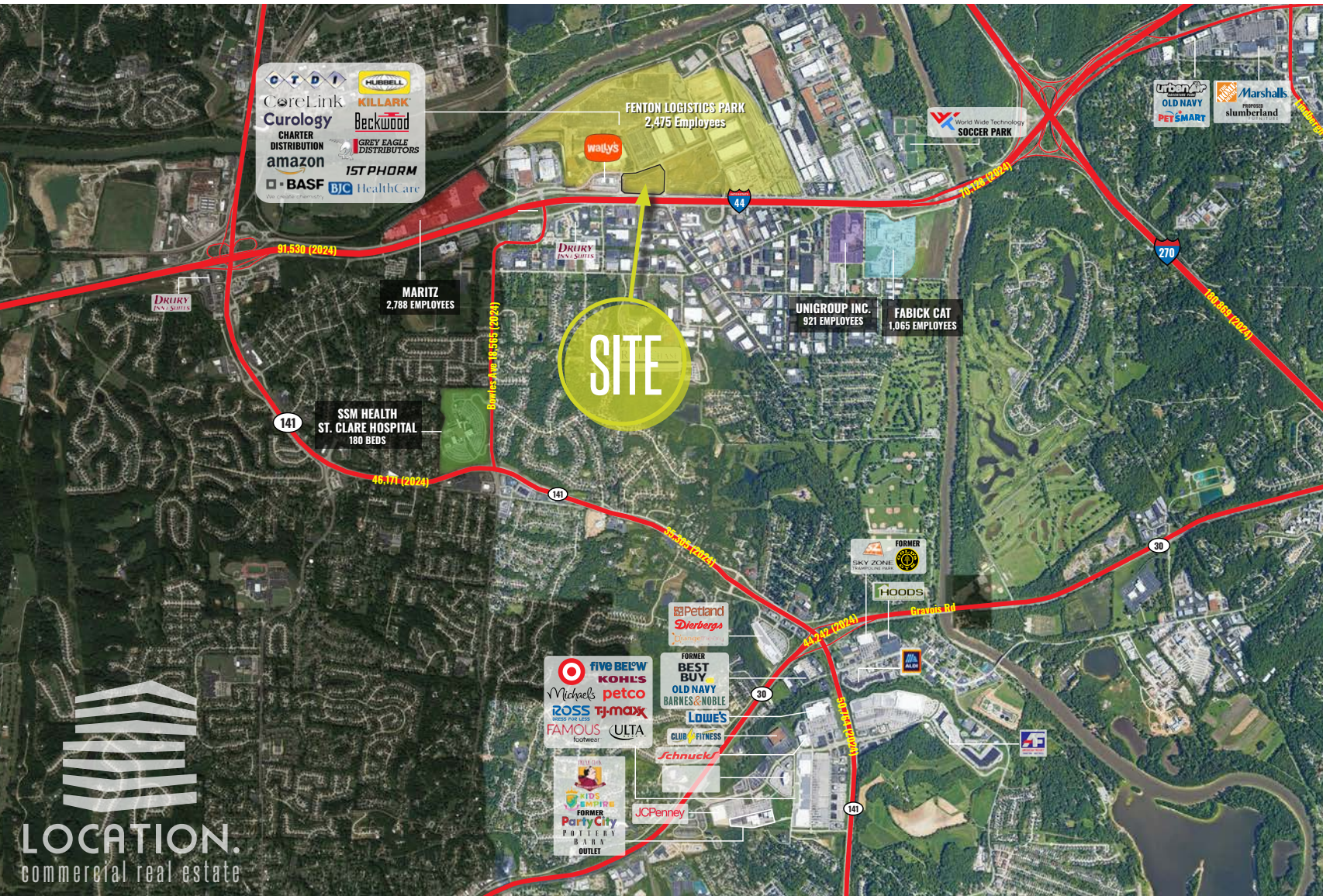
MARKET AERIAL + DETAILS

JOE LODES

314.818.1564 (OFFICE)
314.852.8234 (MOBILE)
Joe@LocationCRE.com

KEVIN SHAPIRO

314.818.1560 (OFFICE)
314.283.4691 (MOBILE)
Kevin@LocationCRE.com



- 0.5 - 12.66 ACRES
AVAILABLE FOR LEASE,
BUILD TO SUIT, OR SALE
- GREAT VISIBILITY AND
SIGNAGE OPPORTUNITIES
TO I-44
- ADJACENT TO THE
NEW WALLY'S, WITH
2.5M ANNUAL VISITS
ACCORDING TO PLACER.
AI (208,000+/- MONTH)
- HEAVY TRAFFIC
EXPOSURE TO OVER
96,000 VEHICLES PER
DAY ON I-44
- PLEASE CONTACT
BROKERS FOR PRICING
AND ADDITIONAL
INFORMATION

LOCATION.
commercial real estate



LOCATION.
commercial real estate

f @ in REALTY RESOURCES MEMBER

www.LocationCRE.com

THE INFORMATION IN THIS FLYER HAS BEEN OBTAINED FROM SOURCES BELIEVED RELIABLE. WHILE WE DO NOT DOUBT ITS ACCURACY, WE HAVE NOT VERIFIED IT AND MAKE NO GUARANTEE ABOUT IT. IT IS YOUR RESPONSIBILITY TO INDEPENDENTLY CONFIRM ITS ACCURACY AND COMPLETENESS. ANY PROJECTIONS, OPINIONS, ASSUMPTIONS OR ESTIMATES USED ARE FOR EXAMPLE ONLY AND DO NOT REPRESENT THE CURRENT OR FUTURE PERFORMANCE OF THE PROPERTY. THE VALUE OF THIS TRANSACTION TO YOU DEPENDS ON TAX AND OTHER FACTORS WHICH SHOULD BE EVALUATED BY YOUR TAX, FINANCIAL AND LEGAL ADVISORS. YOU AND YOUR ADVISORS SHOULD CONDUCT A CAREFUL, INDEPENDENT INVESTIGATION OF THE PROPERTY TO DETERMINE TO YOUR SATISFACTION THE SUITABILITY OF THE PROPERTY FOR YOUR NEEDS.