

COMING SOON:



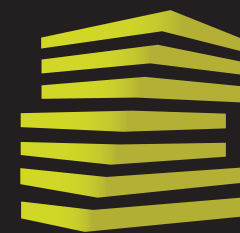
5i



# EMERSON TOWER

8027 FORSYTH BLVD

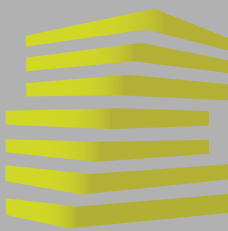
CLAYTON, MO



**LOCATION.**  
commercial real estate

STREET LEVEL RESTAURANT | RETAIL OPPORTUNITY IN THE HEART CLAYTON'S CENTRAL BUSINESS DISTRICT





# EMERSON TOWER

## NEIGHBORHOOD VIBE

KEVIN SHAPIRO

314.818.1550 (OFFICE)

314.283.4691 (MOBILE)

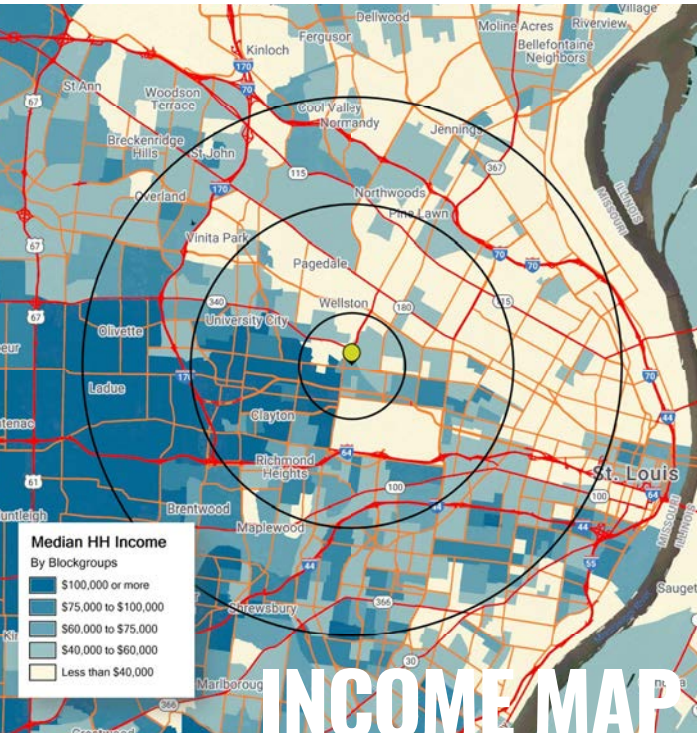
Kevin@LocationCRE.com

BEN WEIS

314.818.1563 (OFFICE)

314.629.6532 (MOBILE)

Ben@LocationCRE.com



# INCOME MAP



### CURRENT YEAR DEMOGRAPHICS

#### POPULATION



**1 MI**  
17,137

**3 MI**  
111,822

**5 MI**  
287,352

#### HOUSEHOLDS



**1 MI**  
8,027

**3 MI**  
50,085

**5 MI**  
131,592

#### AVG HH INCOME



**1 MI**  
\$266,955

**3 MI**  
\$165,914

**5 MI**  
\$132,664

#### EMPLOYEES



**1 MI**  
44,524

**3 MI**  
105,158

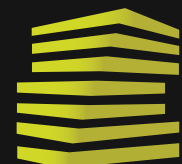
**5 MI**  
205,648

CLAYTON COMBINES A BUSTLING DOWNTOWN WITH QUIET, SECURE RESIDENTIAL NEIGHBORHOODS. IT IS A CHIC SUBURBAN COMMUNITY WITH URBAN FLAIR. JUST WEST OF THE CITY OF ST. LOUIS, CLAYTON IS THE HUB OF METROPOLITAN ST. LOUIS AND THE SEAT OF ST. LOUIS COUNTY. CLAYTON'S CENTRAL LOCATION AND CONVENIENT ACCESS TO SEVERAL INTERSTATES AND MAJOR ARTERIES PLACE IT WITHIN MINUTES OF JUST ABOUT ANYWHERE IN THE REGION. WITH A MIX OF STATELY SINGLE-FAMILY HOMES, CONDOMINIUMS AND MULTIPLE-FAMILY APARTMENTS, CLAYTON'S EXCEPTIONAL RESIDENTIAL NEIGHBORHOODS OFFER A CHOICE OF LIVING STYLES AND PRICE RANGES, AND MOST ARE WITHIN WALKING DISTANCE OF BUSINESS DISTRICTS, OFFICES, RESTAURANTS, GALLERIES AND SPECIALTY BOUTIQUES AND SHOPS.

CLAYTON'S BUSTLING DOWNTOWN IS THE REGION'S PREMIER BUSINESS DISTRICT AND HOME TO FORBES AND FORTUNE 500 HEADQUARTERS AND BRANCH OFFICES. A VARIETY OF COMPANIES ARE HEADQUARTERED IN CLAYTON, SUCH AS ARMSTRONG TEASDALE, CALERES, CENTENE CORPORATION, ENTERPRISE RENT-A-CAR AND DTZ, AMONG OTHERS.

THE CITY'S PUBLIC SCHOOL DISTRICT IS ONE OF THE NATION'S BEST, WITH 95% OF ITS HIGH SCHOOL GRADUATES GOING ON TO COLLEGE. CLAYTON IS ALSO HOME TO SEVERAL PRIVATE INSTITUTIONS, INCLUDING WASHINGTON UNIVERSITY, FONTBONNE UNIVERSITY AND CONCORDIA SEMINARY.

### CLAYTON RESTAURANTS & RETAILERS INCLUDE:



# LOCATION.

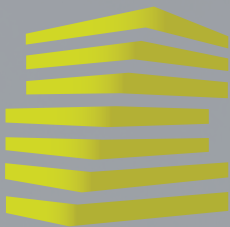
commercial real estate



www.LocationCRE.com

THE INFORMATION IN THIS FLYER HAS BEEN OBTAINED FROM SOURCES BELIEVED RELIABLE. WHILE WE DO NOT DOUBT ITS ACCURACY, WE HAVE NOT VERIFIED IT AND MAKE NO GUARANTEE ABOUT IT. IT IS YOUR RESPONSIBILITY TO INDEPENDENTLY CONFIRM ITS ACCURACY AND COMPLETENESS. ANY PROJECTIONS, OPINIONS, ASSUMPTIONS OR ESTIMATES USED ARE FOR EXAMPLE ONLY AND DO NOT REPRESENT THE CURRENT OR FUTURE PERFORMANCE OF THE PROPERTY. THE VALUE OF THIS TRANSACTION TO YOU DEPENDS ON TAX AND OTHER FACTORS WHICH SHOULD BE EVALUATED BY YOUR TAX, FINANCIAL AND LEGAL ADVISORS. YOU AND YOUR ADVISORS SHOULD CONDUCT A CAREFUL, INDEPENDENT INVESTIGATION OF THE PROPERTY TO DETERMINE TO YOUR SATISFACTION THE SUITABILITY OF THE PROPERTY FOR YOUR NEEDS.





# EMERSON TOWER

---

## PROPERTY DETAILS

KEVIN SHAPIRO

314.818.1550 (OFFICE)

314.283.4691 (MOBILE)

Kevin@LocationCRE.com

BEN WEIS

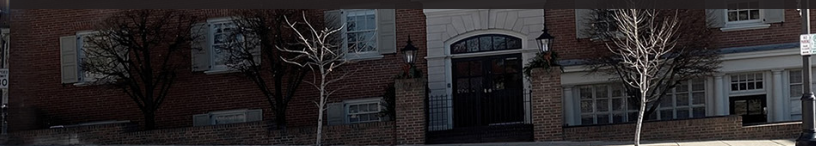
314.818.1563 (OFFICE)

314.629.6532 (MOBILE)

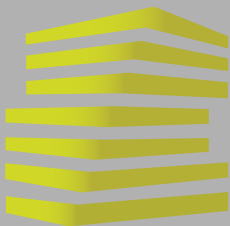
Ben@LocationCRE.com



- **PREMIER RETAIL | RESTAURANT SPACE SITUATED AT THE CORNER OF FORSYTH BLVD AND BRENTWOOD BLVD AT PREMIER INTERSECTION IN CLAYTON, MISSOURI**
- **EMERSON TOWER WILL OFFER AN UNPARALLELED OFFICE EXPERIENCE**
- **PREMIER 102,520 SF CLASS A+ OFFICE TOWER OFFERING A STATE-OF-THE-ART ENVIRONMENT AT A WORLD CLASS ADDRESS**
- **FEATURING 12' WIDE ARCADE WITH OUTDOOR SEATING, TOUCHLESS TECHNOLOGY, FLOOR TO CEILING WINDOWS, 80' LONG HIGH-RES VIDEO WALL**
- **2,368 SF TO 3,364 SF OF RETAIL SPACE READY FOR OCCUPANCY (SUBJECT TO ANY TENANT REQUESTED WORK)**
- **1,300 PARKING SPOT GARAGE PLUS STREET PARKING**
- **CONTACT BROKER FOR PRICING, SHOWINGS, AND ADDITIONAL INFORMATION**







# EMERSON TOWER

## ENTIRE FIRST FLOOR PLAN

KEVIN SHAPIRO

314.818.1550 (OFFICE)

314.283.4691 (MOBILE)

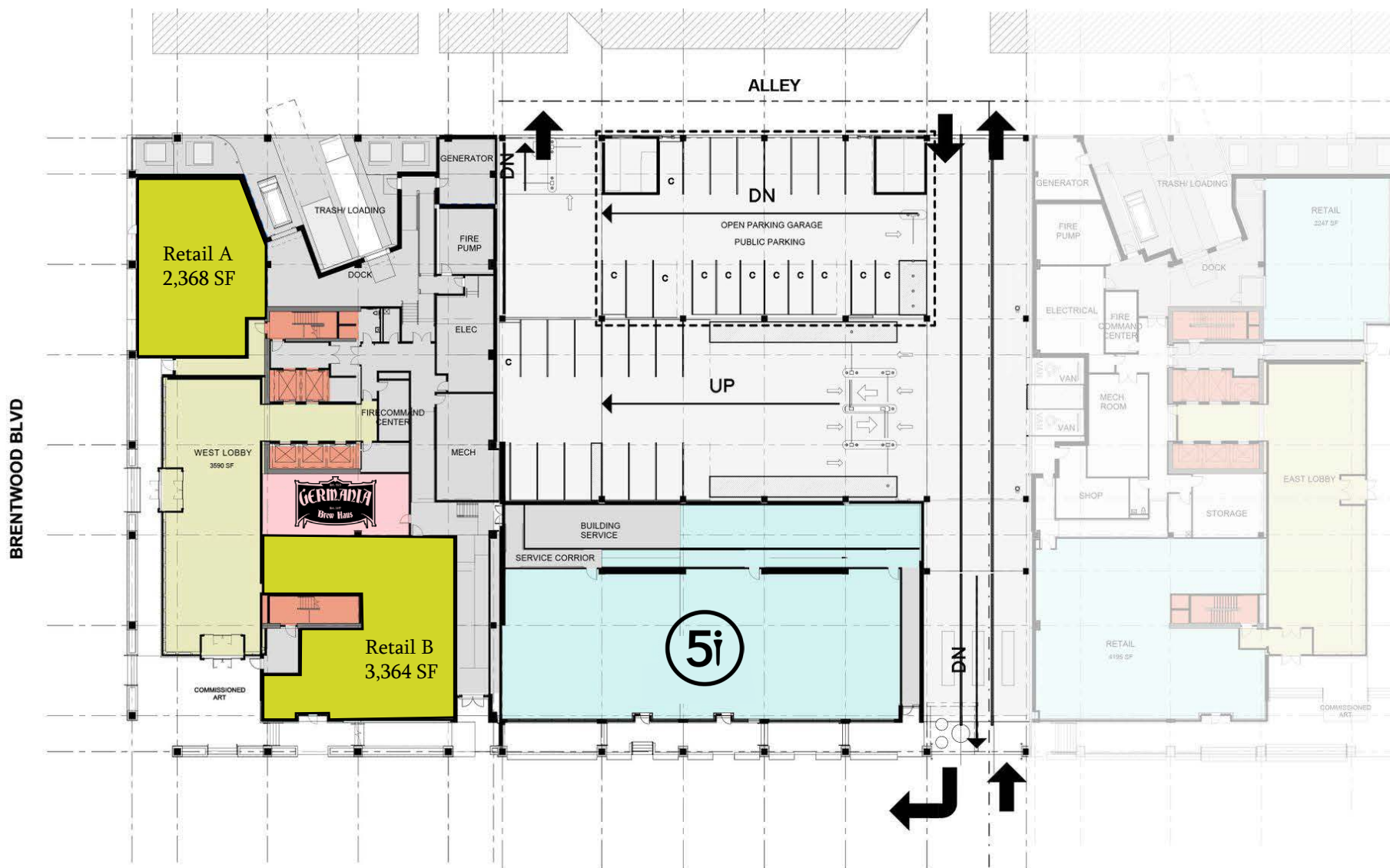
Kevin@LocationCRE.com

BEN WEIS

314.818.1563 (OFFICE)

314.629.6532 (MOBILE)

Ben@LocationCRE.com



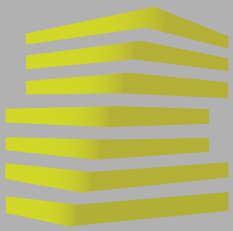
**LOCATION.**  
commercial real estate



REALTY  
RESOURCES  
MEMBER

www.LocationCRE.com

THE INFORMATION IN THIS FLYER HAS BEEN OBTAINED FROM SOURCES BELIEVED RELIABLE. WHILE WE DO NOT DOUBT ITS ACCURACY, WE HAVE NOT VERIFIED IT AND MAKE NO GUARANTEE ABOUT IT. IT IS YOUR RESPONSIBILITY TO INDEPENDENTLY CONFIRM ITS ACCURACY AND COMPLETENESS. ANY PROJECTIONS, OPINIONS, ASSUMPTIONS OR ESTIMATES USED ARE FOR EXAMPLE ONLY AND DO NOT REPRESENT THE CURRENT OR FUTURE PERFORMANCE OF THE PROPERTY. THE VALUE OF THIS TRANSACTION TO YOU DEPENDS ON TAX AND OTHER FACTORS WHICH SHOULD BE EVALUATED BY YOUR TAX, FINANCIAL AND LEGAL ADVISORS. YOU AND YOUR ADVISORS SHOULD CONDUCT A CAREFUL, INDEPENDENT INVESTIGATION OF THE PROPERTY TO DETERMINE TO YOUR SATISFACTION THE SUITABILITY OF THE PROPERTY FOR YOUR NEEDS.



# EMERSON TOWER

## SOUTH ELEVATION

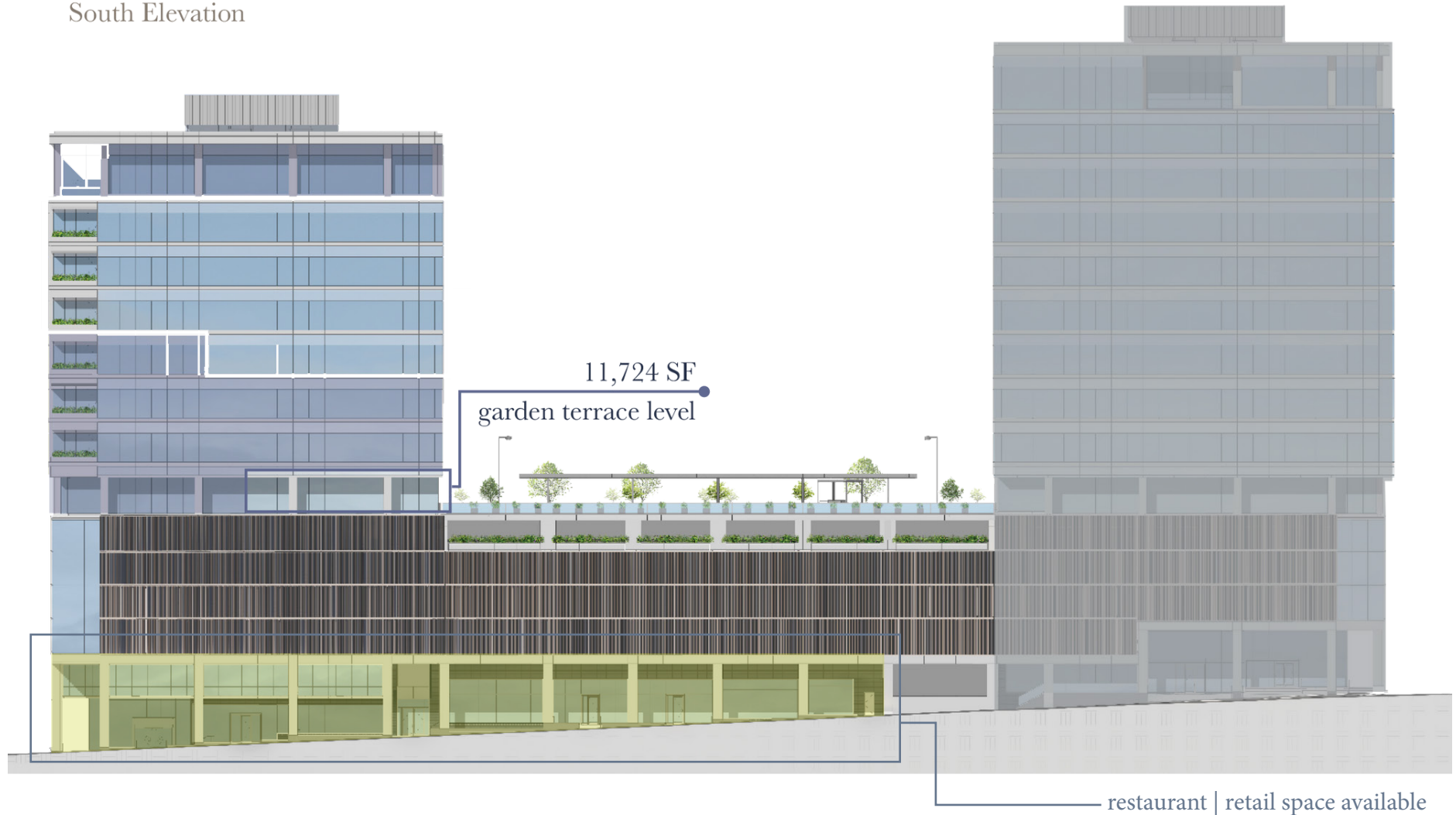
KEVIN SHAPIRO

314.818.1550 (OFFICE)  
314.283.4691 (MOBILE)  
Kevin@LocationCRE.com

BEN WEIS

314.818.1563 (OFFICE)  
314.629.6532 (MOBILE)  
Ben@LocationCRE.com

South Elevation



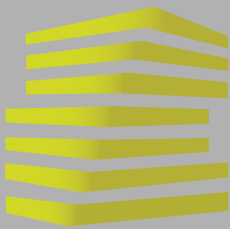
**LOCATION.**  
commercial real estate



[www.LocationCRE.com](http://www.LocationCRE.com)

THE INFORMATION IN THIS FLYER HAS BEEN OBTAINED FROM SOURCES BELIEVED RELIABLE. WHILE WE DO NOT DOUBT ITS ACCURACY, WE HAVE NOT VERIFIED IT AND MAKE NO GUARANTEE ABOUT IT. IT IS YOUR RESPONSIBILITY TO INDEPENDENTLY CONFIRM ITS ACCURACY AND COMPLETENESS. ANY PROJECTIONS, OPINIONS, ASSUMPTIONS OR ESTIMATES USED ARE FOR EXAMPLE ONLY AND DO NOT REPRESENT THE CURRENT OR FUTURE PERFORMANCE OF THE PROPERTY. THE VALUE OF THIS TRANSACTION TO YOU DEPENDS ON TAX AND OTHER FACTORS WHICH SHOULD BE EVALUATED BY YOUR TAX, FINANCIAL AND LEGAL ADVISORS. YOU AND YOUR ADVISORS SHOULD CONDUCT A CAREFUL, INDEPENDENT INVESTIGATION OF THE PROPERTY TO DETERMINE TO YOUR SATISFACTION THE SUITABILITY OF THE PROPERTY FOR YOUR NEEDS.





# EMERSON TOWER

## FROM ABOVE

KEVIN SHAPIRO

314.818.1550 (OFFICE)

314.283.4691 (MOBILE)

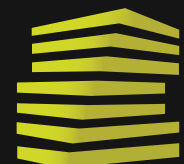
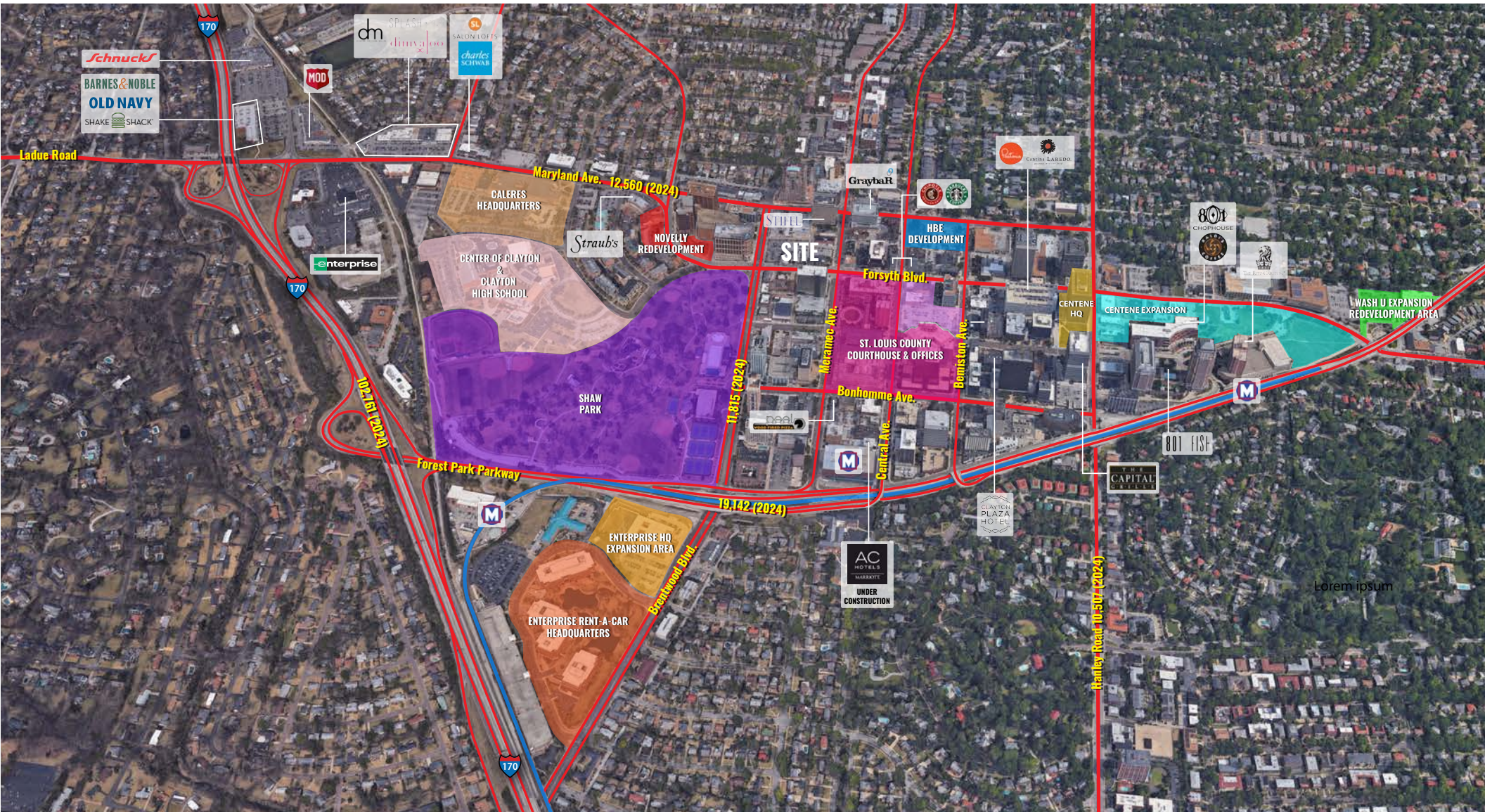
Kevin@LocationCRE.com

BEN WEIS

314.818.1563 (OFFICE)

314.629.6532 (MOBILE)

Ben@LocationCRE.com



# LOCATION.

commercial real estate



REALTY  
RESOURCES  
MEMBER

www.LocationCRE.com

THE INFORMATION IN THIS FLYER HAS BEEN OBTAINED FROM SOURCES BELIEVED RELIABLE. WHILE WE DO NOT DOUBT ITS ACCURACY, WE HAVE NOT VERIFIED IT AND MAKE NO GUARANTEE ABOUT IT. IT IS YOUR RESPONSIBILITY TO INDEPENDENTLY CONFIRM ITS ACCURACY AND COMPLETENESS. ANY PROJECTIONS, OPINIONS, ASSUMPTIONS OR ESTIMATES USED ARE FOR EXAMPLE ONLY AND DO NOT REPRESENT THE CURRENT OR FUTURE PERFORMANCE OF THE PROPERTY. THE VALUE OF THIS TRANSACTION TO YOU DEPENDS ON TAX AND OTHER FACTORS WHICH SHOULD BE EVALUATED BY YOUR TAX, FINANCIAL AND LEGAL ADVISORS. YOU AND YOUR ADVISORS SHOULD CONDUCT A CAREFUL, INDEPENDENT INVESTIGATION OF THE PROPERTY TO DETERMINE TO YOUR SATISFACTION THE SUITABILITY OF THE PROPERTY FOR YOUR NEEDS.