

5,214 SF

20,678 (2025)

CHESTERFIELD AIRPORT FORMER RESTAURANT

17100 CHESTERFIELD AIRPORT ROAD

CHESTERFIELD, MO



Olive Garden

verizon

DOBBS

Panera BREAD

Market by macy's

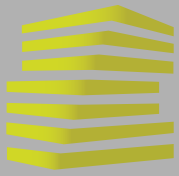
DOLLAR TREE

Michaels

Bath & Body Works

Walmart

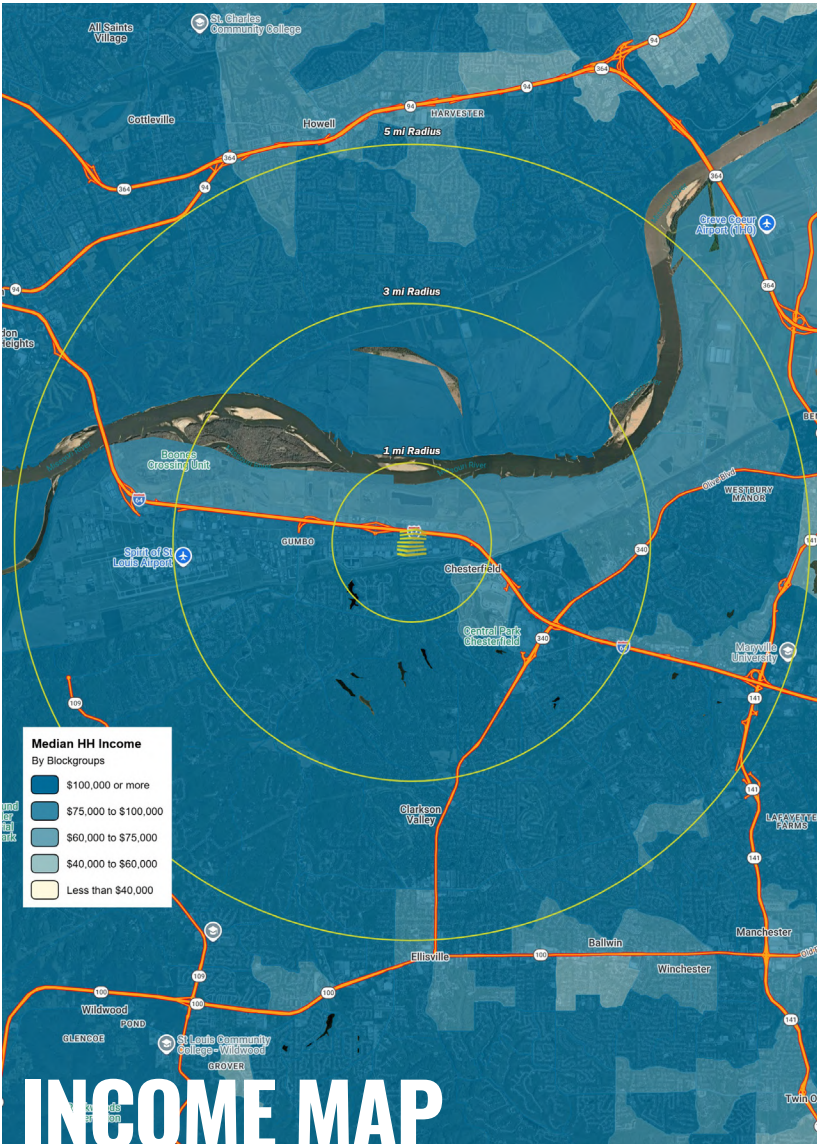
LOCATION. commercial real estate



17100 CHESTERFIELD AIRPORT RD

NEIGHBORHOOD VIBE

BILL SIEMS
 314.818.1566 (OFFICE)
 314.363.8327 (MOBILE)
 Bill@LocationCRE.com



TRADE AREA OVERVIEW

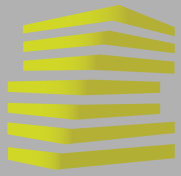
TWENTY-FIVE MINUTES WEST OF DOWNTOWN ST. LOUIS, ALONG THE I-64/40 CORRIDOR, LIES CHESTERFIELD, MISSOURI. WITH A POPULATION OF 47,484, CHESTERFIELD IS THE MOST POPULOUS CITY IN WEST ST. LOUIS COUNTY AND THE 14TH MOST POPULOUS IN THE STATE OF MISSOURI, IS THE 2ND LARGEST CITY IN ST. LOUIS COUNTY, COMPRISING 32 SQUARE MILES. INCORPORATED IN 1988, CHESTERFIELD IS A THRIVING RESIDENTIAL AND BUSINESS COMMUNITY WITH TWO TOP-RATED SCHOOL DISTRICTS, A TOP 50 RATED HOSPITAL, UNLIMITED SHOPPING AND DINING DESTINATIONS ALONG WITH HISTORIC AND CULTURAL ATTRACTIONS.

CHESTERFIELD IS HOME TO MORE THAN 2,000 BUSINESSES WITH OVER 36,000 EMPLOYEES WORKING IN THE COMMUNITY. REINSURANCE GROUP OF AMERICA, DIERBERGS, KELLWOOD AND BROADSTRIFE ARE ALL HEADQUARTERED HERE. THE TOP EMPLOYERS IN CHESTERFIELD INCLUDE ST. LUKE'S HOSPITAL, DELMAR GARDENS ENTERPRISES, MONSANTO, REINSURANCE GROUP OF AMERICA AND DIERBERGS. AROUND THE ST. LOUIS REGION, CHESTERFIELD IS KNOWN AS A SHOPPING AND DINING DESTINATION WITH OVER 150 RESTAURANTS AND HUNDREDS OF RETAIL SHOPS.

DEMOGRAPHICS

	1 mile	3 mile	5 mile
POPULATION	3,096	24,660	98,593
HOUSEHOLDS	1,326	10,781	38,569
EMPLOYEES	23,166	109,225	132,052
MED HH INCOME	\$146,639	\$161,255	\$152,323

AREA RETAIL | RESTAURANTS



17100 CHESTERFIELD AIRPORT RD

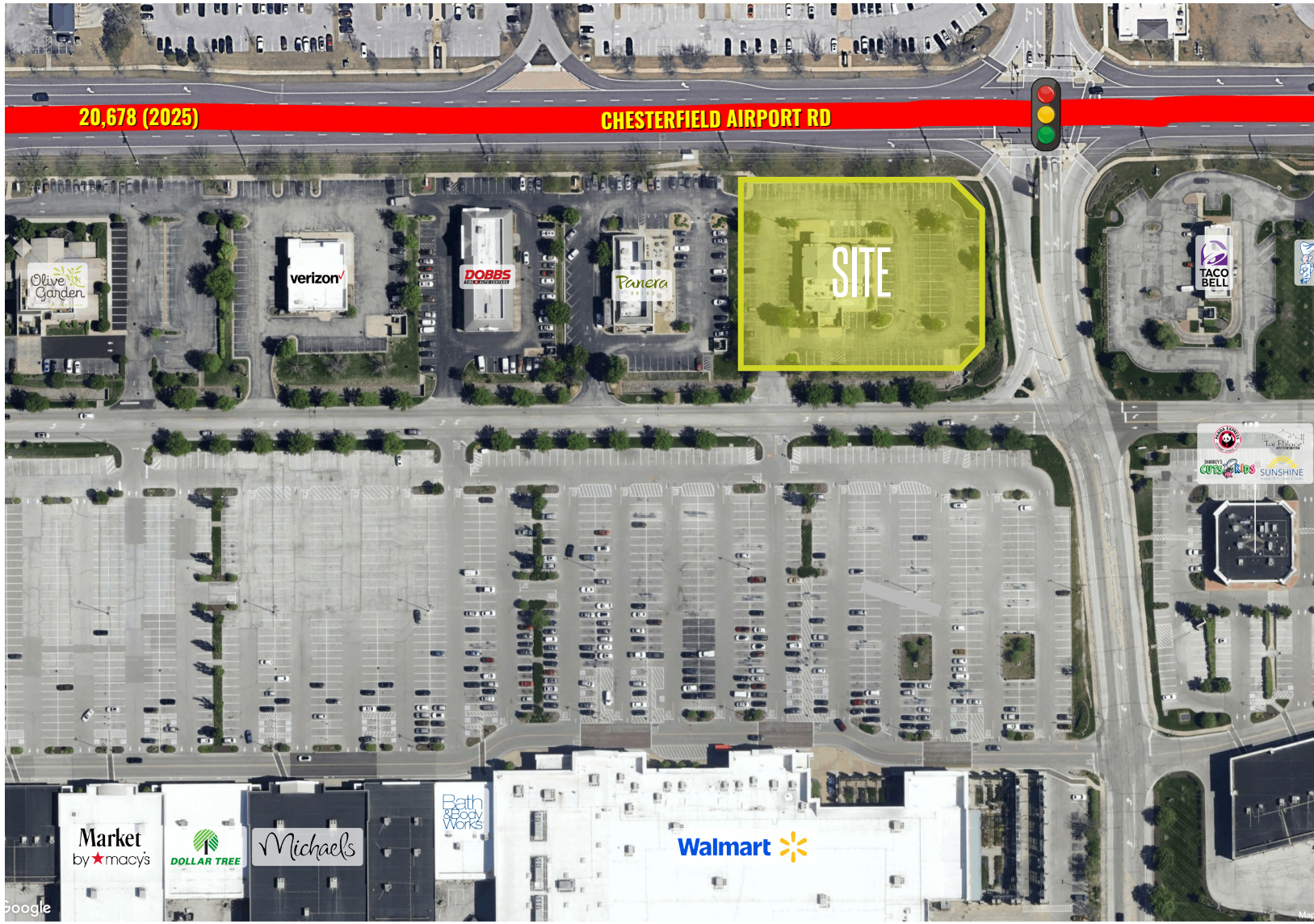
ZOOM AERIAL & DETAILS

BILL SIEMS

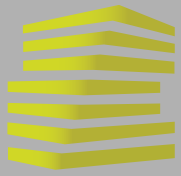
314.818.1566 (OFFICE)

314.363.8327 (MOBILE)

Bill@LocationCRE.com



- **FREESTANDING 5,214 SF BUILDING LOCATED ON PREMIER PAD AT CHESTERFIELD COMMONS SHOPPING CENTER**
- **CHESTERFIELD COMMONS SHOPPING CENTER IS ANCHORED BY WALMART, SAM'S CLUB, & LOWE'S**
- **STRONG CO-TENANCY INCLUDES BEST BUY, ROSS, WORLD MARKET, PETSMART, MICHAELS, & DOLLAR TREE**
- **EXCELLENT ACCESS AND VISIBILITY TO OVER 11,000 VPD ON CHESTERFIELD AIRPORT RD**
- **6.7 MILLION ANNUAL VISITORS AT CHESTERFIELD COMMONS (PER PLACER.AI)**
- **CALL BROKER FOR PRICING**



17100 CHESTERFIELD AIRPORT RD

MARKET AERIAL

BILL SIEMS
314.818.1566 (OFFICE)
314.363.8327 (MOBILE)
Bill@LocationCRE.com

