

# SOUTHWEST PLAZA

S. VETERANS PKWY + WABASH AVE

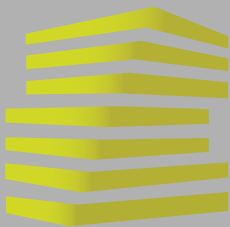
SPRINGFIELD, IL



**LOCATION.**  
commercial real estate







# SOUTHWEST PLAZA

## NEIGHBORHOOD VIBE

JOE LODES

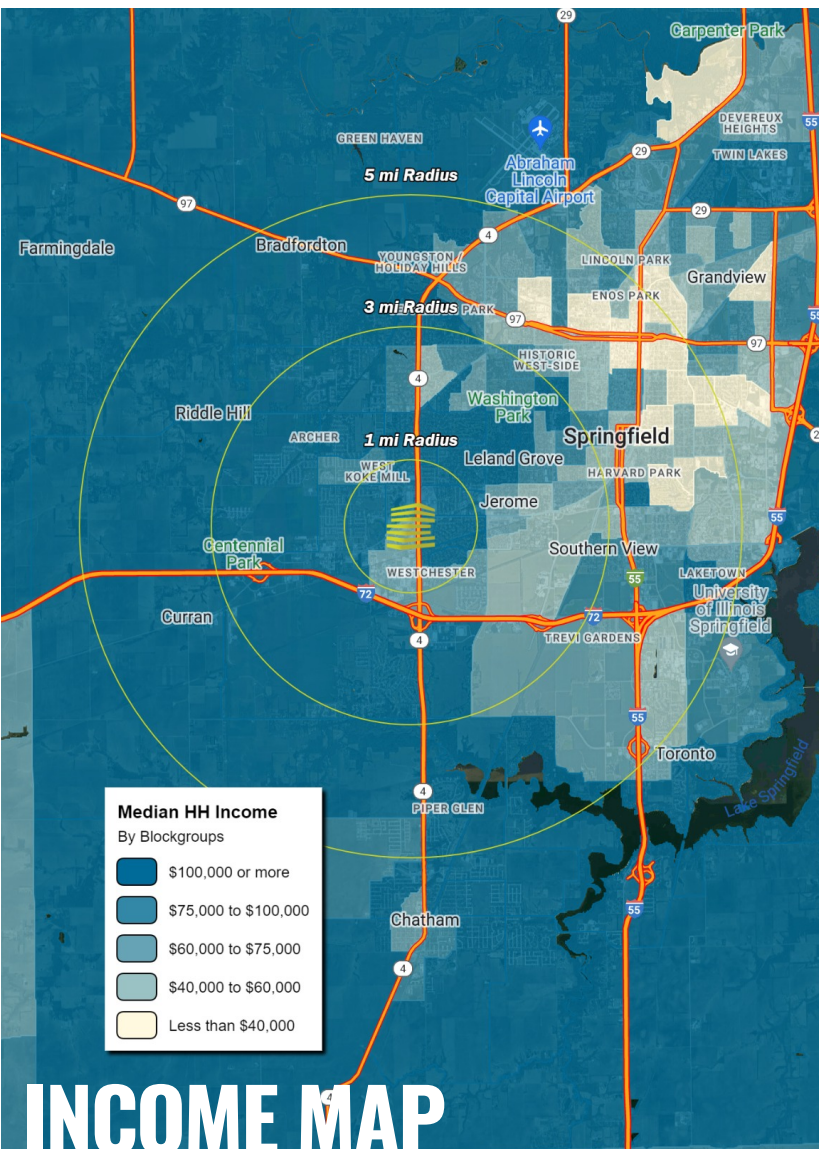
314.818.1564 (DIRECT)  
314.852.8234 (MOBILE)  
Joe@LocationCRE.com

SCOTT BITNEY

314.818.1550 (OFFICE)  
314.276.4673 (MOBILE)  
Scott@LocationCRE.com

ALEX APTER

314.818.1562 (DIRECT)  
314.488.5900 (MOBILE)  
Alex@LocationCRE.com



### TRADE AREA OVERVIEW

Springfield, Illinois is the state capital of Illinois, the county seat of Sangamon County, and the state's 6th most populous city. Springfield, is well known for being the home of Abraham Lincoln, who lived there from 1837-1861. Major tourist attractions include multiple sites connected with Lincoln including his presidential library and museum, his home, and his tomb at Oak Ridge Cemetery. Another popular attraction in Springfield includes the Dana-Thomas House, a home containing the largest collection of site-specific, original Frank Lloyd Wright art glass and furniture. Frank Lloyd Wright also designed the library at the Lawrence Education Center in Springfield. Other popular sites include the Elijah Iles House, the Illinois State Museum, the Illinois State Military Museum, and the Springfield and Central Illinois African-American History Museum, to name a few.

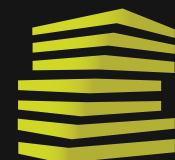
Many of the jobs in Springfield center around state government. The State of Illinois is the city and county's largest employer, employing 17,500 people across Sangamon County. Other major employers include Memorial Medical Center (5,854), St. John's Hospital (3,096), Springfield Public Schools (2,095) and Springfield Clinic LLP (2,039).

The University of Illinois at Springfield (UIS), one of three universities in the U of I system, is located on the southeast side of the city and has an enrollment 4,956 graduate and undergraduate students. Just south of UIS is Lincoln Land Community College, which serves over 13,800 individuals annually. Springfield is also home to the Southern Illinois University School of Medicine - Springfield Campus (285 students).

### DEMOGRAPHICS

	1 mile	3 miles	5 miles
<b>POPULATION</b>	<b>6,047</b>	<b>45,764</b>	<b>97,955</b>
<b>HOUSEHOLDS</b>	<b>2,872</b>	<b>21,769</b>	<b>45,102</b>
<b>EMPLOYEES</b>	<b>11,701</b>	<b>26,868</b>	<b>66,577</b>
<b>MED HH INCOME</b>	<b>\$120,466</b>	<b>\$118,362</b>	<b>\$97,386</b>

### SURROUNDING RETAIL

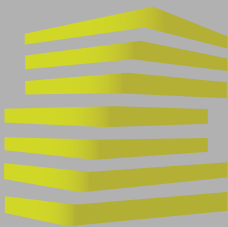


**LOCATION.**  
commercial real estate



[www.LocationCRE.com](http://www.LocationCRE.com)

THE INFORMATION IN THIS FLYER HAS BEEN OBTAINED FROM SOURCES BELIEVED RELIABLE. WHILE WE DO NOT DOUBT ITS ACCURACY, WE HAVE NOT VERIFIED IT AND MAKE NO GUARANTEE ABOUT IT. IT IS YOUR RESPONSIBILITY TO INDEPENDENTLY CONFIRM ITS ACCURACY AND COMPLETENESS. ANY PROJECTIONS, OPINIONS, ASSUMPTIONS OR ESTIMATES USED ARE FOR EXAMPLE ONLY AND DO NOT REPRESENT THE CURRENT OR FUTURE PERFORMANCE OF THE PROPERTY. THE VALUE OF THIS TRANSACTION TO YOU DEPENDS ON TAX AND OTHER FACTORS WHICH SHOULD BE EVALUATED BY YOUR TAX, FINANCIAL AND LEGAL ADVISORS. YOU AND YOUR ADVISORS SHOULD CONDUCT A CAREFUL, INDEPENDENT INVESTIGATION OF THE PROPERTY TO DETERMINE TO YOUR SATISFACTION THE SUITABILITY OF THE PROPERTY FOR YOUR NEEDS.



# SOUTHWEST PLAZA

## SITE PLAN + DETAILS

JOE LODES

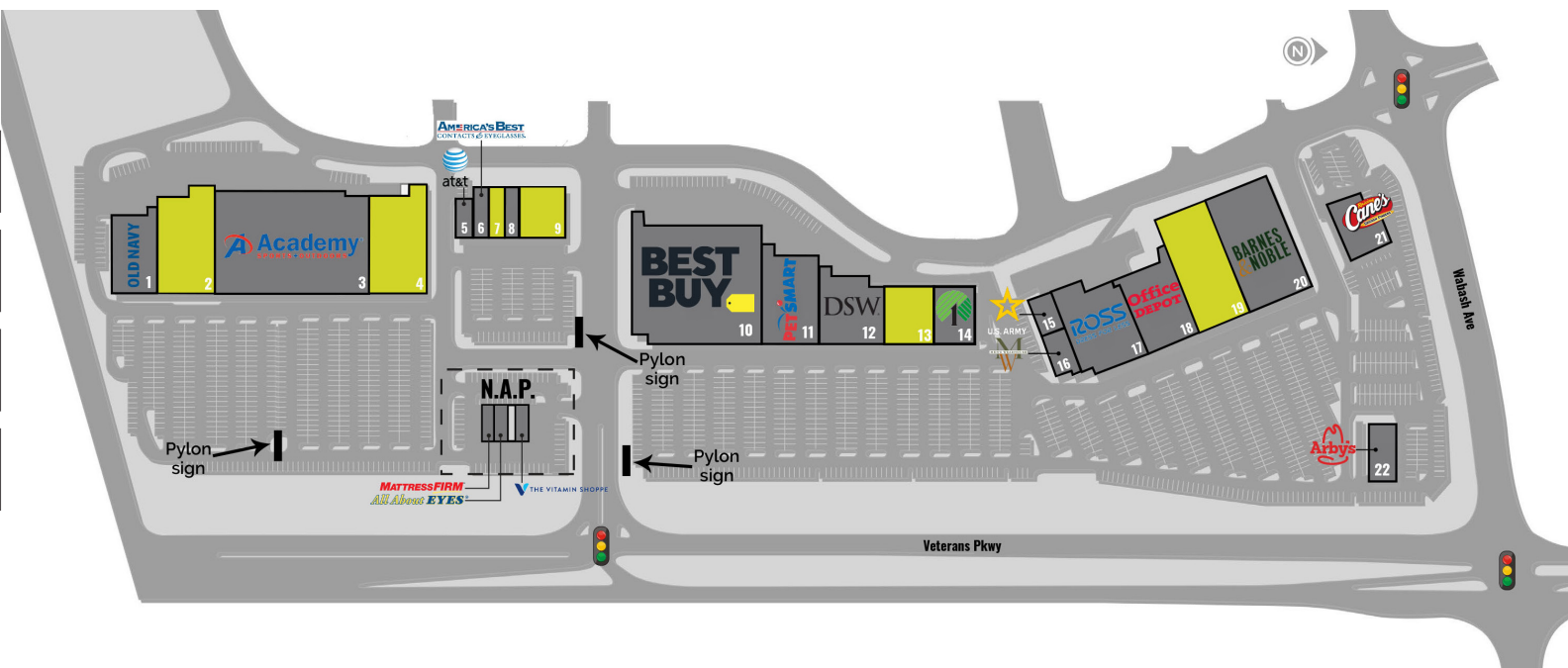
314.818.1564 (DIRECT)  
314.852.8234 (MOBILE)  
Joe@LocationCRE.com

SCOTT BITNEY

314.818.1550 (OFFICE)  
314.276.4673 (MOBILE)  
Scott@LocationCRE.com

ALEX APTER

314.818.1562 (DIRECT)  
314.488.5900 (MOBILE)  
Alex@LocationCRE.com



- 370,000 SF POWER CENTER LOCATED ACROSS FROM WHITE OAKS MALL IN THE SUPER REGIONAL TRADE AREA OF SPRINGFIELD, IL
- JOIN MAJOR RETAIL BRANDS SUCH AS BEST BUY, ROSS DRESS FOR LESS, OLD NAVY, ACADEMY SPORTS, PETSMART, DSW, AND BARNES & NOBLE AMONG OTHERS
- EXCELLENT VISIBILITY TO 29,900 VPD ON VETERANS PARKWAY AND 21,100 VPD WABASH AVE
- CALL BROKER FOR PRICING

TENANT	SF
--------	----

1	OLD NAVY	14,408
2	AVAILABLE	21,944
3	ACADEMY SPORTS	58,000
4	AVAILABLE	25,095
5	AT&T	2,538
6	AMERICA'S BEST	3,000
7	AVAILABLE	2,776
8	LUXE NAIL BAR	3,049

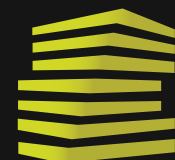
TENANT	SF
--------	----

9	AVAILABLE	9,000
10	BEST BUY	58,000
11	PETSMART	19,822
12	DSW	16,065
13	AVAILABLE	11,273
14	DOLLAR TREE	9,257
15	US ARMY	4,000
16	MENS WEARHOUSE	4,000

TENANT	SF
--------	----

17	ROSS	22,000
18	OFFICE DEPOT	17,320
19	AVAILABLE	18,486
20	BARNES & NOBLE	37,196
21	RAISING CANE'S	
22	ARBY'S	

### 360 VIRTUAL TOURS AVAILABLE SUITES



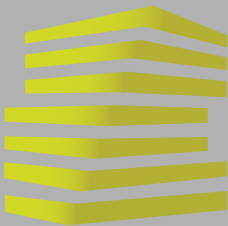
**LOCATION.**  
commercial real estate



www.LocationCRE.com

THE INFORMATION IN THIS FLYER HAS BEEN OBTAINED FROM SOURCES BELIEVED RELIABLE. WHILE WE DO NOT DOUBT ITS ACCURACY, WE HAVE NOT VERIFIED IT AND MAKE NO GUARANTEE ABOUT IT. IT IS YOUR RESPONSIBILITY TO INDEPENDENTLY CONFIRM ITS ACCURACY AND COMPLETENESS. ANY PROJECTIONS, OPINIONS, ASSUMPTIONS OR ESTIMATES USED ARE FOR EXAMPLE ONLY AND DO NOT REPRESENT THE CURRENT OR FUTURE PERFORMANCE OF THE PROPERTY. THE VALUE OF THIS TRANSACTION TO YOU DEPENDS ON TAX AND OTHER FACTORS WHICH SHOULD BE EVALUATED BY YOUR TAX, FINANCIAL AND LEGAL ADVISORS. YOU AND YOUR ADVISORS SHOULD CONDUCT A CAREFUL, INDEPENDENT INVESTIGATION OF THE PROPERTY TO DETERMINE TO YOUR SATISFACTION THE SUITABILITY OF THE PROPERTY FOR YOUR NEEDS.





# SOUTHWEST PLAZA MARKET AERIAL

JOE LODES

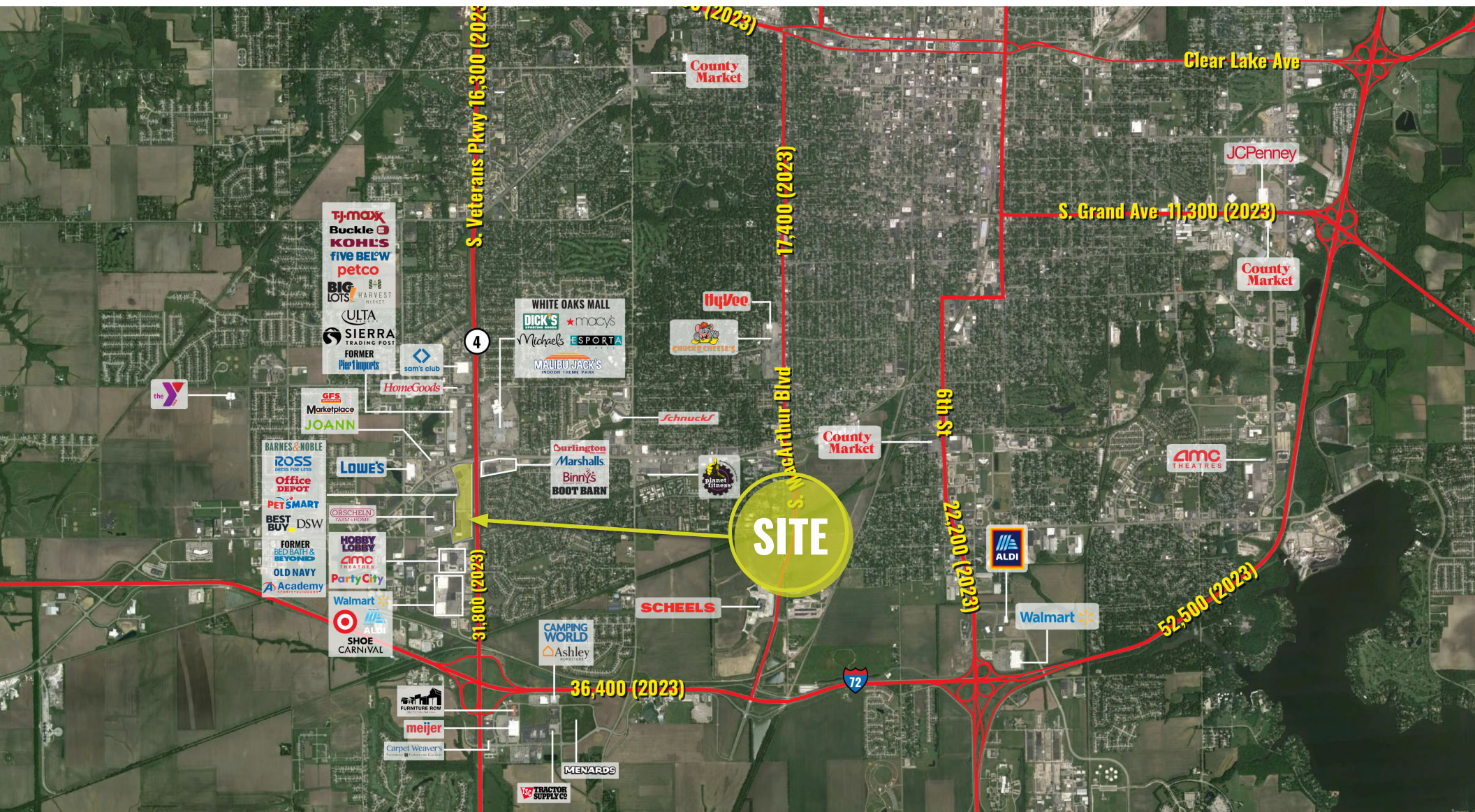
314.818.1564 (DIRECT)  
314.852.8234 (MOBILE)  
Joe@LocationCRE.com

SCOTT BITNEY

314.818.1550 (OFFICE)  
314.276.4673 (MOBILE)  
Scott@LocationCRE.com

ALEX APTER

314.818.1562 (DIRECT)  
314.488.5900 (MOBILE)  
Alex@LocationCRE.com



**LOCATION.**  
commercial real estate

f @ in REALTY RESOURCES MEMBER

www.LocationCRE.com

THE INFORMATION IN THIS FLYER HAS BEEN OBTAINED FROM SOURCES BELIEVED RELIABLE. WHILE WE DO NOT DOUBT ITS ACCURACY, WE HAVE NOT VERIFIED IT AND MAKE NO GUARANTEE ABOUT IT. IT IS YOUR RESPONSIBILITY TO INDEPENDENTLY CONFIRM ITS ACCURACY AND COMPLETENESS. ANY PROJECTIONS, OPINIONS, ASSUMPTIONS OR ESTIMATES USED ARE FOR EXAMPLE ONLY AND DO NOT REPRESENT THE CURRENT OR FUTURE PERFORMANCE OF THE PROPERTY. THE VALUE OF THIS TRANSACTION TO YOU DEPENDS ON TAX AND OTHER FACTORS WHICH SHOULD BE EVALUATED BY YOUR TAX, FINANCIAL AND LEGAL ADVISORS. YOU AND YOUR ADVISORS SHOULD CONDUCT A CAREFUL, INDEPENDENT INVESTIGATION OF THE PROPERTY TO DETERMINE TO YOUR SATISFACTION THE SUITABILITY OF THE PROPERTY FOR YOUR NEEDS.