

2800 SW PLAZA DR

FORMER T-MOBILE SPACE

SPRINGFIELD, IL



LOCATION.
commercial real estate





2800 SOUTH WEST PLAZA DR

NEIGHBORHOOD VIBE

SCOTT BITNEY

314.818.1550 (OFFICE)

314.276.4673 (MOBILE)

Scott@LocationCRE.com

BEN WEIS

314.818.1563 (OFFICE)

314.629.6532 (MOBILE)

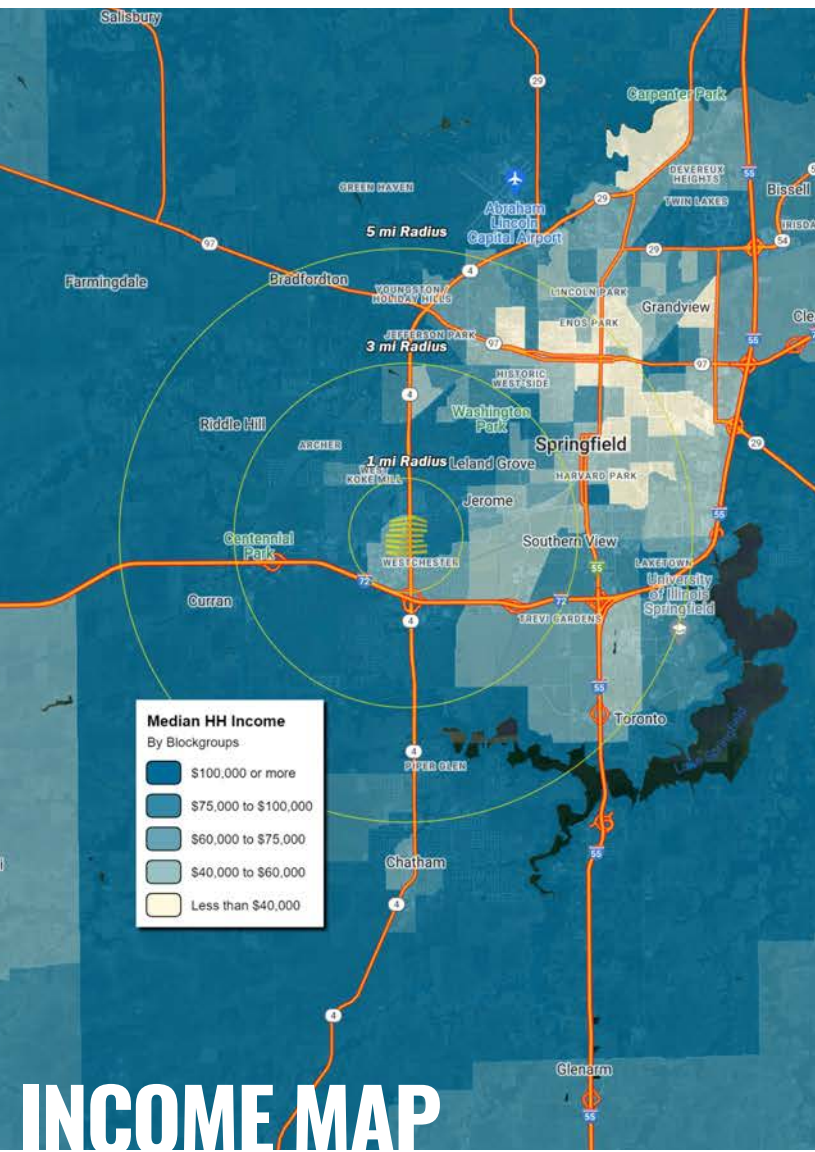
Ben@LocationCRE.com

BILL SIEMS

314.818.1566 (DIRECT)

314.363.8327 (MOBILE)

Bill@LocationCRE.com



TRADE AREA OVERVIEW

Springfield, Illinois is the state capital of Illinois, the county seat of Sangamon County, and the state's 6th most populous city. Springfield, is well known for being the home of Abraham Lincoln, who lived there from 1837-1861. Major tourist attractions include multiple sites connected with Lincoln including his presidential library and museum, his home, and his tomb at Oak Ridge Cemetery. Another popular attraction in Springfield includes the Dana-Thomas House, a home containing the largest collection of site-specific, original Frank Lloyd Wright art glass and furniture. Frank Lloyd Wright also designed the library at the Lawrence Education Center in Springfield. Other popular sites include the Elijah Iles House, the Illinois State Museum, the Illinois State Military Museum, and the Springfield and Central Illinois African-American History Museum, to name a few.

Many of the jobs in Springfield center around state government. The State of Illinois is the city and county's largest employer, employing 17,500 people across Sangamon County. Other major employers include Memorial Medical Center (5,854), St. John's Hospital (3,096), Springfield Public Schools (2,095) and Springfield Clinic LLP (2,039).

The University of Illinois at Springfield (UIS), one of three universities in the U of I system, is located on the southeast side of the city and has an enrollment 4,956 graduate and undergraduate students. Just south of UIS is Lincoln Land Community College, which serves over 13,800 individuals annually. Springfield is also home to the Southern Illinois University School of Medicine - Springfield Campus (285 students).

DEMOGRAPHICS

	1 mile	3 miles	5 miles
POPULATION	1,377	6,975	8,063
HOUSEHOLDS	595	3,000	3,439
EMPLOYEES	3,807	5,344	5,394
MED HH INCOME	\$53,357	\$53,193	\$57,689

SURROUNDING RETAIL



at&t

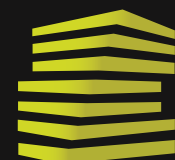
OLD NAVY



HOBBY LOBBY



ROSS
DRESS FOR LESS

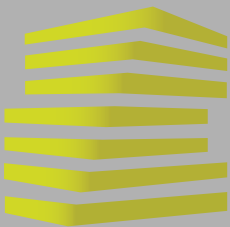


LOCATION.
commercial real estate



www.LocationCRE.com

THE INFORMATION IN THIS FLYER HAS BEEN OBTAINED FROM SOURCES BELIEVED RELIABLE. WHILE WE DO NOT DOUBT ITS ACCURACY, WE HAVE NOT VERIFIED IT AND MAKE NO GUARANTEE ABOUT IT. IT IS YOUR RESPONSIBILITY TO INDEPENDENTLY CONFIRM ITS ACCURACY AND COMPLETENESS. ANY PROJECTIONS, OPINIONS, ASSUMPTIONS OR ESTIMATES USED ARE FOR EXAMPLE ONLY AND DO NOT REPRESENT THE CURRENT OR FUTURE PERFORMANCE OF THE PROPERTY. THE VALUE OF THIS TRANSACTION TO YOU DEPENDS ON TAX AND OTHER FACTORS WHICH SHOULD BE EVALUATED BY YOUR TAX, FINANCIAL AND LEGAL ADVISORS. YOU AND YOUR ADVISORS SHOULD CONDUCT A CAREFUL, INDEPENDENT INVESTIGATION OF THE PROPERTY TO DETERMINE TO YOUR SATISFACTION THE SUITABILITY OF THE PROPERTY FOR YOUR NEEDS.



2800 SOUTH WEST PLAZA DR

SITE PLAN

SCOTT BITNEY

314.818.1550 (OFFICE)

314.276.4673 (MOBILE)

Scott@LocationCRE.com

BEN WEIS

314.818.1563 (OFFICE)

314.629.6532 (MOBILE)

Ben@LocationCRE.com

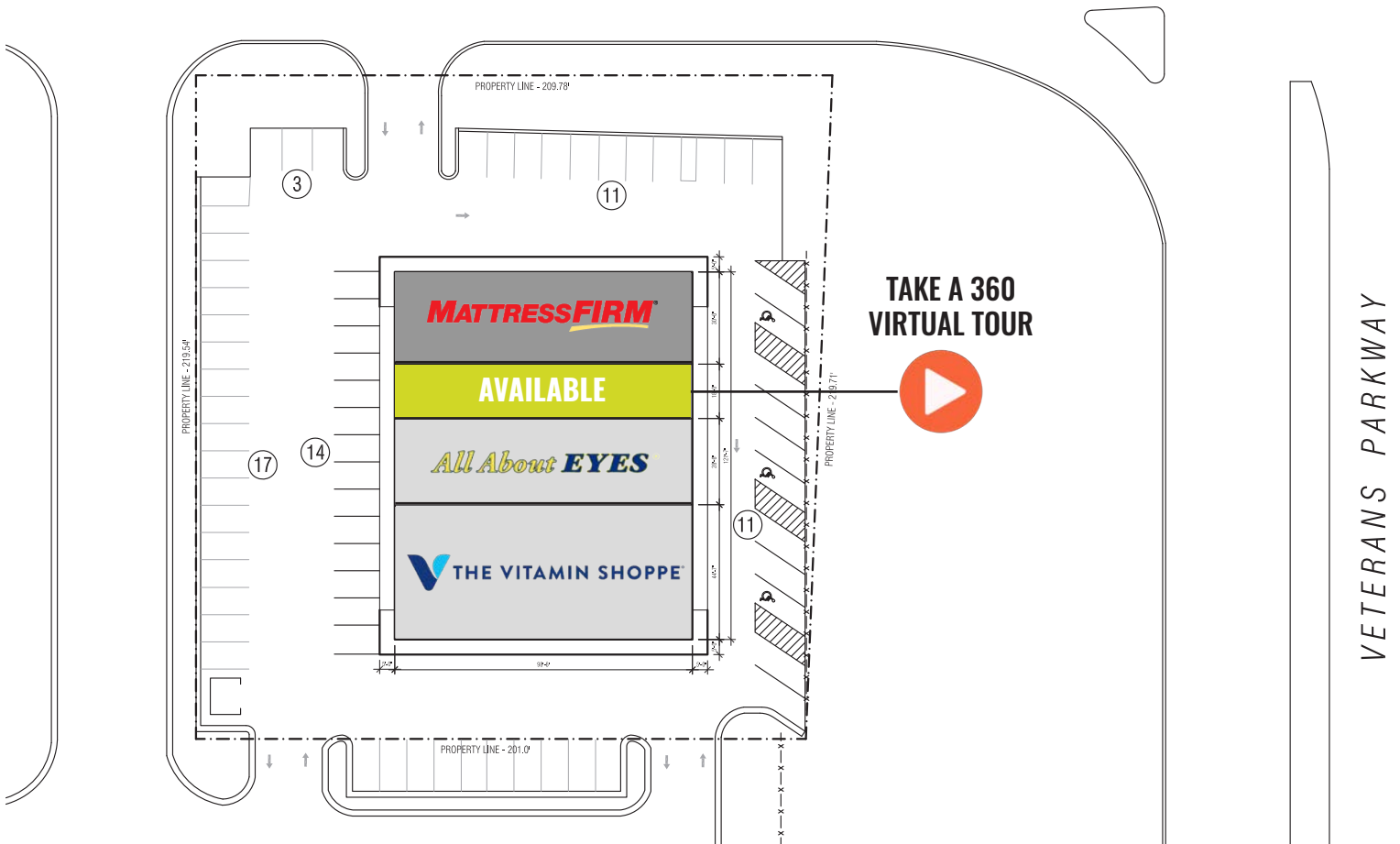
BILL SIEMS

314.818.1566 (DIRECT)

314.363.8327 (MOBILE)

Bill@LocationCRE.com

SOUTHWEST PLAZA DRIVE



- 1,773 SF AVAILABLE FOR LEASE
- FORMER T-MOBILE
- EXCELLENT VISIBILITY TO OVER 30,000 VPD WITH ACCESS TO LIGHTED INTERSECTION
- CONTACT BROKER FOR PRICING

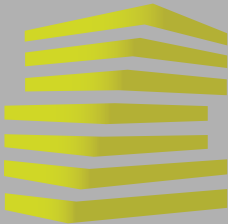


LOCATION.
commercial real estate



www.LocationCRE.com

THE INFORMATION IN THIS FLYER HAS BEEN OBTAINED FROM SOURCES BELIEVED RELIABLE. WHILE WE DO NOT DOUBT ITS ACCURACY, WE HAVE NOT VERIFIED IT AND MAKE NO GUARANTEE ABOUT IT. IT IS YOUR RESPONSIBILITY TO INDEPENDENTLY CONFIRM ITS ACCURACY AND COMPLETENESS. ANY PROJECTIONS, OPINIONS, ASSUMPTIONS OR ESTIMATES USED ARE FOR EXAMPLE ONLY AND DO NOT REPRESENT THE CURRENT OR FUTURE PERFORMANCE OF THE PROPERTY. THE VALUE OF THIS TRANSACTION TO YOU DEPENDS ON TAX AND OTHER FACTORS WHICH SHOULD BE EVALUATED BY YOUR TAX, FINANCIAL AND LEGAL ADVISORS. YOU AND YOUR ADVISORS SHOULD CONDUCT A CAREFUL, INDEPENDENT INVESTIGATION OF THE PROPERTY TO DETERMINE TO YOUR SATISFACTION THE SUITABILITY OF THE PROPERTY FOR YOUR NEEDS.



2800 SOUTH WEST PLAZA DR

ZOOM AERIAL

SCOTT BITNEY
314.818.1550 (OFFICE)
314.276.4673 (MOBILE)
Scott@LocationCRE.com

BEN WEIS
314.818.1563 (OFFICE)
314.629.6532 (MOBILE)
Ben@LocationCRE.com

BILL SIEMS
314.818.1566 (DIRECT)
314.363.8327 (MOBILE)
Bill@LocationCRE.com



1,773 SF
AVAILABLE

WHITE OAKS
MALL

29,900 (2021)

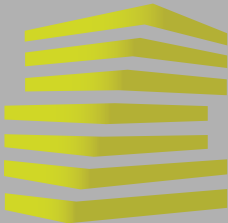


LOCATION.
commercial real estate



www.LocationCRE.com

THE INFORMATION IN THIS FLYER HAS BEEN OBTAINED FROM SOURCES BELIEVED RELIABLE. WHILE WE DO NOT DOUBT ITS ACCURACY, WE HAVE NOT VERIFIED IT AND MAKE NO GUARANTEE ABOUT IT. IT IS YOUR RESPONSIBILITY TO INDEPENDENTLY CONFIRM ITS ACCURACY AND COMPLETENESS. ANY PROJECTIONS, OPINIONS, ASSUMPTIONS OR ESTIMATES USED ARE FOR EXAMPLE ONLY AND DO NOT REPRESENT THE CURRENT OR FUTURE PERFORMANCE OF THE PROPERTY. THE VALUE OF THIS TRANSACTION TO YOU DEPENDS ON TAX AND OTHER FACTORS WHICH SHOULD BE EVALUATED BY YOUR TAX, FINANCIAL AND LEGAL ADVISORS. YOU AND YOUR ADVISORS SHOULD CONDUCT A CAREFUL, INDEPENDENT INVESTIGATION OF THE PROPERTY TO DETERMINE TO YOUR SATISFACTION THE SUITABILITY OF THE PROPERTY FOR YOUR NEEDS.



2800 SOUTH WEST PLAZA DR

MARKET AERIAL

SCOTT BITNEY

314.818.1550 (OFFICE)

314.276.4673 (MOBILE)

Scott@LocationCRE.com

BEN WEIS

314.818.1563 (OFFICE)

314.629.6532 (MOBILE)

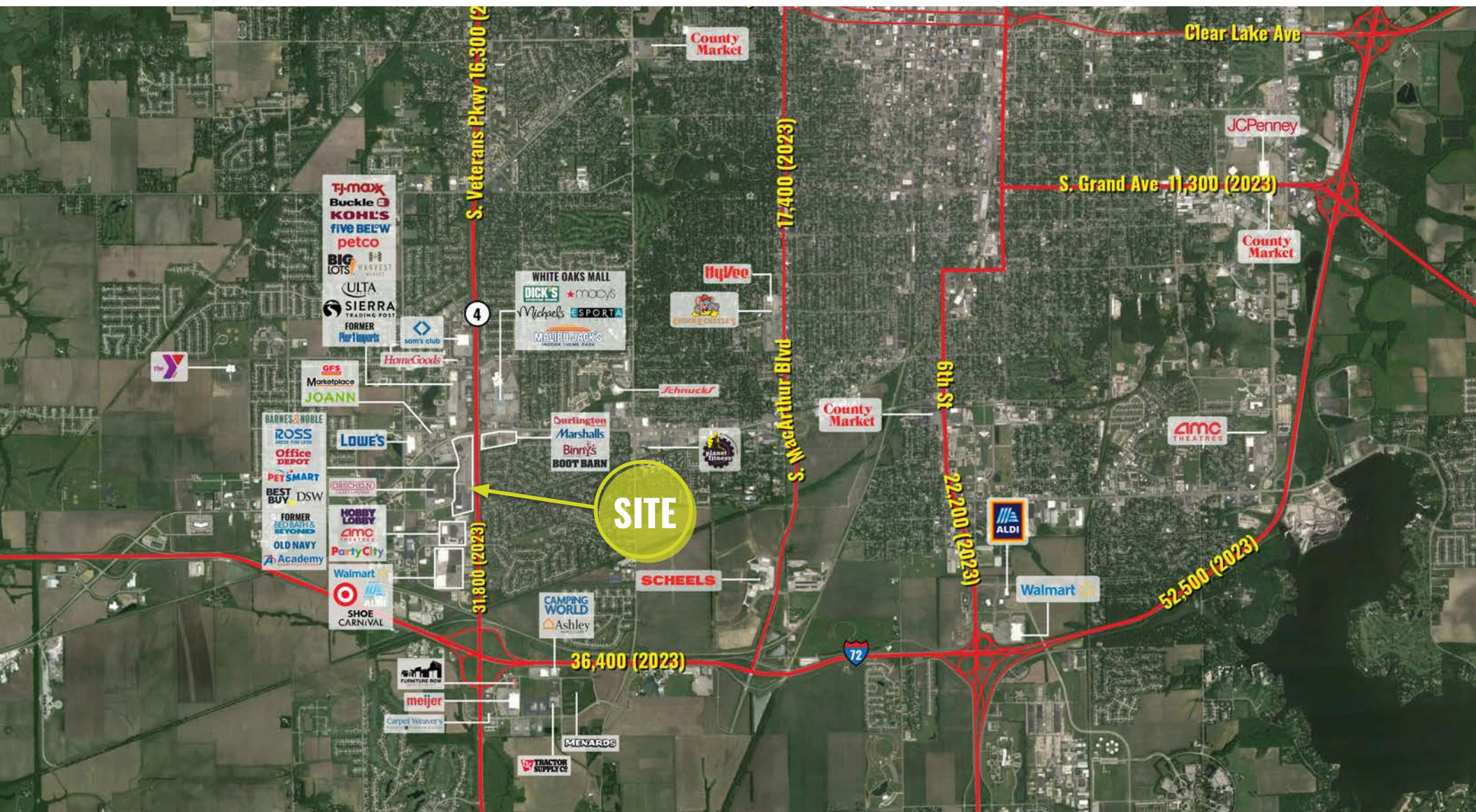
Ben@LocationCRE.com

BILL SIEMS

314.818.1566 (DIRECT)

314.363.8327 (MOBILE)

Bill@LocationCRE.com



LOCATION.
commercial real estate

f @ in REALTY RESOURCES MEMBER

www.LocationCRE.com

THE INFORMATION IN THIS FLYER HAS BEEN OBTAINED FROM SOURCES BELIEVED RELIABLE. WHILE WE DO NOT DOUBT ITS ACCURACY, WE HAVE NOT VERIFIED IT AND MAKE NO GUARANTEE ABOUT IT. IT IS YOUR RESPONSIBILITY TO INDEPENDENTLY CONFIRM ITS ACCURACY AND COMPLETENESS. ANY PROJECTIONS, OPINIONS, ASSUMPTIONS OR ESTIMATES USED ARE FOR EXAMPLE ONLY AND DO NOT REPRESENT THE CURRENT OR FUTURE PERFORMANCE OF THE PROPERTY. THE VALUE OF THIS TRANSACTION TO YOU DEPENDS ON TAX AND OTHER FACTORS WHICH SHOULD BE EVALUATED BY YOUR TAX, FINANCIAL AND LEGAL ADVISORS. YOU AND YOUR ADVISORS SHOULD CONDUCT A CAREFUL, INDEPENDENT INVESTIGATION OF THE PROPERTY TO DETERMINE TO YOUR SATISFACTION THE SUITABILITY OF THE PROPERTY FOR YOUR NEEDS.