

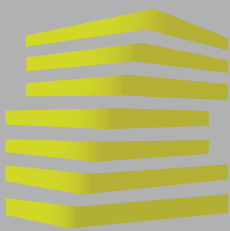
8,000 SF BUILDING SUBLEASE OPPORTUNITY

1 0 2 2 C A M P J A C K S O N

CAHOKIA, IL



LOCATION.
commercial real estate

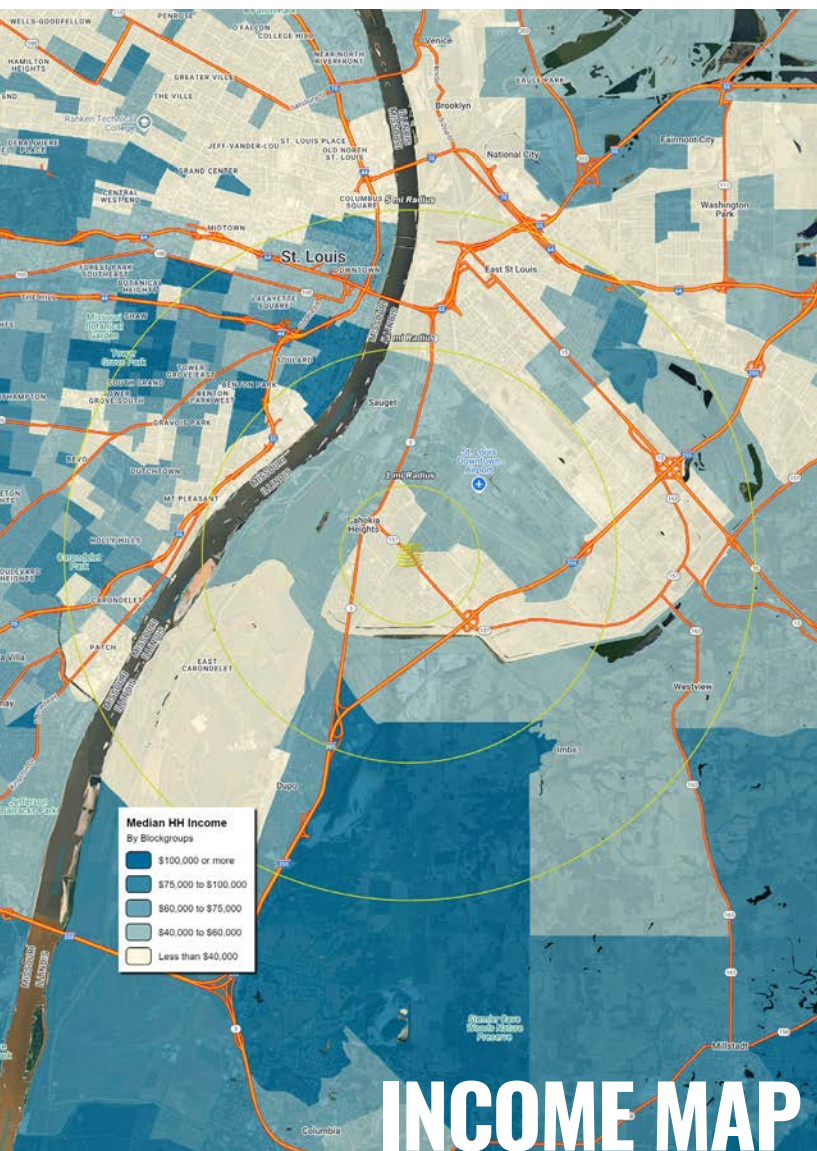


1022 CAMP JACKSON

AREA INFORMATION

TONY MOON
314.818.1567 (OFFICE)
314.560.0781 (MOBILE)
Tony@LocationCRE.com

SCOTT BITNEY
314.818.1500 (OFFICE)
314.276.4673 (MOBILE)
Scott@LocationCRE.com



TRADE AREA OVERVIEW

Cahokia, IL is a historic city located in St. Clair County, Illinois. It is situated across the Mississippi River from St. Louis, Missouri, and is known for its rich archaeological heritage and its association with the ancient Native American civilization of the same name.

Cahokia was once the site of a pre-Columbian Native American city, which is now a UNESCO World Heritage site known as Cahokia Mounds State Historic Site. This ancient city was the largest and most influential urban settlement in the Mississippian culture, which thrived between the years 1000 and 1350 CE. The Cahokia civilization was an advanced society that encompassed a vast area, including parts of present-day Illinois, Missouri, and other neighboring states.

In the modern era, Cahokia, IL has become a focal point for studying and preserving the remnants of the ancient civilization. The Cahokia Mounds State Historic Site covers more than 2,200 acres (890 hectares) and features over 70 mounds, as well as a reconstructed Woodhenge, which is believed to have been an astronomical observatory.

Visitors to Cahokia Mounds can explore the site's interpretive center, which provides exhibits, artifacts, and information about the history and culture of the Cahokia civilization. The site offers guided tours, educational programs, and special events to help visitors learn about the fascinating ancient city and its significance.

Today, Cahokia, IL is a residential community that surrounds the historic site. It also serves as a gateway for tourists and researchers interested in exploring the remains of the ancient city and gaining insights into the cultural heritage of the Mississippian civilization.

DEMOGRAPHICS

	1 mile	3 mile	5 mile
POPULATION	7,509	18,611	131,158
HOUSEHOLDS	2,689	7,076	60,730
EMPLOYEES	1,610	11,698	87,238
MED HH INCOME	\$32,719	\$38,108	\$55,529

AREA RETAIL | RESTAURANTS

Schnucks

DOLLAR GENERAL

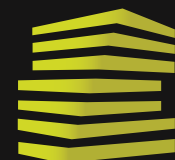


Walgreens

CITITRENDS



KFC

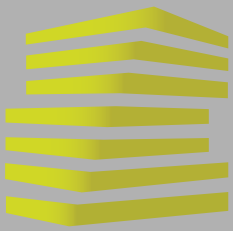


LOCATION.
commercial real estate



www.LocationCRE.com

THE INFORMATION IN THIS FLYER HAS BEEN OBTAINED FROM SOURCES BELIEVED RELIABLE. WHILE WE DO NOT DOUBT ITS ACCURACY, WE HAVE NOT VERIFIED IT AND MAKE NO GUARANTEE ABOUT IT. IT IS YOUR RESPONSIBILITY TO INDEPENDENTLY CONFIRM ITS ACCURACY AND COMPLETENESS. ANY PROJECTIONS, OPINIONS, ASSUMPTIONS OR ESTIMATES USED ARE FOR EXAMPLE ONLY AND DO NOT REPRESENT THE CURRENT OR FUTURE PERFORMANCE OF THE PROPERTY. THE VALUE OF THIS TRANSACTION TO YOU DEPENDS ON TAX AND OTHER FACTORS WHICH SHOULD BE EVALUATED BY YOUR TAX, FINANCIAL AND LEGAL ADVISORS. YOU AND YOUR ADVISORS SHOULD CONDUCT A CAREFUL, INDEPENDENT INVESTIGATION OF THE PROPERTY TO DETERMINE TO YOUR SATISFACTION THE SUITABILITY OF THE PROPERTY FOR YOUR NEEDS.



1022 CAMP JACKSON

AERIAL + DETAILS

TONY MOON

314.818.1567 (OFFICE)

314.560.0781 (MOBILE)

Tony@LocationCRE.com

SCOTT BITNEY

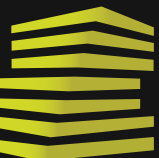
314.818.1500 (OFFICE)

314.276.4673 (MOBILE)

Scott@LocationCRE.com



- 8,000 SF SUBLEASE OPPORTUNITY IN CAHOKIA, IL
- LEASE EXPIRES 12/31/26
- PYLON SIGNAGE AVAILABLE
- PLEASE CONTACT BROKER FOR MORE DETAILS

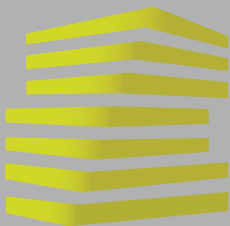


LOCATION.
commercial real estate



www.LocationCRE.com

THE INFORMATION IN THIS FLYER HAS BEEN OBTAINED FROM SOURCES BELIEVED RELIABLE. WHILE WE DO NOT DOUBT ITS ACCURACY, WE HAVE NOT VERIFIED IT AND MAKE NO GUARANTEE ABOUT IT. IT IS YOUR RESPONSIBILITY TO INDEPENDENTLY CONFIRM ITS ACCURACY AND COMPLETENESS. ANY PROJECTIONS, OPINIONS, ASSUMPTIONS OR ESTIMATES USED ARE FOR EXAMPLE ONLY AND DO NOT REPRESENT THE CURRENT OR FUTURE PERFORMANCE OF THE PROPERTY. THE VALUE OF THIS TRANSACTION TO YOU DEPENDS ON TAX AND OTHER FACTORS WHICH SHOULD BE EVALUATED BY YOUR TAX, FINANCIAL AND LEGAL ADVISORS. YOU AND YOUR ADVISORS SHOULD CONDUCT A CAREFUL, INDEPENDENT INVESTIGATION OF THE PROPERTY TO DETERMINE TO YOUR SATISFACTION THE SUITABILITY OF THE PROPERTY FOR YOUR NEEDS.



1022 CAMP JACKSON

PHOTOS

TONY MOON

314.818.1567 (OFFICE)

314.560.0781 (MOBILE)

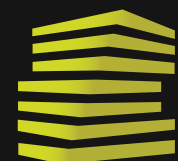
Tony@LocationCRE.com

SCOTT BITNEY

314.818.1500 (OFFICE)

314.276.4673 (MOBILE)

Scott@LocationCRE.com



LOCATION.
commercial real estate

f @ in REALTY RESOURCES MEMBER

www.LocationCRE.com

THE INFORMATION IN THIS FLYER HAS BEEN OBTAINED FROM SOURCES BELIEVED RELIABLE. WHILE WE DO NOT DOUBT ITS ACCURACY, WE HAVE NOT VERIFIED IT AND MAKE NO GUARANTEE ABOUT IT. IT IS YOUR RESPONSIBILITY TO INDEPENDENTLY CONFIRM ITS ACCURACY AND COMPLETENESS. ANY PROJECTIONS, OPINIONS, ASSUMPTIONS OR ESTIMATES USED ARE FOR EXAMPLE ONLY AND DO NOT REPRESENT THE CURRENT OR FUTURE PERFORMANCE OF THE PROPERTY. THE VALUE OF THIS TRANSACTION TO YOU DEPENDS ON TAX AND OTHER FACTORS WHICH SHOULD BE EVALUATED BY YOUR TAX, FINANCIAL AND LEGAL ADVISORS. YOU AND YOUR ADVISORS SHOULD CONDUCT A CAREFUL, INDEPENDENT INVESTIGATION OF THE PROPERTY TO DETERMINE TO YOUR SATISFACTION THE SUITABILITY OF THE PROPERTY FOR YOUR NEEDS.