

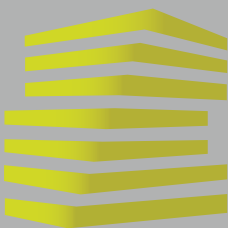


LOCATION.
commercial real estate

GREEN MOUNT COMMONS

BELLEVILLE, IL





GREEN MOUNT COMMONS

NEIGHBORHOOD VIBE

ALEX APTER

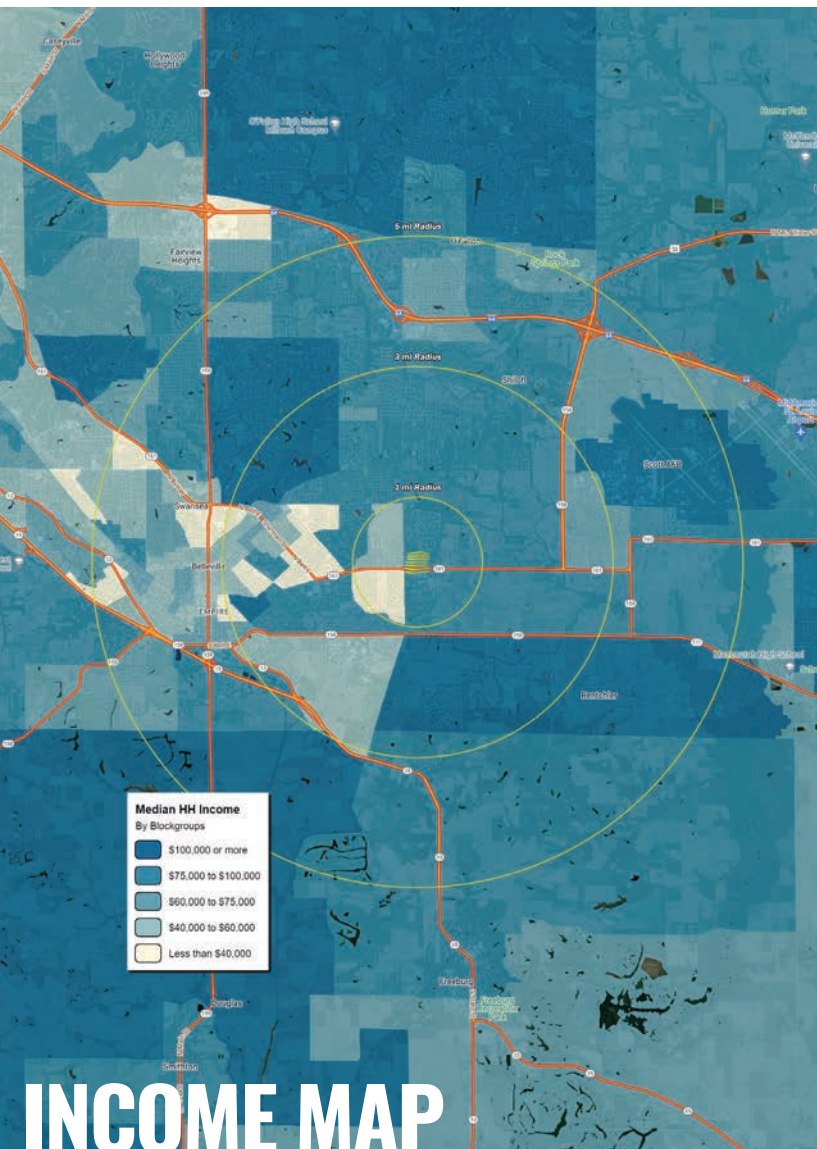
314.818.1562 (OFFICE)
314.488.5900 (MOBILE)
Alex@LocationCRE.com

JOE LODES

314.818.1564 (OFFICE)
314.852.8234 (MOBILE)
Joe@LocationCRE.com

SCOTT BITNEY

314.818.1550 (OFFICE)
314.276.4673 (MOBILE)
Scott@LocationCRE.com



TRADE AREA OVERVIEW

Belleville is a city in St. Clair County, Illinois, United States, co-extensive with Belleville Township. Belleville is the eighth-most populated Illinois city outside of the Chicago Metropolitan Area and the most populated city south of Springfield in the state of Illinois. It is the county seat of St. Clair County, and the seat of the Roman Catholic Diocese of Belleville and the National Shrine of Our Lady of the Snows.

Belleville is the most populated city in the Metro-East region of the St. Louis Metropolitan Area and in Southern Illinois. Due to its proximity to Scott Air Force Base, the population receives a boost from military and federal civilian personnel, defense contractors, and military retirees. Lindenwood University and Southwestern Illinois College have campuses located in Belleville. The city's top employers include Scott Air Force Base, Memorial Hospital, and Southwestern Illinois College.

DEMOGRAPHICS

	1 mile	3 miles	5 miles
POPULATION	4,258	36,815	89,176
HOUSEHOLDS	1,725	15,093	37,019
EMPLOYEES	2,701	8,466	31,201
MED HH INCOME	\$65,419	\$79,564	\$76,944

AREA RETAIL | RESTAURANTS

Walmart *

LOWE'S

GameStop

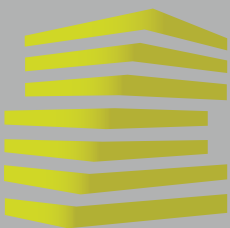
Chick-fil-A

Wendy's

CATO

Schnucks

CLUB FITNESS



GREEN MOUNT COMMONS

SITE PLAN

ALEX APTER

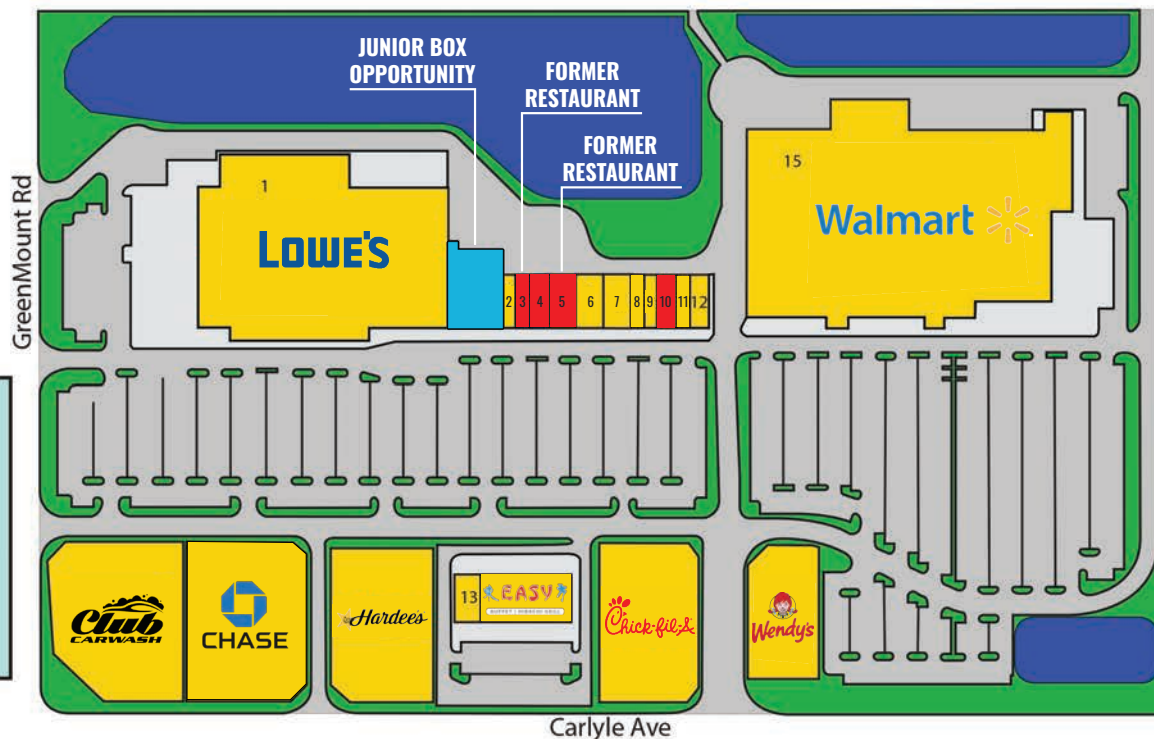
314.818.1562 (OFFICE)
314.488.5900 (MOBILE)
Alex@LocationCRE.com

JOE LODES

314.818.1564 (OFFICE)
314.852.8234 (MOBILE)
Joe@LocationCRE.com

SCOTT BITNEY

314.818.1550 (OFFICE)
314.276.4673 (MOBILE)
Scott@LocationCRE.com



Suite	Tenant	SF
1	Lowe's Home Improvement	139,410
2	Clarkson Eyecare	2,000
3	AVAILABLE (Former Restaurant)	2,600
4	AVAILABLE	5,500
5	AVAILABLE (Former Restaurant)	4,000
6	CATO	4,000
7	King's Beauty	6,000
8	H&R Block	1,500
9	Sammy Nails	1,500
10	AVAILABLE	2,000
11	Vapor World	1,500
12	AT&T	2,000
13	Jimmy John's	1,799
14	Easy Buffet & Hibachi Grill	6,130
15	Walmart	203,819

- 2,000 SF - 9,500 SF AVAILABLE
- ANCHORED BY WALMART SUPERCENTER AND LOWE'S
- LOCATED AT THE HIGHLY TRAFFICKED CORNER OF CARLYLE AVENUE AND GREEN MOUNT ROAD
- JUNIOR BOX AND SMALL SHOP OPPORTUNITIES
- ACROSS FROM SOUTHWESTERN ILLINOIS COLLEGE AND CLOSE TO METROLINK
- CALL BROKER FOR PRICING

360 VIRTUAL TOURS AVAILABLE SUITES



SUITE 4



SUITE 5



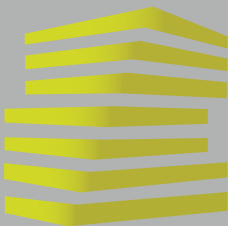
LOCATION.
commercial real estate



REALTY
RESOURCES
MEMBER

www.LocationCRE.com

THE INFORMATION IN THIS FLYER HAS BEEN OBTAINED FROM SOURCES BELIEVED RELIABLE. WHILE WE DO NOT DOUBT ITS ACCURACY, WE HAVE NOT VERIFIED IT AND MAKE NO GUARANTEE ABOUT IT. IT IS YOUR RESPONSIBILITY TO INDEPENDENTLY CONFIRM ITS ACCURACY AND COMPLETENESS. ANY PROJECTIONS, OPINIONS, ASSUMPTIONS OR ESTIMATES USED ARE FOR EXAMPLE ONLY AND DO NOT REPRESENT THE CURRENT OR FUTURE PERFORMANCE OF THE PROPERTY. THE VALUE OF THIS TRANSACTION TO YOU DEPENDS ON TAX AND OTHER FACTORS WHICH SHOULD BE EVALUATED BY YOUR TAX, FINANCIAL AND LEGAL ADVISORS. YOU AND YOUR ADVISORS SHOULD CONDUCT A CAREFUL, INDEPENDENT INVESTIGATION OF THE PROPERTY TO DETERMINE TO YOUR SATISFACTION THE SUITABILITY OF THE PROPERTY FOR YOUR NEEDS.



GREEN MOUNT COMMONS

ZOOM AERIAL + PHOTOS

ALEX APTER

314.818.1562 (OFFICE)

314.488.5900 (MOBILE)

Alex@LocationCRE.com

JOE LODES

314.818.1564 (OFFICE)

314.852.8234 (MOBILE)

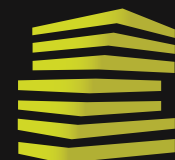
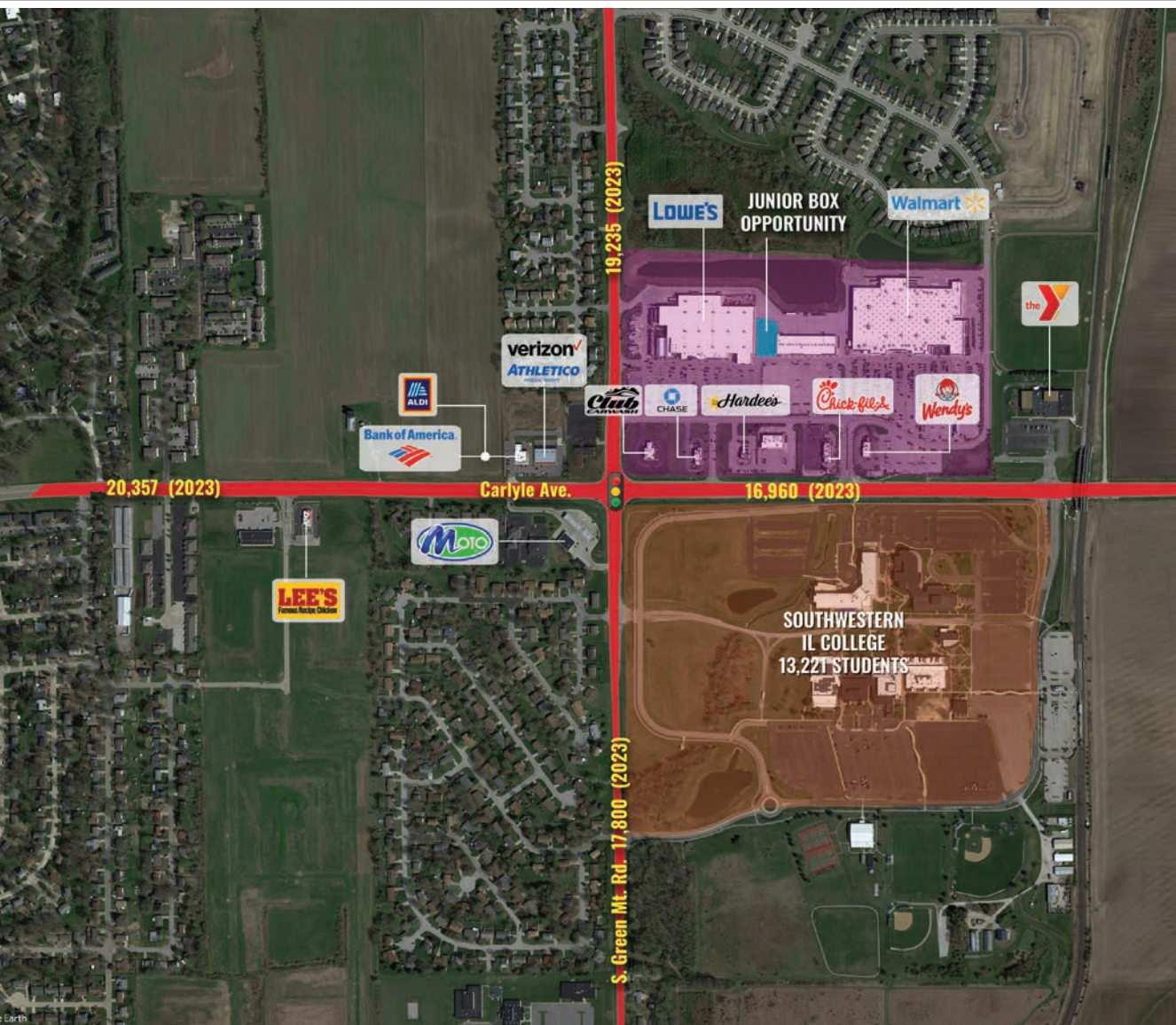
Joe@LocationCRE.com

SCOTT BITNEY

314.818.1550 (OFFICE)

314.276.4673 (MOBILE)

Scott@LocationCRE.com



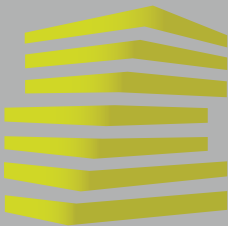
LOCATION.
commercial real estate



REALTY
RESOURCES
MEMBER

www.LocationCRE.com

THE INFORMATION IN THIS FLYER HAS BEEN OBTAINED FROM SOURCES BELIEVED RELIABLE. WHILE WE DO NOT DOUBT ITS ACCURACY, WE HAVE NOT VERIFIED IT AND MAKE NO GUARANTEE ABOUT IT. IT IS YOUR RESPONSIBILITY TO INDEPENDENTLY CONFIRM ITS ACCURACY AND COMPLETENESS. ANY PROJECTIONS, OPINIONS, ASSUMPTIONS OR ESTIMATES USED ARE FOR EXAMPLE ONLY AND DO NOT REPRESENT THE CURRENT OR FUTURE PERFORMANCE OF THE PROPERTY. THE VALUE OF THIS TRANSACTION TO YOU DEPENDS ON TAX AND OTHER FACTORS WHICH SHOULD BE EVALUATED BY YOUR TAX, FINANCIAL AND LEGAL ADVISORS. YOU AND YOUR ADVISORS SHOULD CONDUCT A CAREFUL, INDEPENDENT INVESTIGATION OF THE PROPERTY TO DETERMINE TO YOUR SATISFACTION THE SUITABILITY OF THE PROPERTY FOR YOUR NEEDS.



GREEN MOUNT COMMONS

MARKET AERIAL

ALEX APTER

314.818.1562 (OFFICE)

314.488.5900 (MOBILE)

Alex@LocationCRE.com

JOE LODES

314.818.1564 (OFFICE)

314.852.8234 (MOBILE)

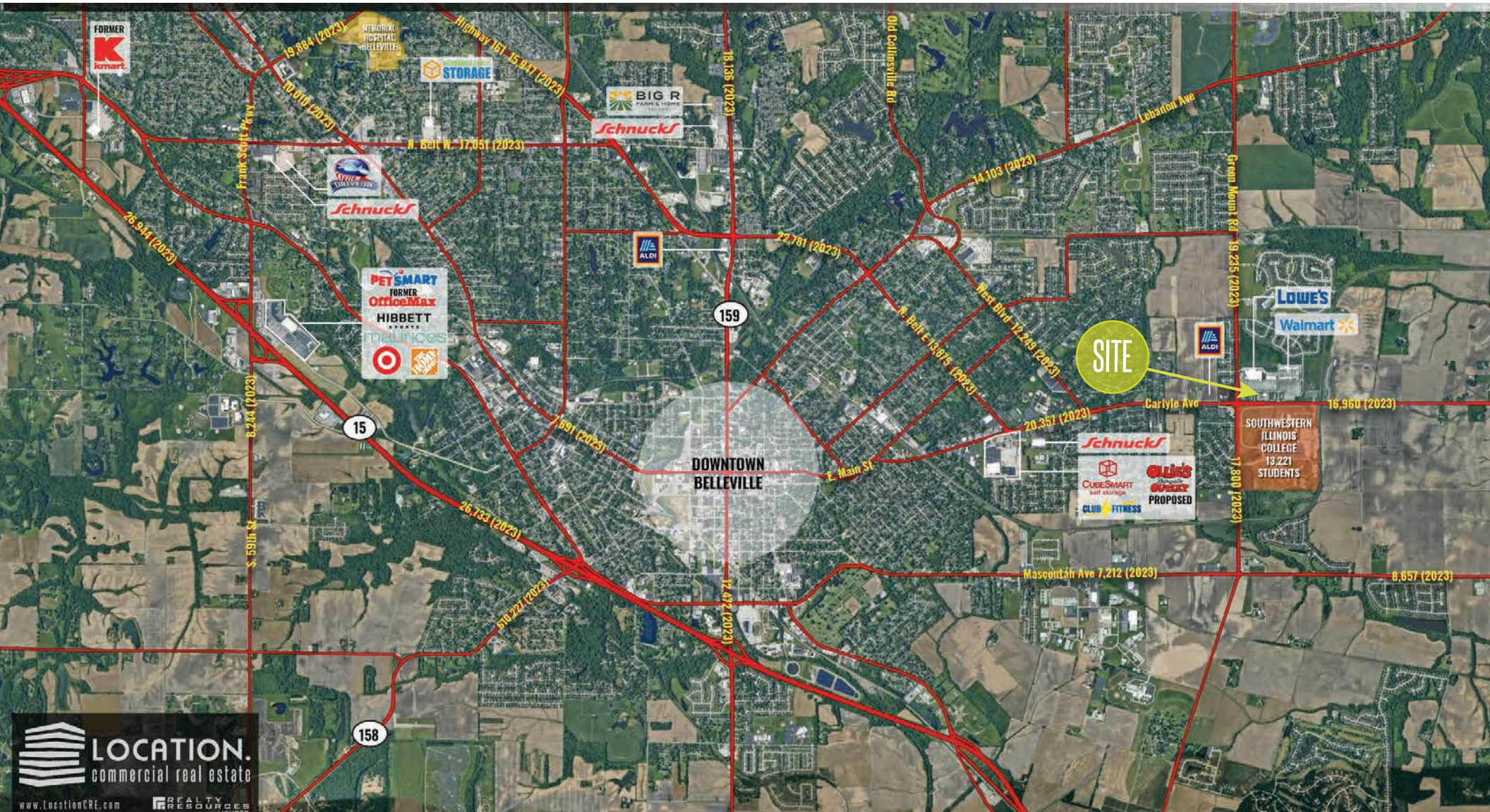
Joe@LocationCRE.com

SCOTT BITNEY

314.818.1550 (OFFICE)

314.276.4673 (MOBILE)

Scott@LocationCRE.com



www.LocationCRE.com

THE INFORMATION IN THIS FLYER HAS BEEN OBTAINED FROM SOURCES BELIEVED RELIABLE. WHILE WE DO NOT DOUBT ITS ACCURACY, WE HAVE NOT VERIFIED IT AND MAKE NO GUARANTEE ABOUT IT. IT IS YOUR RESPONSIBILITY TO INDEPENDENTLY CONFIRM ITS ACCURACY AND COMPLETENESS. ANY PROJECTIONS, OPINIONS, ASSUMPTIONS OR ESTIMATES USED ARE FOR EXAMPLE ONLY AND DO NOT REPRESENT THE CURRENT OR FUTURE PERFORMANCE OF THE PROPERTY. THE VALUE OF THIS TRANSACTION TO YOU DEPENDS ON TAX AND OTHER FACTORS WHICH SHOULD BE EVALUATED BY YOUR TAX, FINANCIAL AND LEGAL ADVISORS. YOU AND YOUR ADVISORS SHOULD CONDUCT A CAREFUL, INDEPENDENT INVESTIGATION OF THE PROPERTY TO DETERMINE TO YOUR SATISFACTION THE SUITABILITY OF THE PROPERTY FOR YOUR NEEDS.